



February 22, 2019

Chicago Jobs Council

About Us



Our Mission:

Chicago Jobs Council moves people out of poverty through employment using on-the-ground expertise, advocacy, and capacity-building.

Our Vision:

Our vision is that all people – regardless of where they start or where they've been – can access employment as a pathway out of poverty.



Frontline Focus Training Institute



FFTI delivers **trainings and resources** to help **frontline workforce professionals** build their capacity to better meet the employment needs of disadvantaged job seekers, low-income workers and employers.

www.cjc.net/frontline-focus



Upcoming Courses



- **FINANCIAL COACHING FOR PEOPLE W/ DISABILITIES – FEBRUARY 26**
- **PERFORMANCE MANAGEMENT – FEBRUARY 27**
- **GROUP FACILITATION – MARCH 6**
- **DELIVERING TRAUMA-INFORMED CARE – MARCH 8**

www.cjc.net/frontline-focus

Overview
of the
Family-
Centered
Coaching
Toolkit



www.familycenteredcoaching.org

Photo credit: Used by permission from WK Kellogg Foundation

WHAT IS FCC?



Places the family in the driver's seat. Parents are the experts.



Integrates lessons from trauma-informed care, behavioral economics, and executive function skills.



Focuses on the whole family.



Takes in account different approaches at different stages of change.



FCC Values & Principles

FCC Values

- Full-Family Focus
- Family-Led
- Respect
- Strength-Based
- Racial Equity and Inclusion

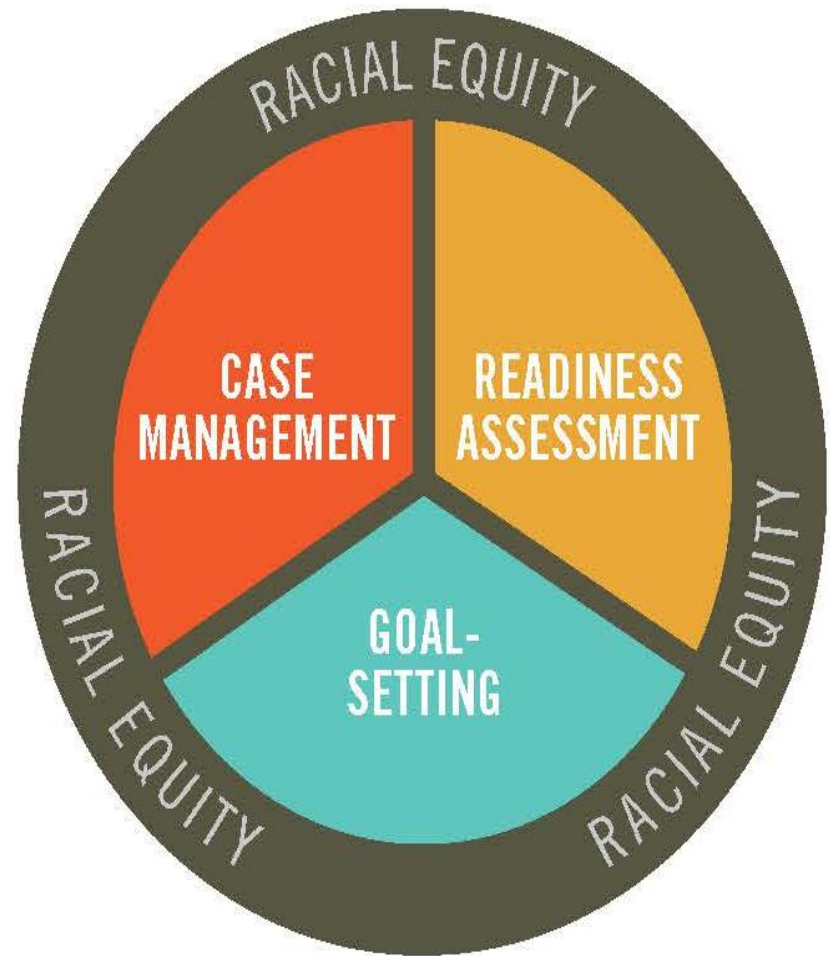
FCC Operational Principles

- Fluidity of Approach
- Transparent
- Peer Based
- Choice
- Responsiveness

Assessing What Role Coaches Can Play

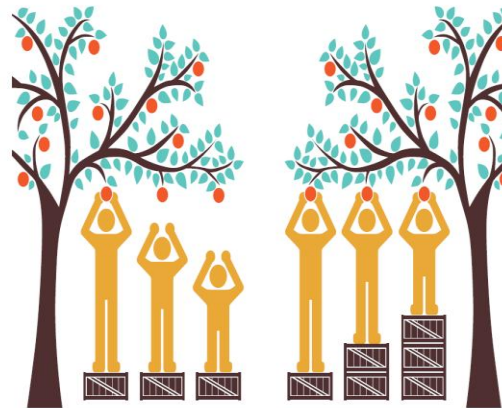
Using a variety of approaches when working with parents, ultimately moving toward a goal-setting approach that supports changes the family wants.

THE APPROACH WHEEL



RACIAL EQUITY THROUGH COACHING

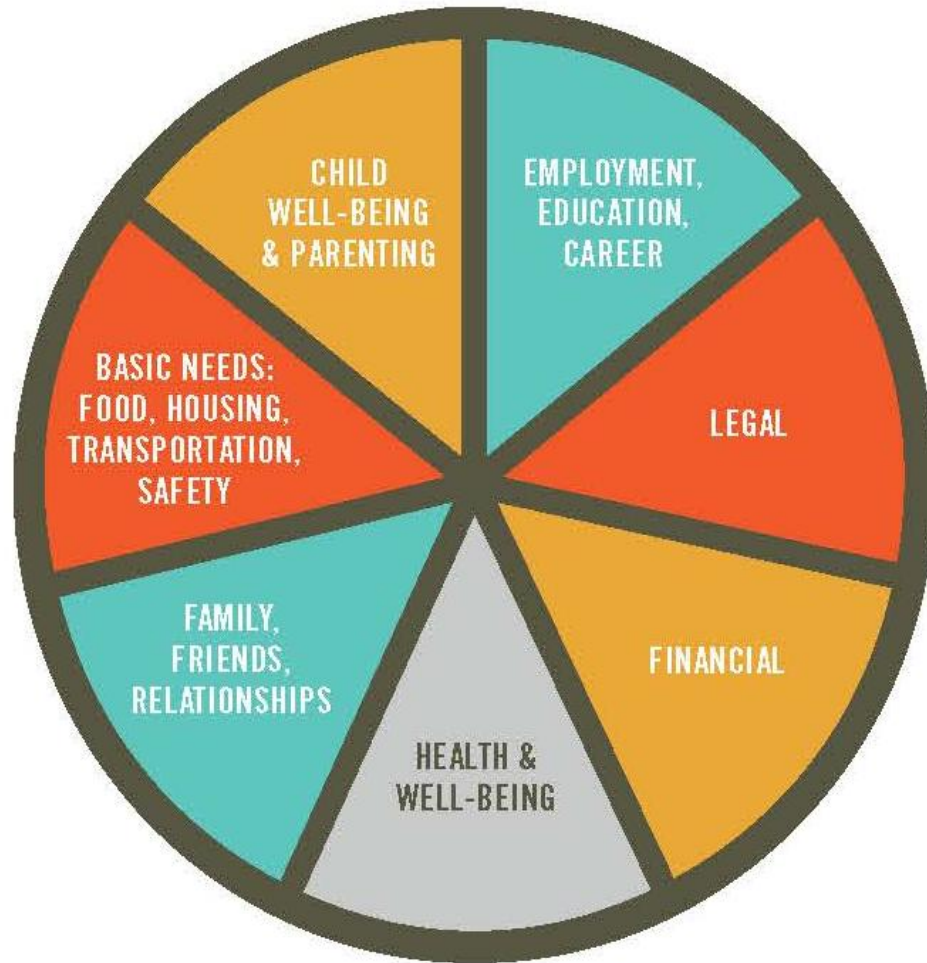
EQUALITY doesn't mean EQUITY



Maine Office of Health Equity: accessed at: <http://www.maine.gov/dhhs/mecdc/health-equity/>

Family-Centered Coaching recognizes the impact of institutional racism and implicit bias within the organizations and systems working with families—and offers an approach that can reduce the impact of that stress and trauma, as well as supporting a shift in how organizations engage parents and family members.

THE WHEEL OF LIFE



Six Steps of Family- Centered Coaching

FAMILY-CENTERED COACHING



STEP 1:

PREPARE FOR
THE MEETING

COACH RESOURCES:

READY TO COACH
TODAY CHECKLIST

EVERYDAY
STRATEGIES
FOR WORKING
WITH FAMILIES



STEP 2:

BUILD THE
RELATIONSHIP

PARENT TOOLS:

WHO IS IN
MY FAMILY?

MY HOPES
AND DREAMS

COACH RESOURCES:

FAMILY-
CENTERED
COACHING

STEP-BY-STEP GUIDE
TO FAMILY-
CENTERED COACHING
WITH PARENTS

BECOMING AN
ACTIVE LISTENER



STEP 3:

FOCUS OUR
WORK

PARENT TOOLS:

THE WHEEL OF LIFE

COACH RESOURCES:

CONTENT MODULES
TEMPLATE FOR
DEVELOPING A LOCAL
RESOURCE GUIDE



STEP 4:

ASSESS WHAT
ROLE TO PLAY

PARENT TOOLS:

ROLES A COACH
CAN PLAY

COACH RESOURCES:

THE SIX FAMILY-
CENTERED COACHING
STEPS: ROLES OF
PARENT AND COACH

WHAT APPROACH DO I
USE? ASSESSING
READINESS
FOR CHANGE

TRANSITIONING
AMONG THE
APPROACHES

FAMILY-FOCUSED
POWERFUL
QUESTIONS



STEP 5:

PLAN, DO,
REVIEW

PARENT TOOLS:

PLAN, DO, REVIEW

COACH RESOURCES:

HOW TO HAVE
EFFECTIVE
BRAINSTORMING
SESSIONS



STEP 6:

PLAN FOR
SUPPORT AND
ACCOUNTABILITY

PARENT TOOLS:

PLAN, DO, REVIEW

COACH RESOURCES:

HOW TO HAVE
EFFECTIVE
BRAINSTORMING
SESSIONS

Integrated Lessons from Other Disciplines

- ✓ Trauma-
Informed Care
- ✓ Executive Skills
- ✓ Behavioral
Economics



FAMILY-CENTERED COACHING

*Assessing Organizational Readiness
& Creating Partnerships*



Organizational Assessment Tool

Photo credit: Used by permission from WK Kellogg Foundation

SNAP E&T Federal Policy News

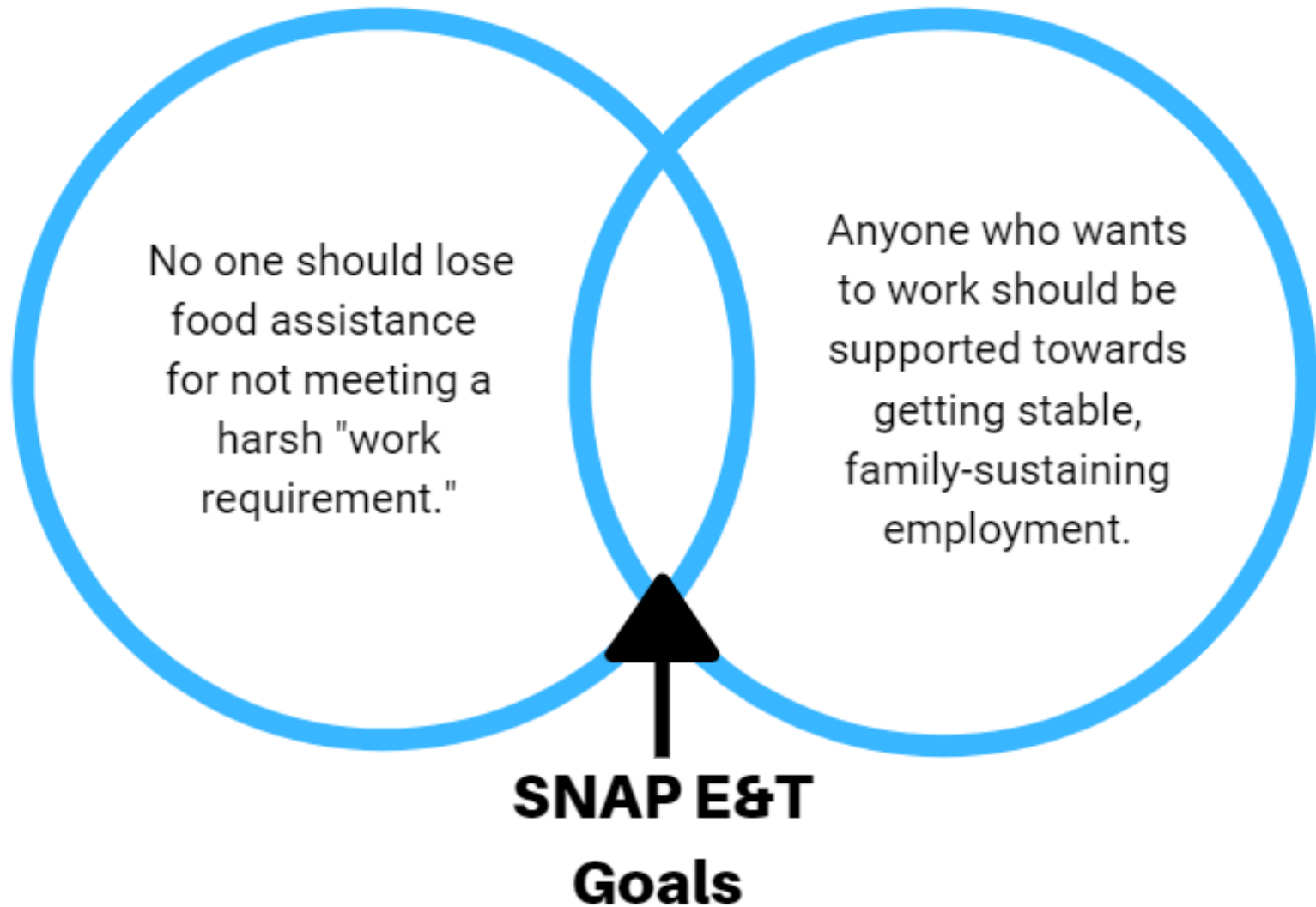
Good news: 2018 Farm Bill included:

- Required consultation with state workforce system
- Small increase in administrative \$\$ for SNAP E&T

Bad news: proposed rule effective Oct 2019

- Severely limits state time limit waivers for ABAWDs
- Up to 414,000 ABAWDs would have to meet work requirements

Jobs Council SNAP E&T Priorities



Jobs Council SNAP E&T Priorities

- Comprehensive planning process to create integrated, skills-based employment strategy
- Transition to statewide voluntary SNAP E&T
- Increase federally-matched state investments in SNAP E&T



Carrie Thomas

Executive Director

carrie@cjcn.net

312.252.0459

Kaitlyn McGovern

Program Manager

kaitlyn@cjcn.net

312.252.0460 x304

www.cjcn.net



@Chicago Jobs Council



@ChiJobsCouncil

Chicago Jobs Council