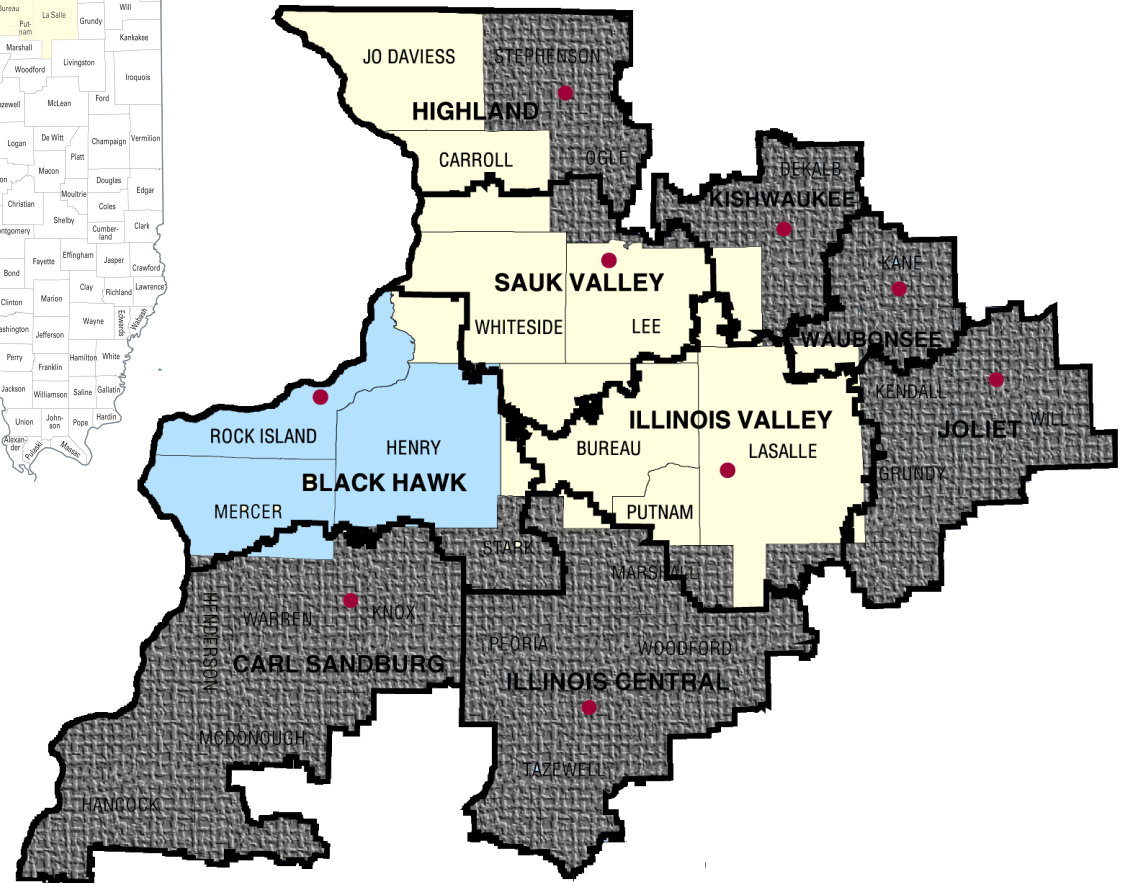


NORTHWEST ECONOMIC DEVELOPMENT REGION

Northwest EDR Counties	2013 Population Estimates	Percent of EDR Population
Bureau	34,056	6%
Carroll	14,910	3%
Henry	49,860	9%
Jo Daviess	22,407	4%
LaSalle	112,183	20%
Lee	34,858	6%
Mercer	16,178	3%
Putnam	5,801	1%
Rock Island	147,258	27%
Whiteside	57,557	10%
Total Population	495,068	

Source: US Census Bureau Annual County Resident Population Estimates for 2013



- LWIA 4
- LWIA 13
- COMMUNITY COLLEGE
- DISTRICT BOUNDARIES & LOCATIONS

Northwest EDR Population Centers	2013 Population Estimates	Percent of EDR Population
Moline	43,116	9%
Rock Island	38,877	8%
East Moline	21,360	4%
Ottawa	18,562	4%
Dixon	15,333	3%
Sterling	15,152	3%

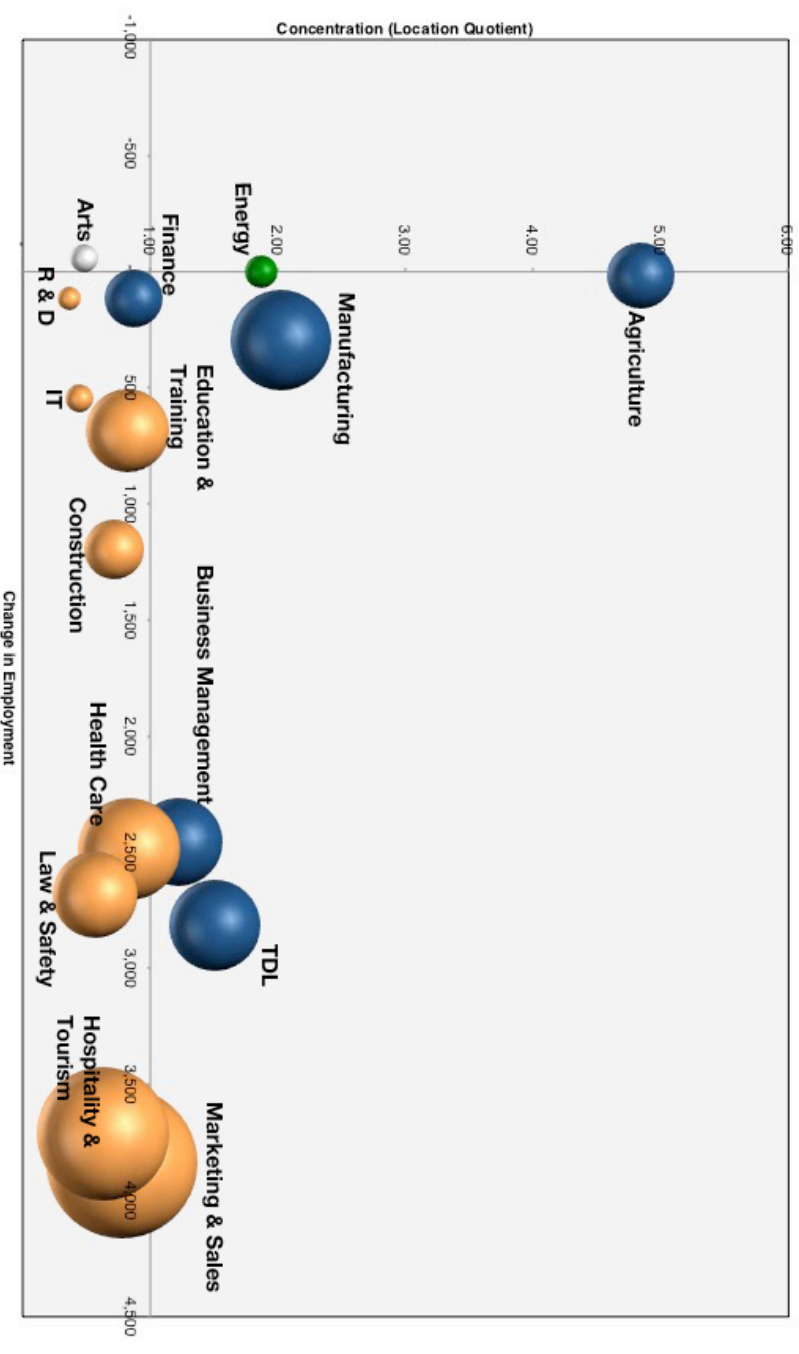
Source: US Census Bureau Annual County Resident Population Estimates for 2013

NORTHWEST REGION

EMPLOYMENT BY INDUSTRY / OCCUPATIONAL CLUSTER

Cluster	2012 Employment	2022 Employment	Net Employment Change	Percent Employment Change	Concentration (Location Quotient)
Marketing & Sales	60,458	64,292	3,834	6.3%	0.78
Hospitality & Tourism	45,971	49,684	3,713	8.1%	0.63
Health Care	26,620	29,106	2,486	9.3%	0.83
Manufacturing	28,197	28,492	295	1.0%	2.02
Transportation, Distribution & Logistics	20,468	23,283	2,815	13.8%	1.50
Business Management	19,390	21,846	2,456	12.7%	1.22
Law & Public Safety	17,561	20,244	2,683	15.3%	0.57
Education & Training	18,211	18,895	684	3.8%	0.82
Agriculture	12,181	12,198	17	0.1%	4.84
Construction	8,900	10,095	1,195	13.4%	0.72
Finance	9,010	9,124	114	1.3%	0.87
Energy	2,766	2,763	-3	-0.1%	1.87
Arts & Audio Visual	2,101	2,045	-56	-2.7%	0.48
Information Technology	1,438	1,984	546	38.0%	0.44
Research & Development	1,243	1,360	117	9.4%	0.36

MAJOR INDUSTRY CLUSTERS IN THE NORTHWEST REGION



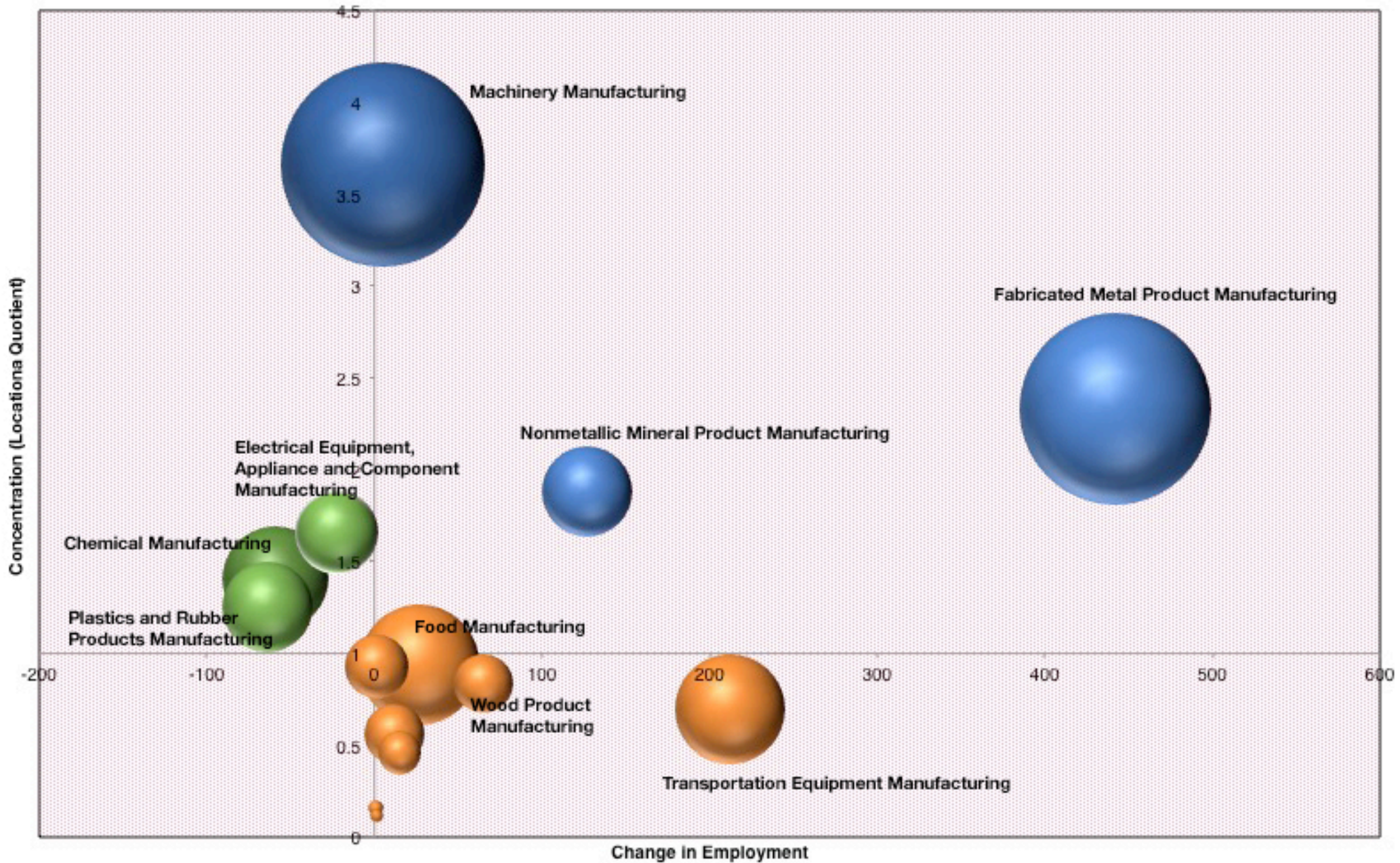
MANUFACTURING

LEADING, EMERGING AND MATURING INDUSTRIES IN THE NORTHWEST REGION

NAICS	DESCRIPTION	2012 Employment	2022 Employment	Employment Change 2012- 22	% Change 2012-22	2014 LQ	Class
311	Food Manufacturing	2,518	2,545	27	1.1%	0.94	Emerging
312	Beverage and Tobacco Product Manufacturing	18	16	(2)	-11.1%	0.05	
313	Textile Mills	-	-	-	0.0%	-	
314	Textile Product Mills	24	25	1	4.2%	0.11	Emerging
315	Apparel Manufacturing	-	-	-	0.0%	-	
316	Leather and Allied Product Manufacturing	-	-	-	0.0%	-	
321	Wood Product Manufacturing	522	587	65	12.5%	0.84	Emerging
322	Paper Manufacturing	260	237	(23)	-8.8%	0.37	
323	Printing and Related Support Activities	867	653	(214)	-24.7%	1.02	
324	Petroleum and Coal Products Manufacturing	33	34	1	3.0%	0.16	Emerging
325	Chemical Manufacturing	2,044	1,985	(59)	-2.9%	1.41	Maturing
326	Plastics and Rubber Products Manufacturing	1,486	1,422	(64)	-4.3%	1.25	Maturing
327	Nonmetallic Mineral Product Manufacturing	1,269	1,396	127	10.0%	1.88	Leading
331	Primary Metal Manufacturing	682	683	1	0.1%	0.93	Emerging
332	Fabricated Metal Product Manufacturing	6,034	6,476	442	7.3%	2.33	Leading
333	Machinery Manufacturing	7,390	7,395	5	0.1%	3.66	Leading
334	Computer and Electronic Product Manufacturing	1,099	871	(228)	-20.7%	0.55	
335	Electrical Equipment, Appliance, and Component Manufacturing	1,136	1,113	(23)	-2.0%	1.66	Maturing
336	Transportation Equipment Manufacturing	1,921	2,133	212	11.0%	0.70	Emerging
337	Furniture and Related Product Manufacturing	296	311	15	5.1%	0.46	Emerging
339	Miscellaneous Manufacturing	598	610	12	2.0%	0.56	Emerging

MANUFACTURING

LEADING, EMERGING AND MATURING INDUSTRIES IN THE NORTHWEST REGION



MANUFACTURING

INDUSTRIES FOR PRINCIPAL OCCUPATIONS IN THE NORTHWEST REGION

NAICS	Description	Pathway	SOC Code	SOC Title	Average Annual Job Openings	2022 Percent of Employment in this Industry		
						Annual Occupation Openings in Industry	that is in this Occupation	
334	Computer and Electronic Product Manufacturing	Manufacturing Production Process Development	15-1132	Software Developers, Applications**	17	1	3.5	2.8
334	Computer and Electronic Product Manufacturing	Manufacturing Production Process Development	15-1133	Software Developers, Systems Software**	11	1	10.8	5.6
325	Chemical Manufacturing					1	4.2	1.3
332	Fabricated Metal Product Manufacturing					1	5.6	0.9
333	Machinery Manufacturing	Manufacturing Production Process Development	17-2112	Industrial Engineers**	12	1	6.9	1.6
334	Computer and Electronic Product Manufacturing					1	12.2	3
336	Transportation Equipment Manufacturing					2	17.6	2.8
332	Fabricated Metal Product Manufacturing					1	6.2	1.1
333	Machinery Manufacturing	Manufacturing Production Process Development	17-2141	Mechanical Engineers**	17	2	12.3	3.3
334	Computer and Electronic Product Manufacturing					1	6.3	1.8
336	Transportation Equipment Manufacturing					2	11.9	2.2
334	Computer and Electronic Product Manufacturing	Manufacturing Production Process Development	41-4011	Sales Reps, Wholesale/Mfg. Tech./Sclprods**	23	1	3.9	1.7
311	Food Manufacturing					1	1	1.1
312	Beverage and Tobacco Product Manufacturing					1	0.6	5.2
321	Wood Product Manufacturing					1	0.6	2.4
323	Printing and Related Support Activities					1	1.2	4.4
325	Chemical Manufacturing					1	0.7	1.4
326	Plastics and Rubber Products Manufacturing					1	0.7	2
327	Nonmetallic Mineral Product Manufacturing	Manufacturing Production Process Development	41-4012	Sales Reps/Wholesale/Mfg. Ex.Tech./Sclntic**	96	1	0.7	2.9
332	Fabricated Metal Product Manufacturing					2	2	2.1
333	Machinery Manufacturing					1	1.4	2.3
334	Computer and Electronic Product Manufacturing					1	0.6	0.9
336	Transportation Equipment Manufacturing					1	0.7	0.8
339	Miscellaneous Manufacturing					1	0.7	2.2
336	Transportation Equipment Manufacturing	Logistics & Inventory Control	43-5061	Production, Planning & Expediting Clerks**	11	1	5.8	1.2
311	Food Manufacturing					1	2.6	1.3
312	Beverage and Tobacco Product Manufacturing					1	1.7	3.5
321	Wood Product Manufacturing					1	1.3	2.1
322	Paper Manufacturing					1	1.9	1.8
325	Chemical Manufacturing					1	1.7	2
326	Plastics and Rubber Products Manufacturing					2	3.9	1.8
332	Fabricated Metal Product Manufacturing	Logistics & Inventory Control	43-5071	Shipping Receiving & Traffic Clerks**	41	1	2.5	1.7
333	Machinery Manufacturing					1	1.5	1.1
334	Computer and Electronic Product Manufacturing					1	2.5	1.2
336	Transportation Equipment Manufacturing					1	1.5	2.1
311	Food Manufacturing					3	9.1	2.4
312	Beverage and Tobacco Product Manufacturing					1	1.7	3.5
321	Wood Product Manufacturing					1	1.5	1.4
322	Paper Manufacturing					1	3.4	3.7
325	Chemical Manufacturing					2	5.3	2.7
326	Plastics and Rubber Products Manufacturing	Maintenance, Installation & Repair	49-9041	Industrial Machinery Mechanics**	35	1	3.4	2.1
327	Nonmetallic Mineral Product Manufacturing					1	1.7	1.6
331	Primary Metal Manufacturing					1	3.8	4
332	Fabricated Metal Product Manufacturing					2	4.5	1.1
333	Machinery Manufacturing					2	5	1.9
336	Transportation Equipment Manufacturing					2	4.9	1.3
311	Food Manufacturing					1	2.3	2.3
325	Chemical Manufacturing					1	1.2	2.4
331	Primary Metal Manufacturing	Maintenance, Installation & Repair	49-9071	General Maintenance & Repair Workers**	48	1	1.1	4.4
332	Fabricated Metal Product Manufacturing					1	1.4	1.4
336	Transportation Equipment Manufacturing					1	1.2	1.2
311	Food Manufacturing					2	7.8	3.2
321	Wood Product Manufacturing					1	2.5	3.7
322	Paper Manufacturing					1	2.2	3.8
323	Printing and Related Support Activities					1	2.9	3.9
325	Chemical Manufacturing					1	4.9	3.9
326	Plastics and Rubber Products Manufacturing					1	4.5	4.4
327	Nonmetallic Mineral Product Manufacturing					1	5.7	3.3
331	Primary Metal Manufacturing	Production	51-1011	1st-Line Sprvs./Mgns. Prod. & Operating Workers**	23	1	2.8	4.5
332	Fabricated Metal Product Manufacturing					3	11.1	4.3
333	Machinery Manufacturing					1	5.7	3.3
334	Computer and Electronic Product Manufacturing					1	3.1	1.9
336	Transportation Equipment Manufacturing					2	7.2	2.9
337	Furniture and Related Product Manufacturing					1	2.5	4.1
339	Miscellaneous Manufacturing					1	3.2	3.5
311	Food Manufacturing					2	2.5	1.9
321	Wood Product Manufacturing					3	3.3	9.1
325	Chemical Manufacturing					1	1.2	1.8
326	Plastics and Rubber Products Manufacturing					3	3.6	6.5
327	Nonmetallic Mineral Product Manufacturing					1	1.2	3.2
331	Primary Metal Manufacturing					1	0.7	2.2
332	Fabricated Metal Product Manufacturing	Production	51-2092	Team Assemblers	79	6	7.3	5.3
333	Machinery Manufacturing					8	10	10.7
334	Computer and Electronic Product Manufacturing					3	3.6	4.1
335	Electrical Equipment, Appliance, and Component Manufacturing					3	3.8	12.8

336	Transportation Equipment Manufacturing					16	20.3	15.1
337	Furniture and Related Product Manufacturing					3	3.3	9.9
339	Miscellaneous Manufacturing					4	5.6	11.6
311	Food Manufacturing	Production	51-3092	Food Batchmakers		15	79.3	5.6
326	Plastics and Rubber Products Manufacturing					1	4.5	1.2
331	Primary Metal Manufacturing					1	4	1.8
332	Fabricated Metal Product Manufacturing					9	39.3	4.2
333	Machinery Manufacturing	Production	51-4011	Computer-Controlled Machine Tool Operators**	24	4	18.4	2.9
334	Computer and Electronic Product Manufacturing					1	5	0.9
335	Electrical Equipment, Appliance, and Component Manufacturing					1	3.7	1.8
336	Transportation Equipment Manufacturing					4	18.2	2
339	Miscellaneous Manufacturing					1	3.9	1.2
326	Plastics and Rubber Products Manufacturing					1	1.5	1.1
331	Primary Metal Manufacturing					1	1.9	2.2
332	Fabricated Metal Product Manufacturing					21	35.1	10.2
333	Machinery Manufacturing	Production	51-4041	Machinists**	60	10	16.6	7
334	Computer and Electronic Product Manufacturing					2	3	1.4
335	Electrical Equipment, Appliance, and Component Manufacturing					1	1.6	2.2
336	Transportation Equipment Manufacturing					7	12	3.6
339	Miscellaneous Manufacturing					2	2.7	2.3
332	Fabricated Metal Product Manufacturing					6	24.3	6.2
333	Machinery Manufacturing	Production	51-4121	Welders, Cutters, Solders & Brazers**	25	3	13.2	4.9
336	Transportation Equipment Manufacturing					3	12.5	3.3
311	Food Manufacturing					2	6.6	2.2
325	Chemical Manufacturing					1	4.8	3.2
326	Plastics and Rubber Products Manufacturing					2	5.6	4.7
331	Primary Metal Manufacturing					1	2.3	3.2
332	Fabricated Metal Product Manufacturing	Manufacturing Production Process Development	51-9061	Inspectors, Testers, Sorters & Weighers	27	2	8.9	2.9
333	Machinery Manufacturing					1	4.7	2.3
334	Computer and Electronic Product Manufacturing					1	2	3
335	Electrical Equipment, Appliance, and Component Manufacturing					3	10	3.4
336	Transportation Equipment Manufacturing					1	2.9	2.7
339	Miscellaneous Manufacturing					7	30.3	7.8
311	Food Manufacturing					1	5.2	10.3
312	Beverage and Tobacco Product Manufacturing	Production	51-9111	Packaging & Filling Machine Operators & Tenders	24	3	11.8	6
325	Chemical Manufacturing					1	3.6	2.2
326	Plastics and Rubber Products Manufacturing					3	10.9	2
321	Wood Product Manufacturing					1	1.7	1.1
322	Paper Manufacturing					1	2.4	1.8
325	Chemical Manufacturing					1	3.5	1.2
326	Plastics and Rubber Products Manufacturing					1	2.4	1
327	Nometallic Mineral Product Manufacturing	Production	51-9199	Production Workers, All Other	30	1	2.1	1.3
331	Primary Metal Manufacturing					1	1.7	1.2
332	Fabricated Metal Product Manufacturing					1	3.8	0.7
333	Machinery Manufacturing					1	2.9	0.7
336	Transportation Equipment Manufacturing					1	4.8	0.9
339	Miscellaneous Manufacturing					1	2.8	1.4

MANUFACTURING

INDUSTRIES FOR PRINCIPAL OCCUPATIONS IN THE NORTHWEST REGION

Pathway	SOCCode	SOCTitle	Average Annual Job Openings	Annual Occupational Openings in Industry		2022 Percent of Occupation that is in this Industry	2022 Percent of Productive Occupation that is this Occupation	Median Annual	Education Entry Level	Experience Entry Level	Training Entry Level
				1	2						
Manufacturing Production Process Development	15-1132	Software Developers, Applications**	17	1	1	3.5	2.8	\$74,536	Bachelor's degree	None	None
				1	1	10.8	5.6				
Manufacturing Production Process Development	15-1133	Software Developers, Systems Software**	11	1	1	4.2	1.3	\$92,453	Bachelor's degree	None	None
				1	1	5.6	0.9				
Manufacturing Production Process Development	17-2112	Industrial Engineers**	12	1	1	6.9	1.6	\$74,132	Bachelor's degree	None	None
				1	1	12.2	3				
Manufacturing Production Process Development	17-2141	Mechanical Engineers**	17	1	2	17.6	2.8	\$74,997	Bachelor's degree	None	None
				2	1	6.2	1.1				
Manufacturing Production Process Development	17-2141	Mechanical Engineers**	17	2	1	12.3	3.3	\$74,997	Bachelor's degree	None	None
				1	2	6.3	1.8				
Manufacturing Production Process Development	41-4011	Sales Reps, Wholesale, Tech/S&P/Products**	23	1	2	11.9	2.2	\$58,236	Bachelor's degree	None	Moderate-term on-the-job training
				1	1	3.9	1.7				
Manufacturing Production Process Development	41-4011	Sales Reps, Wholesale, Tech/S&P/Products**	23	1	1	1	1.1	\$58,236	Bachelor's degree	None	Moderate-term on-the-job training
				1	1	0.6	5.2				
Manufacturing Production Process Development	41-4011	Sales Reps, Wholesale, Tech/S&P/Products**	23	1	1	0.6	2.4	\$58,236	Bachelor's degree	None	Moderate-term on-the-job training
				1	1	1.2	4.4				
Manufacturing Production Process Development	41-4012	Sales Reps/Wholesale/Mfg,Ex, Tech/Scientific**	96	1	1	0.7	1.4	\$49,575	High school diploma or equivalent	None	Moderate-term on-the-job training
				1	2	0.7	2.9				
Manufacturing Production Process Development	41-4012	Sales Reps/Wholesale/Mfg,Ex, Tech/Scientific**	96	2	2	2	2.1	\$49,575	High school diploma or equivalent	None	Moderate-term on-the-job training
				1	1	1.4	2.3				
Manufacturing Production Process Development	41-4012	Sales Reps/Wholesale/Mfg,Ex, Tech/Scientific**	96	1	1	0.6	0.9	\$49,575	High school diploma or equivalent	None	Moderate-term on-the-job training
				1	1	0.7	0.8				
Manufacturing Production Process Development	41-4012	Sales Reps/Wholesale/Mfg,Ex, Tech/Scientific**	96	1	1	0.7	0.8	\$49,575	High school diploma or equivalent	None	Moderate-term on-the-job training
				1	1	0.7	0.8				
Logistics & Inventory Control	43-5061	Production, Planning & Expediting Clerks**	11	1	1	5.8	1.2	\$43,150	High school diploma or equivalent	None	Moderate-term on-the-job training
				1	1	2.6	1.3				
Logistics & Inventory Control	43-5061	Production, Planning & Expediting Clerks**	11	1	1	1.3	2.1	\$43,150	High school diploma or equivalent	None	Moderate-term on-the-job training
				1	1	1.9	1.8				
Logistics & Inventory Control	43-5071	Shipping, Receiving & Traffic Clerks**	41	1	1	1.7	2	\$29,650	High school diploma or equivalent	None	Short-term on-the-job training
				2	2	3.9	1.8				
Logistics & Inventory Control	43-5071	Shipping, Receiving & Traffic Clerks**	41	1	1	2.5	1.7	\$29,650	High school diploma or equivalent	None	Short-term on-the-job training
				1	1	1.5	1.1				
Logistics & Inventory Control	43-5071	Shipping, Receiving & Traffic Clerks**	41	1	1	2.5	1.2	\$29,650	High school diploma or equivalent	None	Short-term on-the-job training
				1	1	1.5	2.1				
Maintenance, Installation & Repair	49-9041	Industrial Machinery Mechanics**	35	3	1	9.1	2.4	\$48,108	High school diploma or equivalent	None	Long-term on-the-job training
				1	1	1.7	3.5				
Maintenance, Installation & Repair	49-9041	Industrial Machinery Mechanics**	35	1	1	1.5	1.4	\$48,108	High school diploma or equivalent	None	Long-term on-the-job training
				1	1	3.4	2.1				
Maintenance, Installation & Repair	49-9041	Industrial Machinery Mechanics**	35	1	1	1.7	1.6	\$48,108	High school diploma or equivalent	None	Long-term on-the-job training
				1	2	3.8	4				
Maintenance, Installation & Repair	49-9041	Industrial Machinery Mechanics**	35	2	2	4.5	1.1	\$48,108	High school diploma or equivalent	None	Long-term on-the-job training
				2	2	5	1.9				
Maintenance, Installation & Repair	49-9041	Industrial Machinery Mechanics**	35	2	2	4.9	1.3	\$48,108	High school diploma or equivalent	None	Long-term on-the-job training
				1	1	2.3	2.3				
Maintenance, Installation & Repair	49-9041	Industrial Machinery Mechanics**	35	1	1	1.2	2.4	\$48,108	High school diploma or equivalent	None	Long-term on-the-job training
				1	1	1.1	4.4				
Maintenance, Installation & Repair	49-9071	General Maintenance & Repair Workers**	48	1	1	1.4	1.4	\$35,255	High school diploma or equivalent	None	Moderate-term on-the-job training
				1	1	1.4	1.4				
Production	51-1011	1st-Line Spvns/Mgrs, Prod. & Operating Workers**	23	1	1	2.8	4.5	\$57,803	Postsecondary non-degree award	1 to 5 years	None
				3	3	11.1	4.3				
Production	51-1011	1st-Line Spvns/Mgrs, Prod. & Operating Workers**	23	1	1	5.7	3.3	\$57,803	Postsecondary non-degree award	1 to 5 years	None
				1	1	3.1	1.9				
Production	51-1011	1st-Line Spvns/Mgrs, Prod. & Operating Workers**	23	1	2	7.2	2.9	\$57,803	Postsecondary non-degree award	1 to 5 years	None
				1	1	2.5	4.1				
Production	51-1011	1st-Line Spvns/Mgrs, Prod. & Operating Workers**	23	1	1	3.2	3.5	\$57,803	Postsecondary non-degree award	1 to 5 years	None
				2	2	2.5	1.9				
Production	51-1011	1st-Line Spvns/Mgrs, Prod. & Operating Workers**	23	3	3	3.3	9.1	\$57,803	Postsecondary non-degree award	1 to 5 years	None
				1	1	1.2	1.8				
Production	51-1011	1st-Line Spvns/Mgrs, Prod. & Operating Workers**	23	3	3	3.6	6.5	\$57,803	Postsecondary non-degree award	1 to 5 years	None
				1	1	1.2	3.2				
Production	51-1011	1st-Line Spvns/Mgrs, Prod. & Operating Workers**	23	1	1	0.7	2.2	\$57,803	Postsecondary non-degree award	1 to 5 years	None
				6	6	7.3	5.3				
Production	51-2092	Team Assemblers	79	8	10	10	10.7	\$24,493	High school diploma or equivalent	None	Moderate-term on-the-job training
				3	3	3.6	4.1				
Production	51-2092	Team Assemblers	79	3	3	3.8	12.8	\$24,493	High school diploma or equivalent	None	Moderate-term on-the-job training
				3	3	3.3	9.9				
Production	51-2092	Team Assemblers	79	16	16	20.3	15.1	\$24,493	High school diploma or equivalent	None	Moderate-term on-the-job training
				3	3	3.3	9.9				
Production	51-3092	Food Batchmakers	15	4	4	5.6	11.6	\$34,732	High school diploma or equivalent	Less than 1 year	Short-term on-the-job training
				1	1	4.5	1.2				
Production	51-3092	Food Batchmakers	15	1	1	4	1.8	\$34,732	High school diploma or equivalent	Less than 1 year	Short-term on-the-job training
				9	9	39.3	4.2				
Production	51-4011	Computer-Controlled Machine Tool Operators**	24	4	4	18.4	2.9	\$35,918	High school diploma or equivalent	None	Moderate-term on-the-job training
				1	1	5	0.9				
Production	51-4011	Computer-Controlled Machine Tool Operators**	24	1	1	3.7	1.8	\$35,918	High school diploma or equivalent	None	Moderate-term on-the-job training
				4	4	18.2	2				

Production	51-4041	Machinists**	60	1	1.5	1.1	\$41,297	High school diploma or equivalent	None	Long-term on-the-job training
				21	35.1	10.2				
				10	16.6	7				
				2	3	1.4				
Production	51-4121	Welders, Cutters, Solderers & Brazers**	25	1	1.9	2.2	\$35,306	High school diploma or equivalent	Less than 1 Year	Moderate-term on-the-job training
				3	13.2	4.9				
				2	6.6	2.2				
				1	4.8	3.2				
Manufacturing Production Process Development	51-9061	Inspectors, Testers, Sorters & Weighers	27	2	5.6	4.7	\$34,231	High school diploma or equivalent	None	Moderate-term on-the-job training
				1	2.3	3.2				
				1	4.7	2.3				
				1	5.4	2.8				
Production	51-9111	Packaging & Filling Machine Operators & Tenders	24	1	2	3	\$27,526	High school diploma or equivalent	None	Moderate-term on-the-job training
				3	11.8	6				
				1	3.6	2.2				
				7	30.3	7.8				
Production	51-9199	Production Workers, All Other	30	1	2.1	1.3	\$26,302	High school diploma or equivalent	None	Moderate-term on-the-job training
				1	1.7	1.1				
				1	2.4	1				
				1	3.5	1.2				
				1	3.8	0.7				
				1	2.9	0.7				
				1	1.7	1.2				
				1	4.8	0.9				
				1	2.8	1.4				
				1	10.9	2				
1	1.7	1.1								

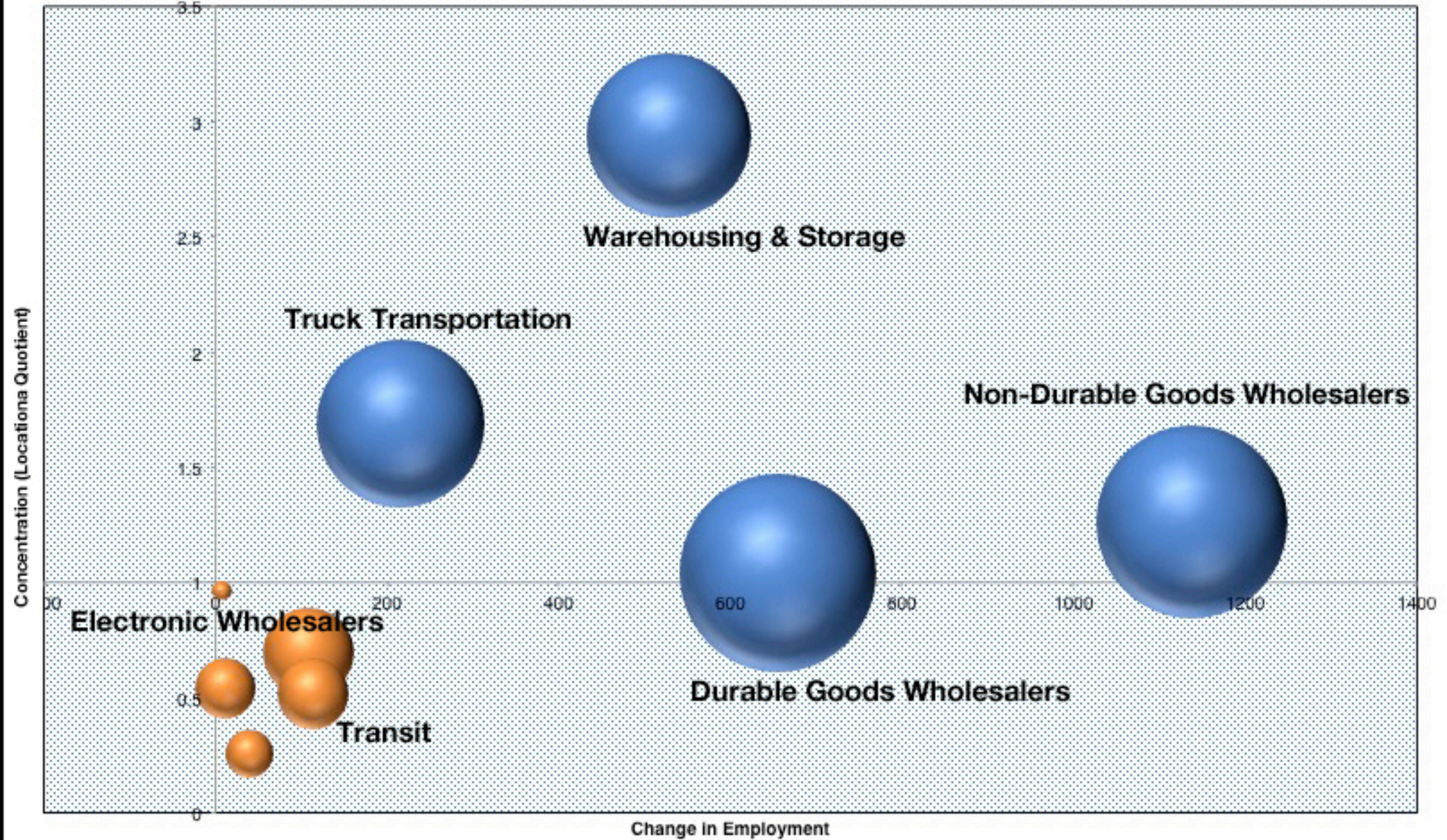
TRANSPORTATION, DISTRIBUTION & LOGISTICS

LEADING, EMERGING AND MATURING INDUSTRIES IN THE NORTHWEST REGION

NAICS	DESCRIPTION	2012 Employment	2022 Employment	Employment Change 2012-22	Growth Rate	LQ	Industry Class
423	Merchant Wholesalers, Durable Goods	5,396	6,051	655	12.1%	1.04	Leading
424	Merchant Wholesalers, Nondurable Goods	4,545	5,682	1,137	25.0%	1.26	Leading
425	Wholesale Electronic Markets and Agents and Brokers	1,121	1,229	108	9.6%	0.70	Emerging
481	Air Transportation	-	-	-	0.0%	-	
483	Water Transportation	-	-	-	0.0%	-	
484	Truck Transportation	4,172	4,387	215	5.2%	1.69	Leading
485	Transit and Ground Passenger Transportation	650	763	113	17.4%	0.52	Emerging
486	Pipeline Transportation	-	-	-	0.0%	-	
487	Scenic and Sightseeing Transportation	53	60	7	13.2%	0.97	Emerging
488	Support Activities for Transportation	309	349	40	12.9%	0.26	Emerging
492	Couriers and Messengers	524	536	12	2.3%	0.54	Emerging
493	Warehousing and Storage	3,698	4,226	528	14.3%	2.94	Leading

TRANSPORTATION, DISTRIBUTION & LOGISTICS

LEADING, EMERGING AND MATURING INDUSTRIES IN THE NORTHWEST REGION



TRANSPORTATION, DISTRIBUTION & LOGISTICS
INDUSTRIES FOR PRINCIPAL OCCUPATIONS IN THE NORTHWEST REGION

NAICS	DESCRIPTION	Pathway	SOC Code	SOC Title	Average Annual Job Openings	Annual Occupational Openings in Industry	2022 Percent of occupation	2022 Percent of industry
424	Merchant Wholesalers, Nondurable Goods	Warehousing and Distribution Center Operations	11-3071	Transportation, Storage & Distribution Managers**	8	1	8.6	0.5
484	Truck Transportation					1	10	0.7
493	Warehousing and Storage					1	9.1	1.3
423	Merchant Wholesalers, Durable Goods	Logistics Planning and Management Services	43-1011	1st-Line Supvrs/Mgrs, Office & Adm. Support Wkrs**	49	1	2.5	1.3
424	Merchant Wholesalers, Nondurable Goods					1	1.6	1.2
484	Truck Transportation	Transportation Operations	43-5032	Dispatchers**	14	3	17.9	2.6
485	Transit and Ground Passenger Transportation					1	7.8	3.2
488	Support Activities for Transportation					1	7.9	2.4
423	Merchant Wholesalers, Durable Goods	Warehousing and Distribution Center Operations	43-5071	Shipping, Receiving, & Traffic Clerks**	41	6	13.5	3.2
424	Merchant Wholesalers, Nondurable Goods					3	7.8	2.7
425	Wholesale Electronic Markets and Agents and Brokers					1	2.7	1.7
488	Support Activities for Transportation					1	1.8	1.8
492	Couriers and Messengers					2	5	7.2
493	Warehousing and Storage					2	4.7	4.1
423	Merchant Wholesalers, Durable Goods	Facility and Mobile Equipment Maintenance	49-3023	Automotive Service Technicians & Mechanics**	50	1	1.7	0.4
423	Merchant Wholesalers, Durable Goods	Facility and Mobile Equipment Maintenance	49-3031	Bus & Truck Mechanics & Diesel Eng. Specialists**	14	1	10.6	1
484	Truck Transportation					3	18.6	3.5
485	Transit and Ground Passenger Transportation					1	5	2.6
423	Merchant Wholesalers, Durable Goods	Warehousing and Distribution Center Operations	51-1011	1st-Line Supvrs/Mgrs, Prod/Operating Workers**	23	1	2.7	0.5
423	Merchant Wholesalers, Durable Goods	Warehousing and Distribution Center Operations	53-1021	1st-Line Supvrs/Mgrs, Helpers & Laborers	18	2	8.6	0.5
424	Merchant Wholesalers, Nondurable Goods					2	9.9	0.9
484	Truck Transportation					1	4.9	0.6
488	Support Activities for Transportation					1	3.5	0.9
492	Couriers and Messengers					2	9.6	3.6
493	Warehousing and Storage					2	13.7	3.2
485	Transit and Ground Passenger Transportation	Transportation Operations	53-3021	Bus Drivers, Transit & Intercity	10	4	42.3	15.1
485	Transit and Ground Passenger Transportation	Transportation Operations	53-3022	School Bus Drivers	17	7	41.2	41.1
423	Merchant Wholesalers, Durable Goods	Transportation Operations	53-3032	Truck Drivers, Heavy & Tractor Trailer**	103	3	3.2	2
424	Merchant Wholesalers, Nondurable Goods					8	7.9	7.3
425	Wholesale Electronic Markets and Agents and Brokers					1	0.5	0.8
484	Truck Transportation					48	46.3	59.7
488	Support Activities for Transportation					3	3.1	8.5
492	Couriers and Messengers					2	1.5	5.6
493	Warehousing and Storage					2	2.2	5.3
423	Merchant Wholesalers, Durable Goods	Transportation Operations	53-3033	Truck Drivers, Light & Delivery Services	42	4	8.4	2.5
424	Merchant Wholesalers, Nondurable Goods					3	7.6	3.2
425	Wholesale Electronic Markets and Agents and Brokers					1	1.8	1.4
484	Truck Transportation					3	6.1	3.6
488	Support Activities for Transportation					1	1.2	1.5
492	Couriers and Messengers					7	17.1	30.5
493	Warehousing and Storage					1	1.9	2.1

TRANSPORTATION, DISTRIBUTION & LOGISTICS
INDUSTRIES FOR PRINCIPAL OCCUPATIONS IN THE NORTHWEST REGION

Pathway	SOC Code	SOC Title	Average Annual Job Openings	Annual Occupational Openings in Industry	2022 Percent of occupation	2022 Percent of industry	Median Annual	Education Entry Level	Experience Entry Level	Training Entry Level
Warehousing and Distribution Center Operations	11-3071	Transportation, Storage & Distribution Managers**	8	1	8.6	0.5	\$79,501	High school diploma or equivalent	More than 5 years	None
				1	10	0.7				
				1	9.1	1.3				
Logistics Planning and Management Services	43-1011	1st-Line Supvrs/Mgrs, Office & Adm. Support Wkrs**	49	1	2.5	1.3	\$43,137	High school diploma or equivalent	1 to 5 years	None
				1	1.6	1.2				
				3	17.9	2.6				
Transportation Operations	43-5032	Dispatchers**	14	1	7.8	3.2	\$33,351	High school diploma or equivalent	None	Moderate-term on-the-job training
				1	7.9	2.4				
				6	13.5	3.2				
Warehousing and Distribution Center Operations	43-5071	Shipping, Receiving, & Traffic Clerks**	41	3	7.8	2.7	\$29,650	High school diploma or equivalent	None	Short-term on-the-job training
				1	2.7	1.7				
				1	1.8	1.8				
				2	5	7.2				
				2	4.7	4.1				
				1	1.7	0.4				
Facility and Mobile Equipment Maintenance	49-3023	Automotive Service Technicians & Mechanics**	50	1	1.7	0.4	\$37,261	High school diploma or equivalent	None	Long-term on-the-job training
Facility and Mobile Equipment Maintenance	49-3031	Bus & Truck Mechanics & Diesel Eng. Specialists**	14	1	10.6	1	\$37,935	High school diploma or equivalent	None	Long-term on-the-job training
				3	18.6	3.5				
				1	5	2.6				
Warehousing and Distribution Center Operations	51-1011	1st-Line Supvrs/Mgrs, Prod/Operating Workers**	23	1	2.7	0.5	\$57,803	Postsecondary non-degree award	1 to 5 years	None
				2	8.6	0.5				
				2	9.9	0.9				
Warehousing and Distribution Center Operations	53-1021	1st-Line Supvrs/Mgrs, Helpers & Laborers	18	1	4.9	0.6	\$52,733	High school diploma or equivalent	1 to 5 years	None
				1	3.5	0.9				
				2	9.6	3.6				
				2	13.7	3.2				
				4	42.3	15.1				
Transportation Operations	53-3021	Bus Drivers, Transit & Intercity	10	4	42.3	15.1	\$27,900	High school diploma or equivalent	None	Moderate-term on-the-job training
Transportation Operations	53-3022	School Bus Drivers	17	7	41.2	41.1	\$26,334	High school diploma or equivalent	None	Moderate-term on-the-job training
Transportation Operations	53-3032	Truck Drivers, Heavy & Tractor Trailer**	103	3	3.2	2	\$40,413	High school diploma or equivalent	1 to 5 years	Short-term on-the-job training
				8	7.9	7.3				
				1	0.5	0.8				
				48	46.3	59.7				
				3	3.1	8.5				
				2	1.5	5.6				
Transportation Operations	53-3033	Truck Drivers, Light & Delivery Services	42	2	2.2	5.3	\$31,241	High school diploma or equivalent	None	Short-term on-the-job training
				4	8.4	2.5				
				3	7.6	3.2				
				1	1.8	1.4				
				3	6.1	3.6				
				1	1.2	1.5				
7	17.1	30.5								
1	1.9	2.1								

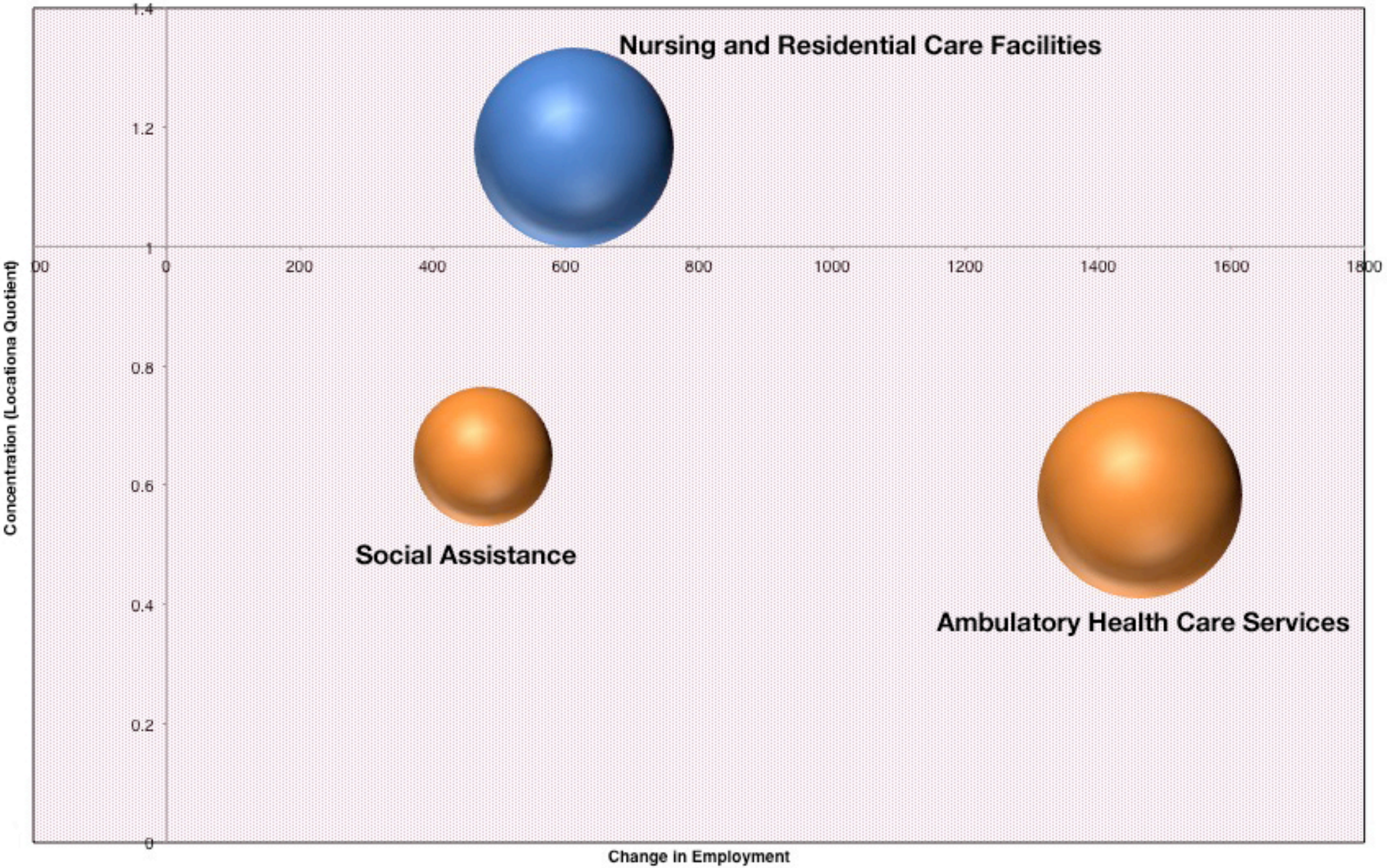
HEALTH CARE

LEADING, EMERGING AND MATURING INDUSTRIES IN THE NORTHWEST REGION

NAICS	DESCRIPTION	2012 Employment	2022 Employment	Employment Change 2012- 22	% Change 2012-22	2014 LQ	Class
621	Ambulatory Health Care Services	6,893	8,356	1,463	21.2%	0.58	Emerging
622	Hospitals	9,070	9,006	(64)	-0.7%	0.82	
623	Nursing and Residential Care Facilities	7,297	7,909	612	8.4%	1.17	Leading
624	Social Assistance	3,360	3,835	475	14.1%	0.65	Emerging

HEALTH CARE

LEADING, EMERGING AND MATURING INDUSTRIES IN THE NORTHWESTERN REGION



HEALTH CARE

INDUSTRIES FOR PRINCIPAL OCCUPATIONS IN THE NORTHWEST REGION

NAICS	Description	Pathway	SOC Code	SOCTitle	Average Annual Job Openings	Annual	2022 Percent	2022 Percent
						Employment in this Industry	of Employment in this Industry	of Employment in this Industry
621	Ambulatory Health Care Services	Health Informatics	11-3011	Administrative Services Managers **	12	1	5.9	0.2
622	Hospitals					1	6	0.3
621	Ambulatory Health Care Services	Health Informatics	11-9111	Medical & Health Services Managers	13	4	30	1.3
622	Hospitals					5	36.4	2.1
623	Nursing and Residential Care Facilities					1	10.8	1.1
621	Ambulatory Health Care Services	Support Services	21-1014	Mental Health Counselors**	6	2	30.4	0.6
622	Hospitals					1	10	0.3
623	Nursing and Residential Care Facilities	Support Services				1	17.6	0.7
624	Social Assistance					1	20.1	0.9
623	Nursing and Residential Care Facilities	Support Services	21-1015	Rehabilitation Counselors	6	1	13.4	0.5
624	Social Assistance					3	45.7	1.8
621	Ambulatory Health Care Services	Support Services	21-1093	Social & Human Services Assistants**	13	1	8	0.4
623	Nursing and Residential Care Facilities					2	17.1	2
624	Social Assistance	Health Informatics	21-1099	Community/Social Services Specialists, All Other	6	5	40.7	5.1
624	Social Assistance					2	25.9	0.9
624	Social Assistance	Therapeutic Services	29-1051	Pharmacists	9	2	25.3	1.3
622	Hospitals					8	56.3	1.8
621	Ambulatory Health Care Services	Therapeutic Services	29-1123	Physical Therapists	15	4	25	1
622	Hospitals					1	6.7	0.5
623	Nursing and Residential Care Facilities	Therapeutic Services	29-1127	Speech-Language Pathologists	8	2	28.4	0.5
622	Hospitals					1	13.6	0.3
621	Ambulatory Health Care Services	Therapeutic Services	29-1141	Registered Nurses	102	21	20.1	7.4
622	Hospitals					60	59.2	28.9
623	Nursing and Residential Care Facilities	Therapeutic Services	29-2012	Medical & Clinical Lab Technicians	8	7	7	5.8
624	Social Assistance					1	0.9	0.8
621	Ambulatory Health Care Services	Diagnostic Services	29-2012	Medical & Clinical Lab Technicians	8	4	44.3	1.1
622	Hospitals					3	41.4	1.3
621	Ambulatory Health Care Services	Therapeutic Services	29-2021	Dental Hygienists	9	9	97.4	2.8
622	Hospitals					12	55	1.8
621	Ambulatory Health Care Services	Therapeutic Services	29-2041	Emergency Medical Techs & Paramedics	21	3	15.2	0.7
622	Hospitals					1	16.2	1
621	Ambulatory Health Care Services	Therapeutic Services	29-2052	Pharmacy Technicians	7	10	28.9	3
622	Hospitals					6	16.3	2.3
623	Nursing and Residential Care Facilities	Therapeutic Services	29-2061	Licensed Practical Nurses	36	14	39.1	9.1
624	Social Assistance					1	1.4	0.4
621	Ambulatory Health Care Services	Health Informatics	29-2071	Med Records & Health Info Technicians	10	4	35.4	0.9
622	Hospitals					4	37.6	1.3
623	Nursing and Residential Care Facilities					1	8.9	0.5
621	Ambulatory Health Care Services	Therapeutic Services	31-1014	Nursing Assistants	71	6	9	1.8
622	Hospitals					17	24.4	6.6
623	Nursing and Residential Care Facilities	Therapeutic Services	31-1014	Nursing Assistants	71	38	53.9	24.4
624	Social Assistance					1	1.9	1
621	Ambulatory Health Care Services	Health Informatics	31-9011	Massage Therapists	6	1	24.6	0.5
621	Ambulatory Health Care Services	Therapeutic Services	31-9091	Dental Assistants	10	1	24.6	0.5
621	Ambulatory Health Care Services	Health Informatics	31-9092	Medical Assistants	19	10	95.4	4.1
622	Hospitals					15	79.7	6.6
621	Ambulatory Health Care Services	Health Informatics	31-9099	Healthcare Support Workers, All Other	9	2	12.4	1.4
622	Hospitals					2	22.5	0.3
623	Nursing and Residential Care Facilities					3	33.9	0.6
622	Hospitals					1	8.5	0.3
622	Hospitals	Health Informatics	35-1012	1st-Line Svcs/Mgrs, Food Prep/Serv **	44	1	1.2	0.2
623	Nursing and Residential Care Facilities	Health Informatics				1	1.2	0.2
623	Nursing and Residential Care Facilities	Health Informatics				1	2.7	0.7
621	Ambulatory Health Care Services	Health Informatics	43-3011	Bill and Account Collectors**	20	1	2.7	0.7
622	Hospitals					2	11.8	0.6
621	Ambulatory Health Care Services					1	4.6	0.3
622	Hospitals					15	40.6	5.3
622	Hospitals	Health Informatics	43-4171	Receptionists & Information Clerks **	37	1	3.7	0.6
623	Nursing and Residential Care Facilities					1	2.9	0.8
624	Social Assistance					1	2	0.6

Pathway	SOC Code	SOC Title	Average Annual Job Openings	2022 Percent of Employment in this Industry		Median Annual	Education Entry Level	Experience Entry Level	Training Entry Level
				Annual Occupation Openings in Industry	Occupation that is in this Industry				
Health Informatics	11-3011	Administrative Services Managers **	12	1	5.9	0.2	High school diploma or equivalent	1 to 5 years	None
				4	30	1.3			
Health Informatics	11-9111	Medical & Health Services Managers	13	5	36.4	2.1	Bachelor's degree	None	None
				1	10.8	1.1			
				2	30.4	0.6			
Support Services	21-1014	Mental Health Counselors**	6	1	10	0.3	Master's degree	None	Internship/residency
				1	17.6	0.7			
				1	20.1	0.9			
Support Services	21-1015	Rehabilitation Counselors	6	1	13.4	0.5	Master's degree	None	None
				3	45.7	1.8			
				1	8	0.4			
Support Services	21-1093	Social & Human Services Assistants**	13	2	17.1	2	High school diploma or equivalent	None	Short-term on-the-job training
				5	40.7	5.1			
				2	25.9	0.9			
				2	25.9	0.9			
				2	25.9	0.9			
Health Informatics	21-1099	Community/Social Services Specialists, All Other	6	2	25.9	0.9	Master's degree	None	None
				2	25.9	0.9			
Therapeutic Services	29-1051	Pharmacists	9	2	25.3	1.3	Doctoral or professional degree	None	None
Therapeutic Services	29-1123	Physical Therapists	15	8	56.3	1.8	Doctoral or professional degree	None	None
				4	25	1			
				1	6.7	0.5			
Therapeutic Services	29-1127	Speech-Language Pathologists	8	2	28.4	0.5	Master's degree	None	None
				1	13.6	0.3			
Therapeutic Services	29-1141	Registered Nurses	102	21	20.1	7.4	Associate's or Bachelor's degree	None	None
				60	59.2	28.9			
				7	7	5.8			
				1	0.9	0.8			
Diagnostic Services	29-2012	Medical & Clinical Lab Technicians	8	4	44.3	1.1	Associate's degree	None	None
				3	41.4	1.3			
				9	97.4	2.8			
Therapeutic Services	29-2021	Dental Hygienists	9	9	97.4	2.8	Associate's degree	None	None
Therapeutic Services	29-2041	Emergency Medical Techs & Paramedics	21	12	55	1.8	Postsecondary non-degree award	None	None
Therapeutic Services	29-2052	Pharmacy Technicians	7	3	15.2	0.7	High school diploma or equivalent	None	Moderate-term on-the-job training
				1	16.2	1			
				10	28.9	3			
Therapeutic Services	29-2061	Licensed Practical Nurses	36	6	16.3	2.3	Postsecondary non-degree award	None	None
				14	39.1	9.1			
				1	1.4	0.4			
Health Informatics	29-2071	Med Records & Health Info Technicians	10	4	35.4	0.9	Postsecondary non-degree award	None	None
				4	37.6	1.3			
				1	8.9	0.5			
				6	9	1.8			
Therapeutic Services	31-1014	Nursing Assistants	71	17	24.4	6.6	Postsecondary non-degree award	None	None
				38	53.9	24.4			
				1	1.9	1			
Health Informatics	31-9011	Massage Therapists	6	1	24.6	0.5	Postsecondary non-degree award	None	None
				1	24.6	0.5			
Therapeutic Services	31-9091	Dental Assistants	10	10	95.4	4.1	Postsecondary non-degree award	None	None
Health Informatics	31-9092	Medical Assistants	19	15	79.7	6.6	High school diploma or equivalent	None	Moderate-term on-the-job training
				2	12.4	1.4			
Health Informatics	31-9099	Healthcare Support Workers, All Other	9	2	22.5	0.3	High school diploma or equivalent	None	Short-term on-the-job training
				3	33.9	0.6			
				1	8.5	0.3			
Health Informatics	35-1012	1st-Line Svcs/Mgrs, Food Prep/Serv **	44	1	1.2	0.2	High school diploma or equivalent	1 to 5 years	None
				1	1.2	0.2			
				1	2.7	0.7			
Health Informatics	43-3011	Bill and Account Collectors**	20	2	11.8	0.6	High school diploma or equivalent	None	Moderate-term on-the-job training
				1	4.6	0.3			
				15	40.6	5.3			
Health Informatics	43-4171	Receptionists & Information Clerks **	37	1	3.7	0.6	High school diploma or equivalent	None	Short-term on-the-job training
				1	2.9	0.8			

INFORMATION TECHNOLOGY

INDUSTRIES FOR PRINCIPAL OCCUPATIONS IN THE NORTHWEST REGION

SOC Code	SOC Title	Average Annual Job Openings	NAICS	DESCRIPTION	Annual Occupational Openings in Industry	2022 Percent of occupation
15-1121	Computer Systems Analysts	18	522	Credit intermediation and related activities	1	4.1
			524	Insurance carriers and related activities	1	8.2
			551	Management of companies and enterprises	1	7.3
			611	Educational services; state, local, and private	1	4.5
			5241	Insurance carriers	1	7.4
15-1131	Computer Programmers	20	5415	Computer systems design and related services	5	28.9
			5416	Management, scientific, and technical consulting services	1	3.9
			9992	State government, excluding education and hospitals	1	3.6
			524	Insurance carriers and related activities	1	3.6
			551	Management of companies and enterprises	1	3.5
15-1132	Software Developers, Applications	17	5112	Software publishers	1	5.4
			5415	Computer systems design and related services	8	40.6
			5613	Employment services	1	3.9
			334	Computer and electronic product manufacturing	1	3.5
			524	Insurance carriers and related activities	1	5.2
15-1133	Software Developers, Systems Software	11	551	Management of companies and enterprises	1	4.3
			5112	Software publishers	1	8.0
			5241	Insurance carriers	1	4.4
			5415	Computer systems design and related services	7	38.9
			5416	Management, scientific, and technical consulting services	1	4.1
15-1142	Network & Computer Sys. Administrators	9	334	Computer and electronic product manufacturing	1	10.8
			423	Merchant wholesalers, durable goods	0	3.7
			5112	Software publishers	1	6.9
			5413	Architectural, engineering, and related services	0	4.5
			5415	Computer systems design and related services	4	37.8
15-1151	Computer User Support Specialists	17	5416	Management, scientific, and technical consulting services	1	4.9
			5417	Scientific research and development services	0	3.5
			517	Telecommunications	0	3.9
			524	Insurance carriers and related activities	0	4.4
			551	Management of companies and enterprises	0	5.2
15-1151	Computer User Support Specialists	17	611	Educational services; state, local, and private	1	10.4
			5415	Computer systems design and related services	2	18.8
			5416	Management, scientific, and technical consulting services	0	3.5
			423	Merchant wholesalers, durable goods	1	5.2
			551	Management of companies and enterprises	1	4.4
15-1151	Computer User Support Specialists	17	611	Educational services; state, local, and private	2	12.7
			5112	Software publishers	1	4.3
			5415	Computer systems design and related services	4	24.6
			5613	Employment services	1	3.6

MANUFACTURING

NORTHWEST REGION EDUCATIONAL SUPPLY DATA – TOP OCCUPATIONS WITH OPENINGS IN COMBINED INDUSTRIES

Occupation	Program Code (CIP)	Program Title	FY 2014 Completers	Degree Type	WIOA Eligible Training Providers
Machinists** Computer-Controlled Machine Tool Operators**	48.0501	Machine Tool Technology			
	Community Colleges	IL Valley CC	4	< 1 Yr Cert	Black Hawk College-Machine Tool
	48.0503	Mach Shop Technology			
	Community Colleges	IL Valley CC	4	< 1 Yr Cert	
Team Assemblers	No Related Program of Study for This Occupation				
Food Batchmakers	No Related Program of Study for This Occupation				

Notes: Highland Community College overlaps with the Northern Stateline EDR

Notes: ** denotes occupations which occur in multiple clusters/pathways

TRANSPORTATION, DISTRIBUTION & LOGISTICS					
NORTH CENTRAL REGION EDUCATIONAL SUPPLY DATA -- TOP OCCUPATIONS WITH OPENINGS IN COMBINED INDUSTRIES					
Occupation	Program Code (CIP)	Program Title	FY 2014 Completers	Degree Type	WIOA Eligible Training Providers
Truck Drivers, Heavy & Tractor Trailer**	49.0205	Truck/Bus Driver/Comm'l Vehicle Oper			
		IL Valley CC	68	< 1 Yr Cert	IL Valley CC
Truck Drivers, Light & Delivery Services	Community Colleges	Sauk Valley CC	8	< 1 Yr Cert	Sauk Valley CC
				School Bus Drivers	
Shipping, Receiving, & Traffic Clerks**					
No Related Program of Study for This Occupation					

Notes: Highland Community College overlaps with the Northern Stateline EDR
 Notes: ** denotes occupations which occur in multiple clusters/pathways

HEALTH CARE						
NORTHWEST REGION EDUCATIONAL SUPPLY DATA -- TOP OCCUPATIONS WITH OPENINGS IN COMBINED INDUSTRIES						
Occupation	Program Code (CIP)	Program Title	FY 2014 Completers	Degree Type	WIOA Eligible Training Providers	
Registered Nurses	51.3801	Registered Nursing				
		Black Hawk College	63	Associate	IL Valley CC	
		Highland CC	44	Associate	Sauk Valley CC	
	Community Colleges	IL Valley CC	57	Associate	Trinity Coll of Nursing/Hth Sciences	
		Sauk Valley CC	36	Associate		
	Other Colleges	Trinity Coll of Nursing/Hth Sciences		13	Associate	
				35	Bachelor	
Nursing Assistants	51.3902	Nurse Aide				
		Black Hawk College	93	< 1 Yr Cert	Black Hawk College	
	Community Colleges	IL Valley CC	303	< 1 Yr Cert	IL Valley CC	
		Sauk Valley CC	185	< 1 Yr Cert	Sauk Valley CC	
					Midwest Technical Institute	
Receptionists & Information Clerks **	52.0406	Receptionist	No Programs in this EDR			
	51.3901	Licensed Practical Nurse				
Licensed Practical Nurses	Community Colleges	Black Hawk College	30	1-2 Yr Cert	Black Hawk College	
		Highland CC	4	1-2 Yr Cert	IL Valley CC	
		IL Valley CC	21	1-2 Yr Cert	Sauk Valley CC	
	Sauk Valley CC	16	1-2 Yr Cert			
Emergency Medical Techs & Paramedics	51.0904	Emergency Med Technology				
				7	1-2 Yr Cert	
		Black Hawk College		4	Associate	
		Highland CC		1	Associate	
		IL Valley CC		4	1-2 Yr Cert	
		Sauk Valley CC		6	1-2 Yr Cert	
		Other Colleges		1	Associate	

Notes: Highland Community College overlaps with the Northern Stateline EDR

Notes: ** denotes occupations which occur in multiple clusters/pathways

Northwest Economic Development Region - Illinois Community College System Fiscal Year 2014 Summary of Career and Technical Education Degree and Certificate Graduates					
Dist. No.	College	Associate in Applied Science	Certificates of One Year or More	Certificates of Less Than One Year	Total
503	Black Hawk	258	128	189	575
519	Highland	110	29	63	202
513	Illinois Valley	160	75	529	764
506	Sauk Valley	120	29	528	677
Northwest Total		648	261	1,309	2,218
State Total		11,555	6,876	28,142	46,573
% of State Total		5.6%	3.8%	4.7%	4.8%

Illinois Community College System

More detailed curriculum-level data about Illinois Community College System students and graduates are available through the ICCB Databook (Table III-3 and Table III-9).

ICCB Databook - <http://iccbdsrv.iccb.org/databook/home.cfm>

Source of Data: ICCB Centralized Data System

Northwest Economic Development Region - Illinois Community College System Fiscal Year 2014 Summary of Transfer and General Studies Degree and Certificate Graduates										
Dist. No.	College	Associate in Arts	Associate in Science	Associate in Arts and Science	Associate of Arts in Teaching	Associate in Engineering Science	Associate in Fine Arts	Associate in Liberal Studies & General Ed	Gen Studies Certificates	Total
503	Black Hawk	256	152	0	0	0	0	1	0	409
519	Highland	90	84	0	1	8	0	11	0	194
513	Illinois Valley	97	234	0	4	0	0	16	0	351
506	Sauk Valley	39	122	0	0	1	1	9	0	172
Northwest Total		482	592	0	5	9	1	37	0	1,126
State Total		11,569	6,952	642	13	217	131	3,706	9	23,239
% of State Total		4.2%	8.5%	0.0%	38.5%	4.1%	0.8%	1.0%	0.0%	4.8%

Northwest Economic Development Region - Illinois Community College System
Fiscal Year 2014 Summary of Unduplicated Headcount Enrollment by Program Classification

Dist. No.	College	Bacc / Transfer	Vocational	Career and Technical Ed.	*ABE	*ASE	*ESL	General Studies	General Associates	Total	**Noncredit Total
503	Black Hawk	4,822	1,541	3,313	476	298	914	1	74	11,439	3,456
519	Highland	2,620	129	667	126	77	35	709	76	4,439	406
513	Illinois Valley	2,738	0	2,306	229	115	166	570	179	6,303	3,334
506	Sauk Valley	2,296	187	1,245	100	81	82	0	12	4,003	539
Northwest Total		12,476	1,857	7,531	931	571	1,197	1,280	341	26,184	7,735
State Total		287,076	70,776	172,630	27,441	11,382	36,994	2,789	50,624	659,712	193,812
% of State Total		4.3%	2.6%	4.4%	3.4%	5.0%	3.2%	45.9%	0.7%	4.0%	4.0%

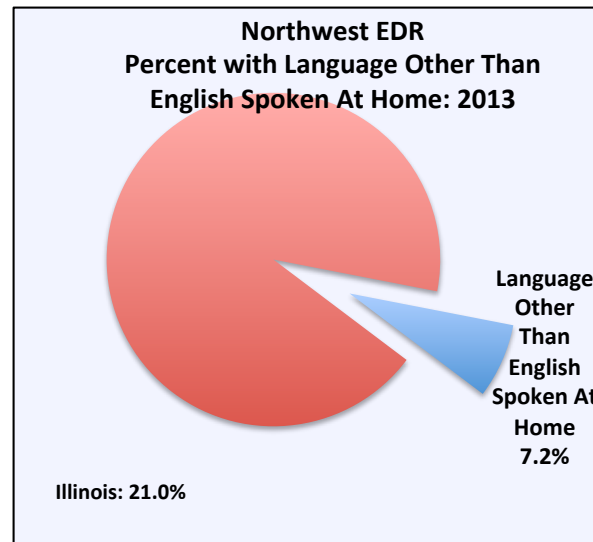
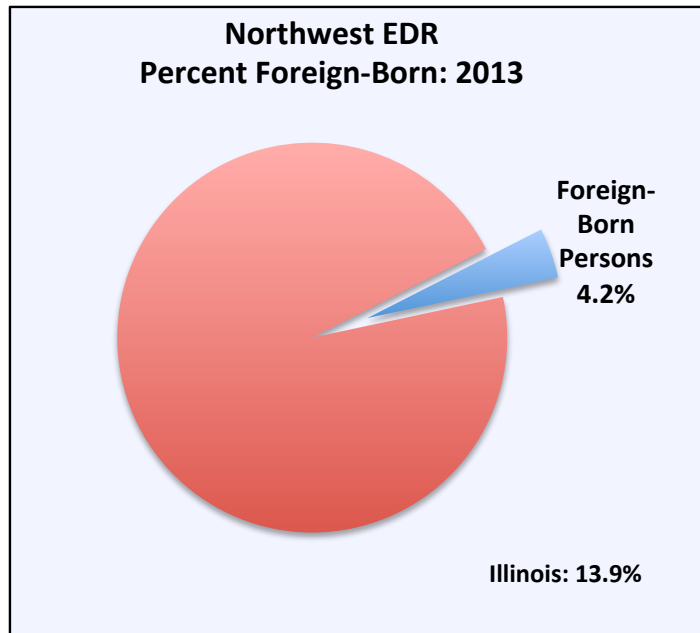
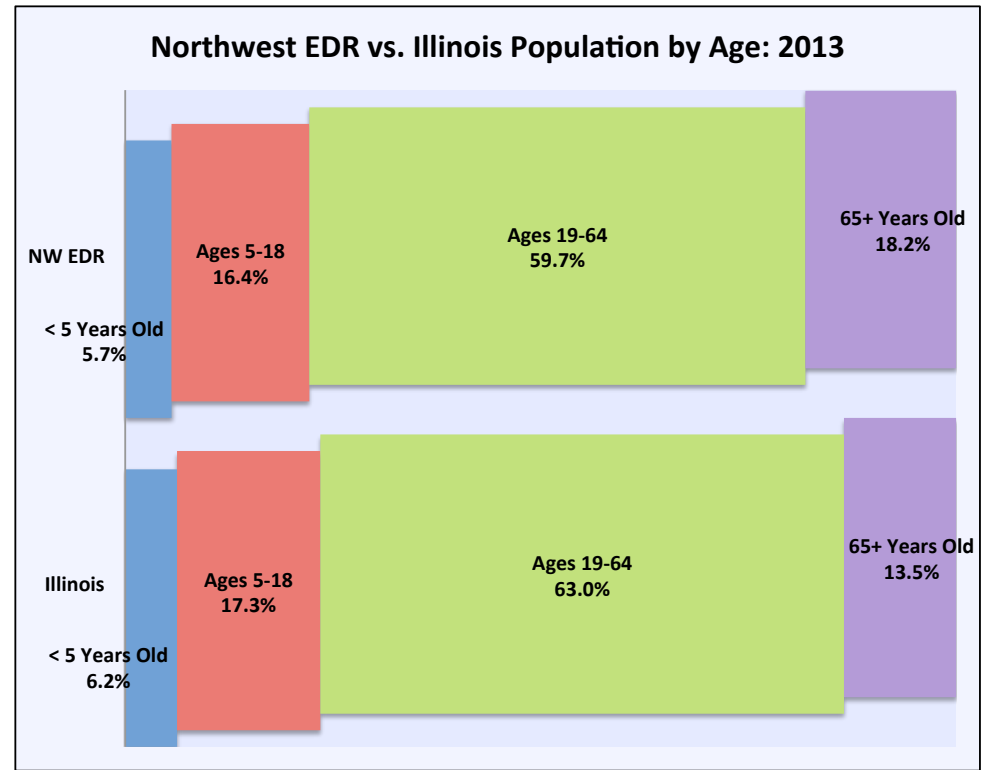
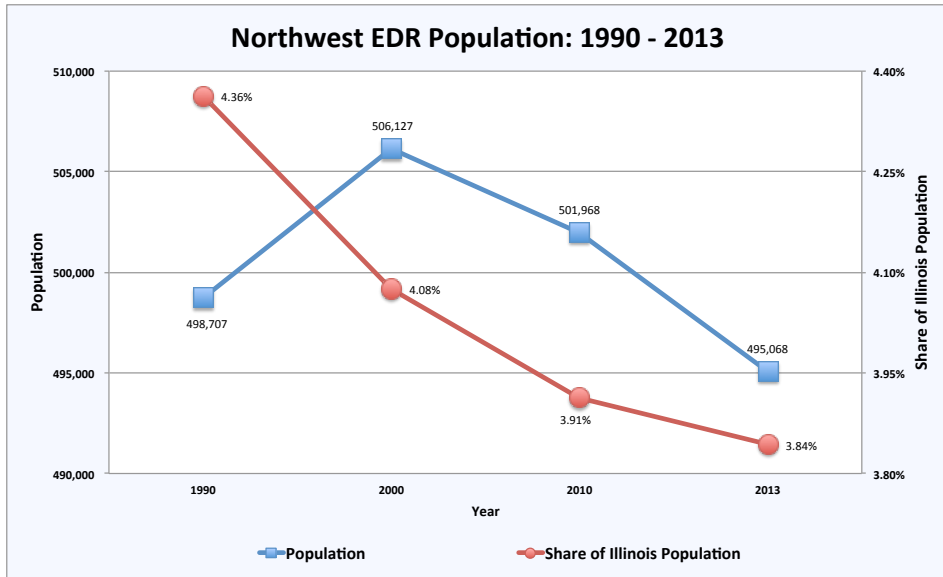
*ABE = Adult Basic Education; ASE = Adult Secondary Education; ESL = English-as-a-Second Language.

** Noncredit instruction provides activities that do not meet ICCB Rules for credit courses, such as those designed for specific employers, professional development, or others offered for hobby, leisure, or recreational purposes.

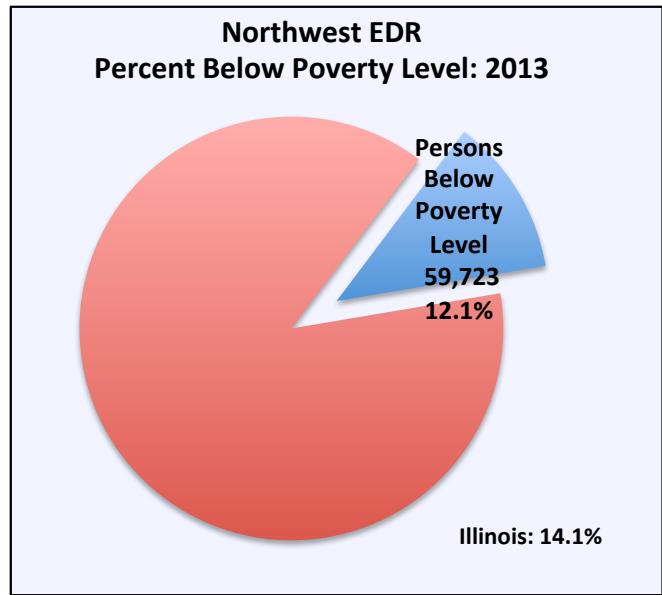
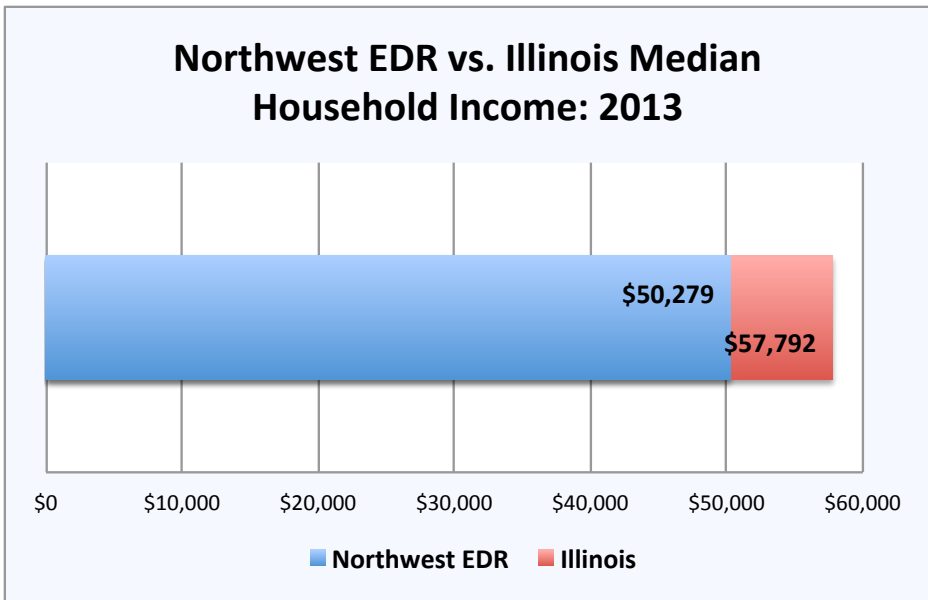
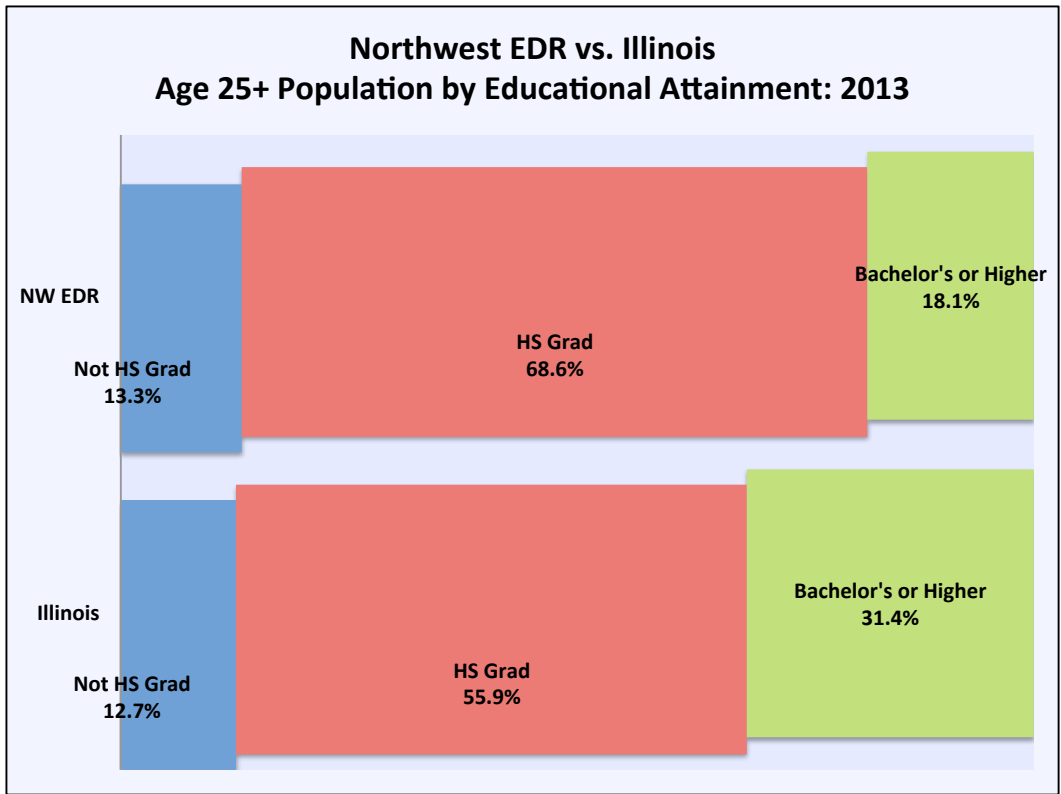
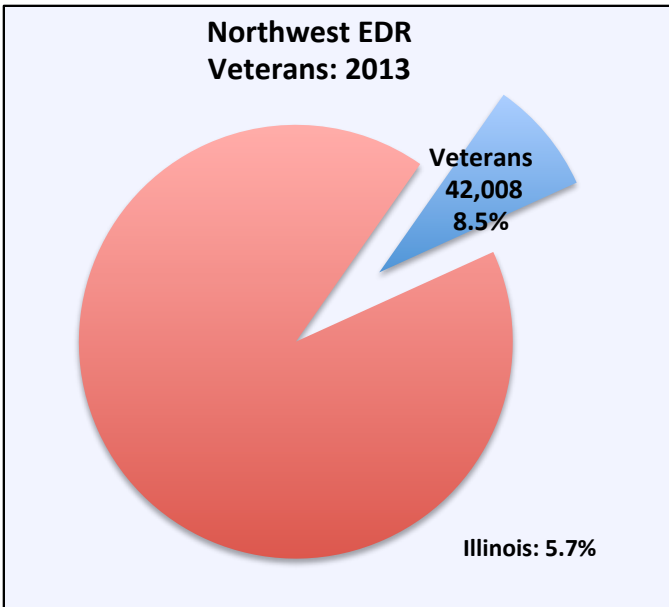
Northwest Economic Development Region - Illinois Community College System
Fiscal Year 2014 Summary of Graduates by Career Cluster

Dist. No.	College	Agriculture, Food, & Natural Resources	Architecture & Construction	Arts, A/V Technology & Communications	Business Management & Administration	Education & Training	Finance	Government & Public Administration	Health Science	Hospitality & Tourism	Human Services	Information Technology	Law, Public Safety, Corrections & Security	Manufacturing	Marketing	Science, Technology, Engineering & Mathematics	Transportation, Distribution & Logistics	Other	Total*
503	Black Hawk	106	13	9	30	274	4	0	272	0	11	8	10	48	17	147	18	0	967
519	Highland	6	8	5	23	102	0	0	69	0	11	6	0	28	0	92	35	0	385
513	Illinois Valley	2	79	8	23	119	0	0	437	0	9	8	26	42	2	234	100	0	1,089
506	Sauk Valley	0	12	18	78	48	0	0	294	0	23	24	79	106	3	123	8	0	816
Northwest Total		114	112	40	154	543	4	0	1,072	0	54	46	115	224	22	596	161	0	3,257
State Total		935	2,893	815	3,098	16,744	27	0	18,294	1,729	2,109	2,396	2,918	2,799	331	6,691	5,964	18	67,761
% of State Total		12.2%	3.9%	4.9%	5.0%	3.2%	14.8%	0.0%	5.9%	0.0%	2.6%	1.9%	3.9%	8.0%	6.6%	8.9%	2.7%	0.0%	4.8%

*Career Cluster graduates limited to three credentials within fiscal year 2014. Thus, Career Cluster graduate totals may be slightly less than previous graduate table totals.



Source for all Information on this Page: US Census Bureau Annual County Resident Population Estimates for 2013



Source for all Information on this Page: US Census Bureau Annual County Resident Population Estimates for 2013

NORTHWEST REGION

SELECTED TARGET POPULATION CHARACTERISTICS

Unemployed	Labor Force	250,739
	Employed	232,604
	Unemployed	18,135
	Rate	7.2
TANF	Annual 2014	46,851
	Monthly Average	3,904
	Corrections	5,822
Persons with Disabilities	Mental Disabilities	69
	Adults with Disabilities	40,176
Public Aid	Public Aid Recipients	130,314
	Adult Public Aid Recipients	68,448