





# Career Transitions

Making the change to a new career pathway.



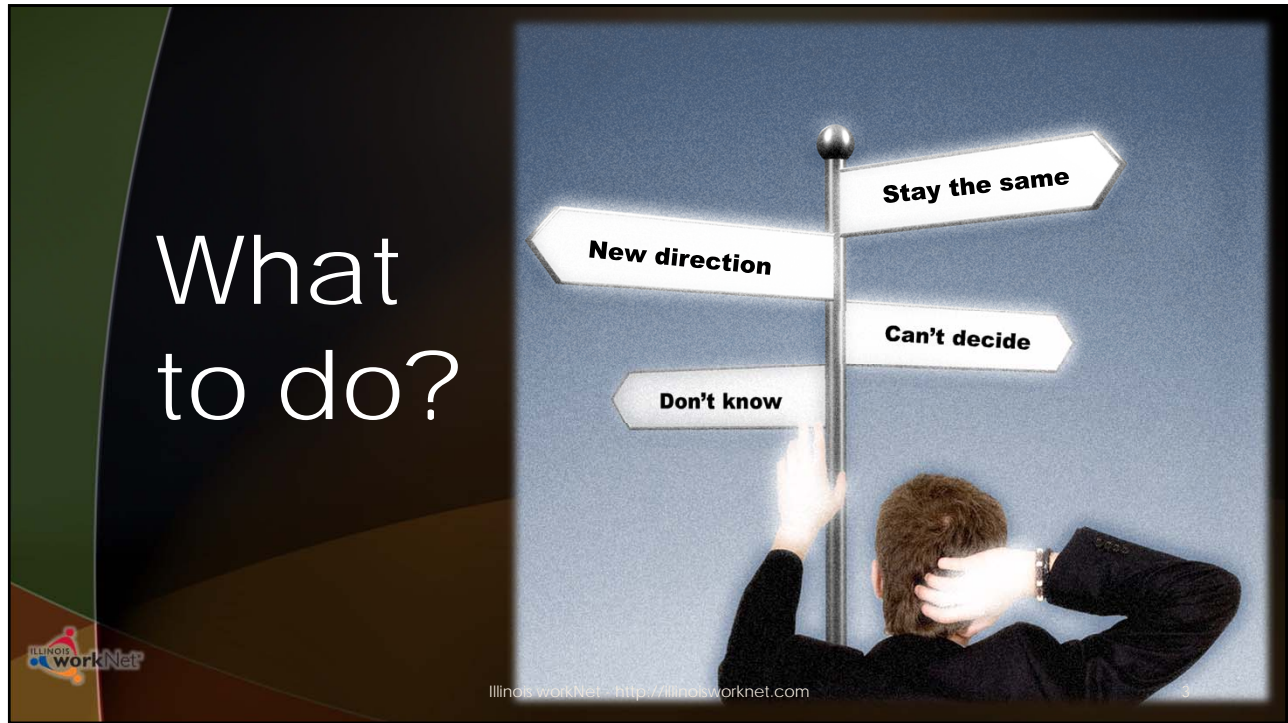
Career Transitions by Illinois workNet is licensed under a [Creative Commons Attribution-Non-Commercial 4.0 International License](https://creativecommons.org/licenses/by-nc/4.0/)

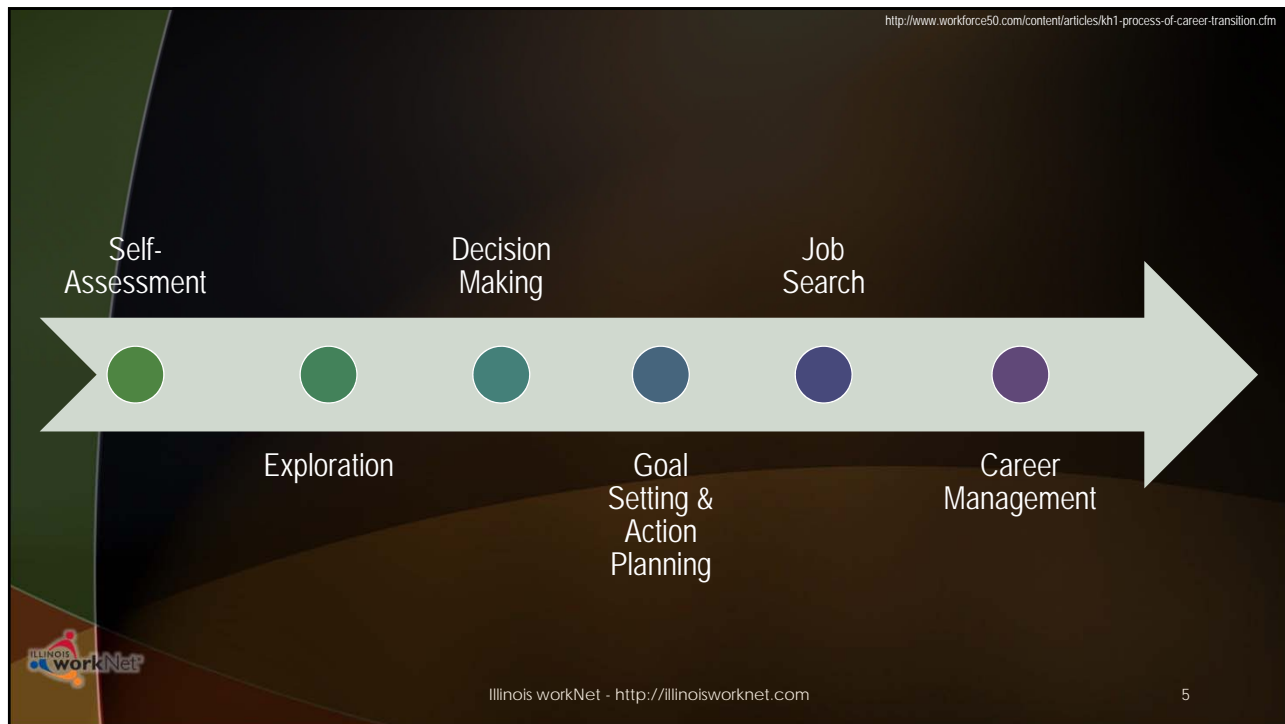
## What is your Plan?



Illinois workNet - <http://illinoisworknet.com>

2





## Reach Your Career, Training & Employment Goals

Get started with user guides:

Get Started In This Site

Find the Right Job

Find Training

Find Laid Off Worker Resources

Fill Job Openings

ILLINOIS workNet

Illinois workNet - <http://illinoisworknet.com>

6

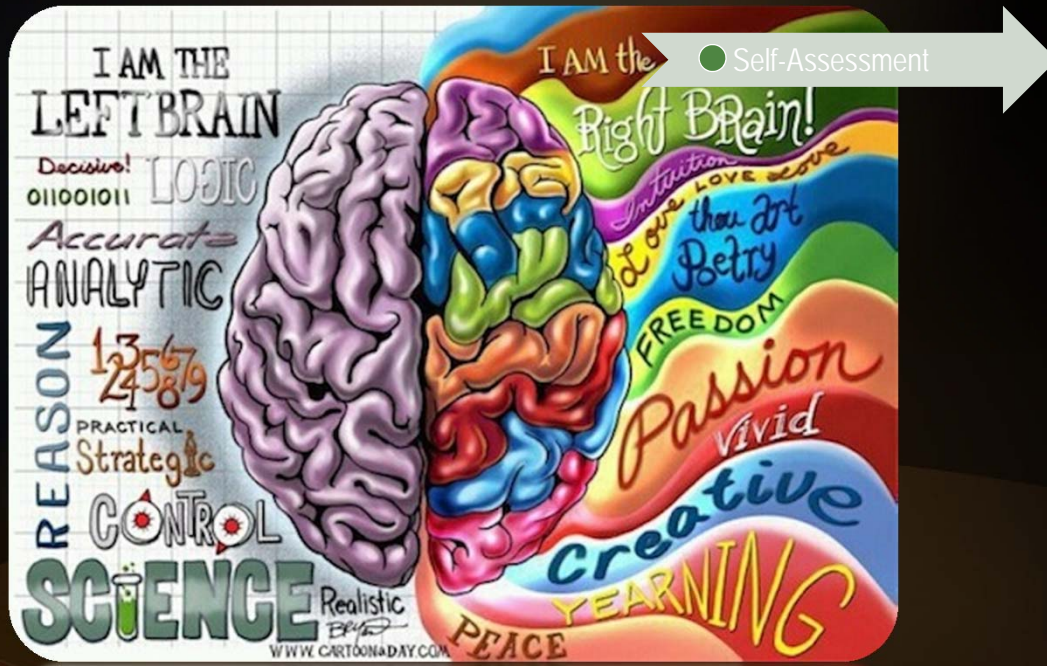
# Two Options



## Employment 101



Illinois workNet - <http://illinoisworknet.com>



Illinois workNet - <http://illinoisworknet.com>

● Self-Assessment

ILLINOIS workNet

Illinois workNet - <http://illinoisworknet.com>

9

● Self-Assessment

**Career Cluster Inventory**

Rate 80 activities as like very much, like, or not like.  
**Results:** Provides a graph indicating how you rate up to each career cluster area.

Duration: 5-25 minutes

**Interest Profiler**

There are 180 activities. Choose if you like, dislike, or don't know for each activity.  
**Results:** Organizes interests into 6 categories of interest.

Duration: 10-20 minutes

**SKILLS Profiler**

Select 35 skills and group them as very important, important, or not important.  
**Results:** Lists top 30 occupations that match your skills. Calculates Holland Personality Type.

Duration: 10-20 minutes

**Work Importance Locator**

Group 20 statements based on how important the work aspect is to you.  
**Results:** Provides scores for 6 work values and occupations for each work value.

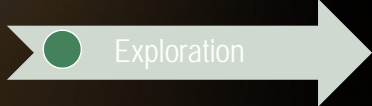
Duration: 5-15 minutes

ILLINOIS workNet

Illinois workNet - <http://illinoisworknet.com>

10

# What do I want to do?



AGRICULTURE, FOOD, AND NATURAL RESOURCES  
Agriculture, Food, and Natural Resources



ARCHITECTURE AND CONSTRUCTION  
Architecture and Construction



FINANCE  
Finance



HEALTH SCIENCE  
Health Science



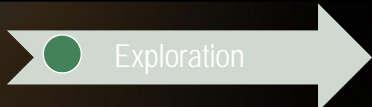
INFORMATION TECHNOLOGY  
Information Technology



MANUFACTURING  
Manufacturing



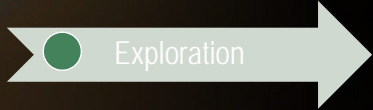
TRANSPORTATION, DISTRIBUTION, AND LOGISTICS  
Transportation, Distribution, and Logistics



<https://www2.illinoisworknet.com/DownloadPrint/TransferableSkillschecklistFINAL.doc>



# Get a Quick Tune-Up



Security and Privacy

Computer or Mobile Device

Software and Apps

Online

Networking and Cloud Technologies



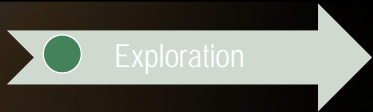
Leadership

Team Work

Communication

Problem-Solving

Strategic Thinking



Illinois workNet  
Job Skills Guide

Workplace "Soft Skills"

Exploration

 Attendance and Self-Presentation	 Career Advancement	 Communications
 Independence and Initiative	 Leadership and Teamwork	 Positive Attitude
 Problem Solving	 Understand the Big Picture	 Work Ethic


Illinois workNet - <http://illinoisworknet.com>

15

How to Find Your Skills

Exploration


1. Reflect on past jobs, volunteer activities, training experiences.
2. List academic, technical, and soft skills that were used.
3. Use these skills as keywords to update your resume, job applications, LinkedIn profile, etc.



Illinois workNet - <http://illinoisworknet.com>


16





What shall I do?


Decision Making




Illinois workNet - <http://illinoisworknet.com>

17

Going down a new road?

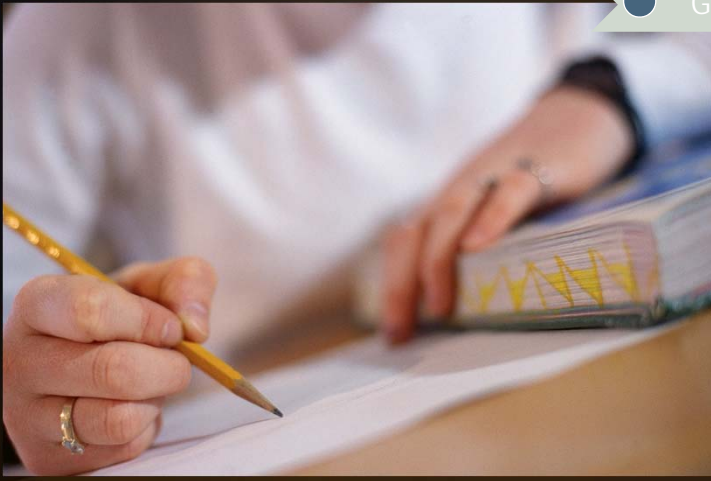


Goal Setting



Illinois workNet - <http://illinoisworknet.com>

18



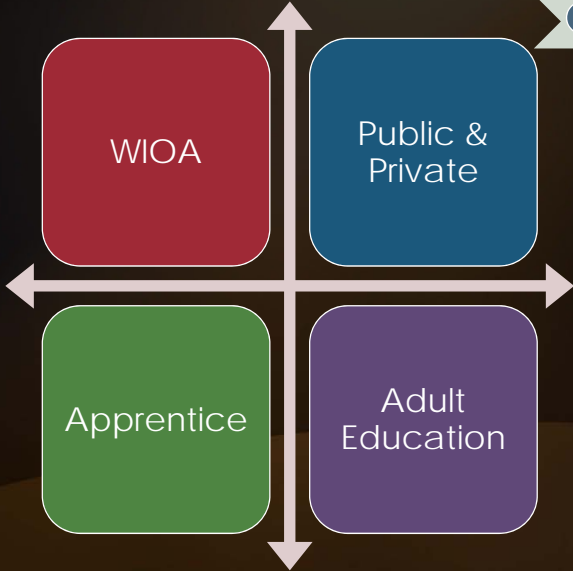
Goal Setting

ILLINOIS workNet

Illinois workNet - <http://illinoisworknet.com>

19

Training Options



WIOA

Public & Private

Apprenticeship

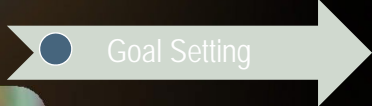
Adult Education

Goal Setting

ILLINOIS workNet

Illinois workNet - <http://illinoisworknet.com>

20

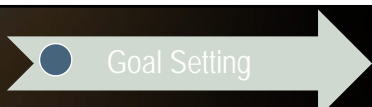


Start your own Business.



Illinois workNet - <http://illinoisworknet.com>

21



[www.illinoisworknet.com/startup](http://www.illinoisworknet.com/startup)



Illinois workNet - <http://illinoisworknet.com>

22

## Thank You for Attending



- ▶ Watch for the news item about this webinar on [www.illinoisworknet.com](http://www.illinoisworknet.com)
- ▶ Watch for information on our upcoming webinars on our social media links:



- ▶ Email us at:  
[info@illinoisworknet.com](mailto:info@illinoisworknet.com)



Sponsored by the Illinois Department of Commerce and Economic Opportunity (DCEO) Illinois workNet - <http://illinoisworknet.com>

23