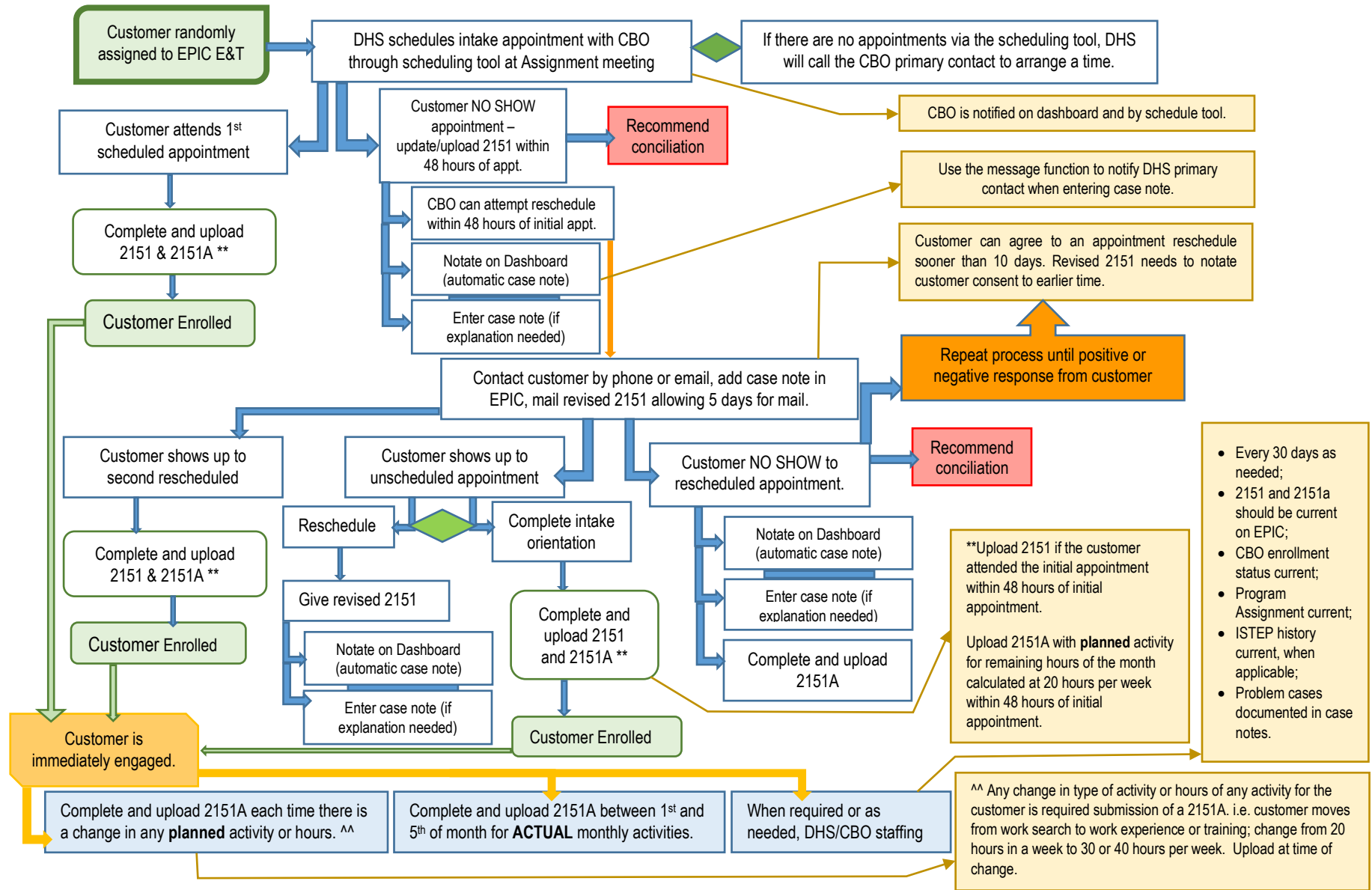


EPIC Program – Process after Customer has been Randomly Assigned to EPIC Program and Initial Intake into CBO – VOLUNTARY Participants



- Every 30 days as needed;
- 2151 and 2151a should be current on EPIC;
- CBO enrollment status current;
- Program Assignment current;
- ISTEP history current, when applicable;
- Problem cases documented in case notes.

**Upload 2151 if the customer attended the initial appointment within 48 hours of initial appointment.
Upload 2151A with **planned** activity for remaining hours of the month calculated at 20 hours per week within 48 hours of initial appointment.

^^ Any change in type of activity or hours of any activity for the customer is required submission of a 2151A. i.e. customer moves from work search to work experience or training; change from 20 hours in a week to 30 or 40 hours per week. Upload at time of change.



Funding for research provided by United State Department of Agriculture (USDA). USDA is an equal opportunity employer and provider.



Illinois Department of Commerce & Economic Opportunity
OFFICE OF EMPLOYMENT & TRAINING
Bruce Rauner, Governor

