



ETPL in IWDS 2.0: Development, Policy and Access

Module 1 — May 27th, 2026

Welcome to the first module of the IWDS 2.0 ETPL Virtual Training Series. This session covers system development background, updated policy, and what providers and coordinators need to know before the July 1, 2026, launch.

Recording Notice

The Illinois Department of Commerce and Economic Opportunity (DCEO) allows for the recording of audio, visuals, participants, and other information sent, verbalized, or utilized during business-related meetings. This meeting is scheduled to be recorded by DCEO.

- ☐ Your participation in this meeting without expressing an objection to recording will be treated as consent. Any participant who prefers to participate via audio only should disable their video camera so only their audio will be captured.

Virtual Meeting Guidelines

1 Minimize Background Sounds

- 1** Mute your phone or computer microphone when you are not speaking to keep the session clear and focused for all participants.

2 Be Present

- 2** Use the "Raise Hand" reaction to indicate you'd like to speak aloud. Wait until you're called on. Stay engaged and minimize distractions during the session.

3 Engage Everyone

- 3** Turn on your camera if you feel comfortable doing so. Put any questions in the Q&A and comments in the chat so everyone can benefit from the discussion.

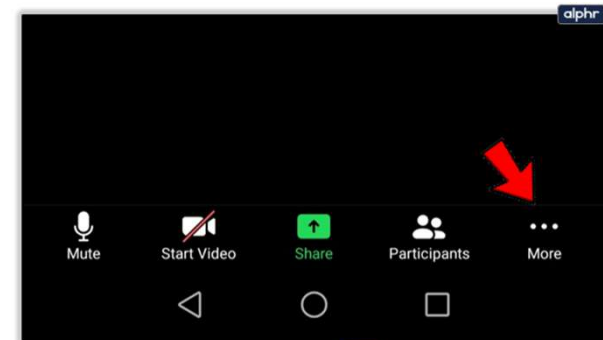


Please use the Q&A feature for questions!



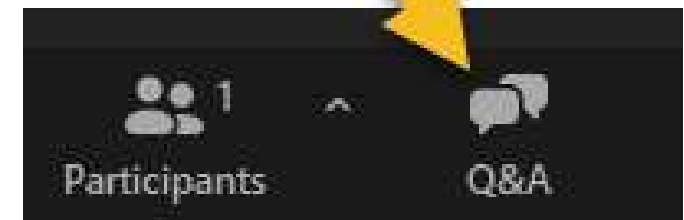
Step 1:

To locate the Q&A feature, click on the "More" icon on the toolbar the bottom of your screen



Step 2:

Then select "Q&A" - this will place the Q&A feature on the toolbar for easy access.



Today's Webinar Support



Sarah Blalock

Technical Assistance Manager
Office of Employment and Training
Illinois Department of Commerce and Economic
Opportunity



Kelly Trimble

Outreach Manager – IWDS 2.0 Transition
Southern Illinois University – Carbondale

OET Staff Introduction



Mark Burgess

Performance Unit Manager
Office of Employment and Training
Illinois DCEO



Paula Barry

Performance Specialist
Office of Employment and Training
Illinois DCEO



Ramon 'Ray' Al-Amin

Statistical Research Technician
Office of Employment and Training
Illinois DCEO

SIU Staff Introduction



Al Menke

Project Manager – IWDS Transition
Southern Illinois University -
Carbondale

Today's Agenda

01

Welcome & Introductions

02

IWDS 2.0 Development

03

ETPL Policy Updates

04

IWDS 2.0 Access

05

Question & Answer and Closing

Chat Storm

We want to hear from you! In the chat, please share:

Your Name

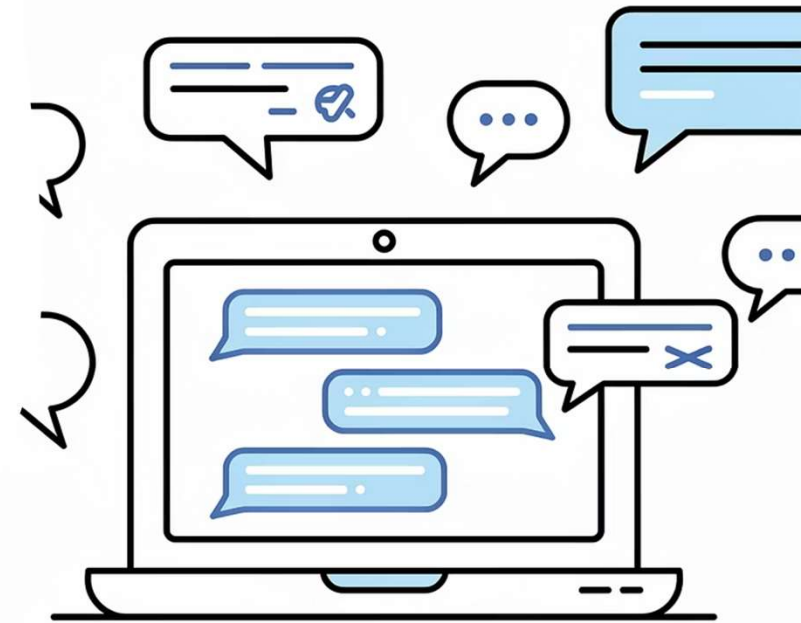
Introduce yourself so the group knows who's in the room today.

Your LWIA

Let us know which Local Workforce Innovation Area you're representing.



What are you most excited to explore in IWDS 2.0?



Who Should Attend?



Eligible Training Providers (ETPs)

Staff responsible for managing training programs and submitting ETPL-related information in IWDS 2.0. This includes designated Provider "Contacts" who receive system notifications and correspondence.




LWIB ETPL Coordinators

Local staff overseeing provider eligibility, preliminary application review, and the recommendation and approval processes at the local workforce innovation board level.



State ETPL Coordinators

State staff responsible for statewide ETPL oversight, final eligibility determinations, policy implementation, and federal reporting to USDOL.

 Some sessions are tailored specifically for coordinators, while others are intended for all audiences. Please review individual session descriptions for details.

IWDS 2.0 ETPL Virtual Training Series Overview

This multi-session virtual training series prepares Eligible Training Providers, Local Workforce Innovation Boards, and ETPL Coordinators for the full implementation of IWDS 2.0. Each module builds on the last to ensure participants are confident and capable.

Policy Updates

ETPL policy changes, new requirements, and updated provider and coordinator responsibilities.

System Access

How to log in, navigate, and use IWDS 2.0 for provider and program management tasks.

Eligibility Determination

Updated processes for initial and continued eligibility, including application review workflows.

Performance Reporting

New requirements to report on **all** students — not just WIOA-funded — including data submission guidance.

- ☐ Sessions include high-level overviews of key changes, in-depth policy and process review, and hands-on demonstrations to ensure users can confidently complete ETPL-related tasks in IWDS 2.0.

IWDS 2.0 Development

The Illinois Department of Commerce and Economic Opportunity (DCEO), through the Office of Employment and Training (OET), is partnering with the Illinois workNet (IwN) team to build IWDS 2.0 – a modern replacement for the current IWDS platform.



System of Record — Starting July 1, 2026

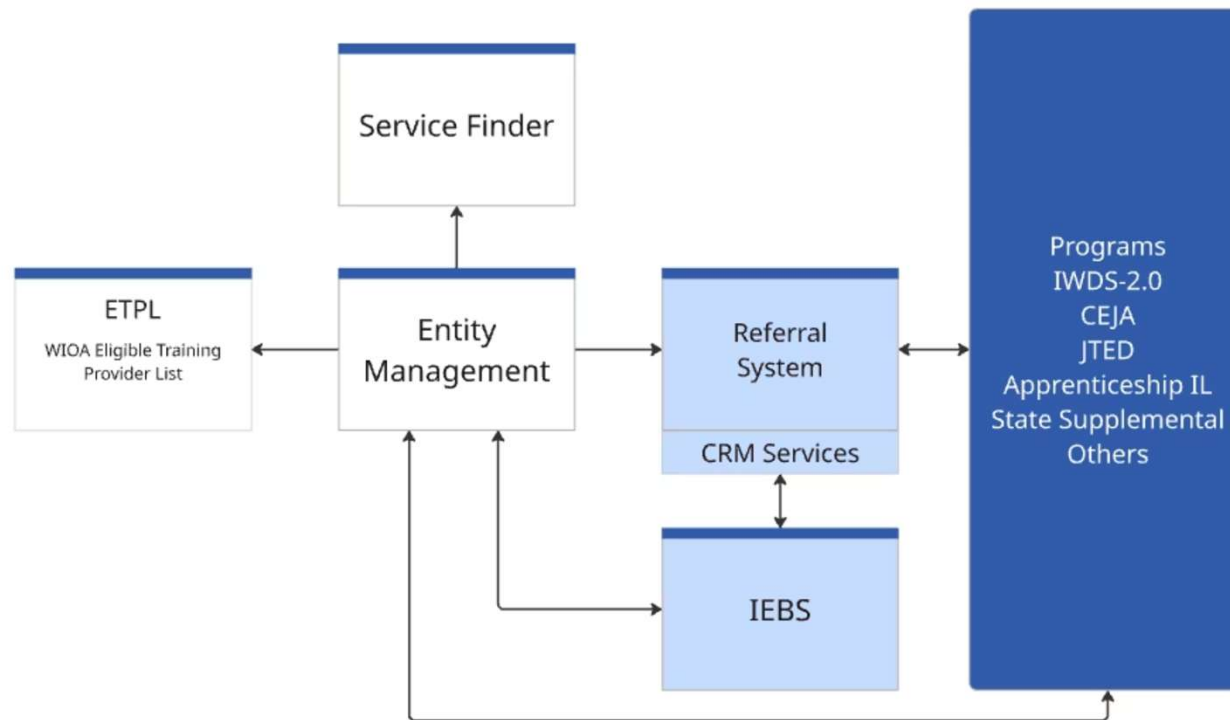
IWDS 2.0 will become the official system of record for all WIOA Title I programs, including ETPL.

Modern, User-Friendly Interface

Built with accessibility and responsive design standards, IWDS 2.0 focuses on an ideal customer workflow to meet federal and state reporting and case management requirements for Title I and Trade data.

Illinois workNet as an Enterprise System

Illinois workNet serves as the integrated enterprise platform connecting ETPL, entity management, referral systems, and multiple workforce programs. The diagram below illustrates how these components interact across the broader system architecture.



The ETPL module connects directly to Entity Management, which links to the Service Finder, Referral System, IEBS, and a suite of programs including IWDS 2.0, CEJA, JTED, Apprenticeship IL, and State Supplemental programs.

IWDS 2.0 Development

How the System Was Built and How You Can Stay Informed

Discovery & Development Process

- Weekly Subject Matter Expert (SME) meetings to align system features with policy and workflow needs
- User Acceptance Testing (UAT) to validate functionality before launch
- Active engagement with State and Local ETPL Coordinators throughout development

ETPL Policy Updates

System functionality directly incorporates changes to ETPL policy, ensuring the platform reflects current requirements from day one.

State ETPL Training Resources

- **WIOA Wednesday Webinars** — ongoing live training sessions
- Recorded sessions housed on the **IWDS Transition Page** in Illinois workNet under "IWDS ETPL Training"

ETPL Policy Updates

What You Need to Know About the Upcoming Policy Release



When Will Policy Be Released?

Policy will be released soon. This webinar provides an overview of key changes. The Notice and Performance Reporting Guide are being released **May 27, 2026**.



What Has Been Updated?

- Provider Responsibilities
- ETP Application Review Process
- Performance Reporting Requirements



Where Can I Find the Policy?

Distributed via email to system stakeholders and posted to the **WIOA ePolicy Portal, Chapter 7** at
<https://apps.illinoisworknet.com/WIOAPolicy/Policy/Home>

ETPL Policy Updates:

Training Provider Responsibilities

→ **Learn and Access IWDS 2.0**

All providers – initial and continued – must submit applications through IWDS 2.0. **In-State providers** (located in Illinois) submit to the LWIB/LWIA. **Out-of-State/Virtual (Online-Only)** providers submit directly to the State. **Registered Apprenticeship Programs (RAPs)** always submit to the State regardless of location.

→ **Maintain Data Integrity**

Providers must keep IWDS 2.0 updated with any changes to their information. Document uploads (sources, credentials, etc.) must be current, accurate, and verifiable at all times.

→ **Confirm WIOA Compliance**

Providers must confirm they fully comply with all ETPL provisions of WIOA as outlined in Policy Chapter 7. Compliance is required for both initial approval and continued eligibility.

ETPL Policy Updates: Training Providers

What to Expect

The following outlines the notification and communication process providers can expect once applications are submitted in IWDS 2.0. Keeping contact information current is essential.

45-Day Determination Window

Providers will be notified of their training program eligibility determination within **45 days** of submittal. Plan accordingly when submitting near expiration deadlines.

Email Notifications to Provider Contact

The designated Provider "Contact" will receive email notifications when: an ETPL Coordinator requests information or clarification; the provider and/or program is approved (initial or continued); or the provider and/or program is denied or revoked.



It is essential that provider contact information is kept up to date in IWDS 2.0. Missed notifications may impact eligibility status. Details and further assistance will be provided in future training sessions.

ETPL Policy Updates:

Local Roles and Responsibilities



Designate an ETPL Coordinator

Each LWIB must designate one or more LWIB ETPL Coordinators responsible for overseeing the local review process and ensuring timely action within the 30-day review window.



Conduct Preliminary Review

Coordinators perform the preliminary review of In-State provider applications, tracking the 30-day review window, and making recommendations for approval or denial of entities and training programs to the State.



Follow ETPL Policy Standards

Reviews must be based on State ETPL criteria – not local preferences. This includes verifying entity authorizations, training program documentation, DOTL, ONet/SOC codes, WIOA Recognized Credentials, and US DOL TEN 25-19 compliance.

ETPL Policy Updates:

State Roles and Responsibilities



Final Eligibility Determination

The State makes final eligibility determinations for **all** training providers and programs, including those reviewed locally by LWIBs.



Develop and Maintain the State ETPL

The State oversees the development and ongoing maintenance of the statewide list of eligible training providers and programs, verifying accuracy of information before programs are added.



Enforce Standards and Remove Non-Compliant Providers

The State removes providers and programs that fail to meet eligibility criteria or performance levels, and takes enforcement action against providers that intentionally submit inaccurate information or violate WIOA requirements.

ETPL Policy Updates:

State Roles and Responsibilities

Disseminate the ETPL Publicly

The State disseminates the list of eligible providers and programs – along with performance and cost information – to the public and LWIBs statewide. The format must facilitate comparisons, be searchable, user-friendly, and easily understood by individuals seeking training information.

Require LWIB Record-Keeping

LWIBs must maintain sufficient records and make those records available for monitoring or audit by the State or the U.S. Department of Labor (USDOL) as required.

Federal Reporting — ETA 9171

The State is required to report all Eligible Training Provider List required data elements to USDOL/ETA Form 9171 annually, ensuring Illinois remains in compliance with federal accountability standards.

Summary of Policy Updates

Application Requirements

All providers must submit applications using IWDS 2.0. No exceptions – the system transition affects all initial and continued eligibility submissions.

Who Reviews Applications?


State reviews Out-of-State, Online-Only, and RAP applications. LWIA coordinators review In-State applications and make recommendations. State has final approval authority.

Provider Responsibilities

Maintain current provider and program information. ETPL approval does not guarantee student program approval – providers must set reasonable expectations with prospective students.

Performance Reporting

Report performance on **ALL** students – not just WIOA-funded. Failure to submit all-student data may result in removal from ETPL. Attend **Module 5 on June 24th** for full details.

 Attend ETPL Virtual Training Module 2 on June 3rd for in-depth guidance on application submissions in IWDS 2.0.

IWDS 2.0 ETPL Transition Timeline

IWDS BLACKOUT PERIOD — JUNE 26–30, 2026

- ⊗ **Important Blackout Period:** No system access is available June 26–30, 2026. Please plan all submissions, messages, and provider outreach around this period. There will be no exceptions or workarounds during this time.

Provider Checklist

- Pending applications can be submitted now
- Applications received Post-May 15 have no guarantee review and approval will be completed by the June 25, 2026 blackout period
- Finish all IWDS 1.0 work by **June 25, 2026**
- **Plan ahead for the Blackout Period**
- **Join Modules 2 and 5 for your continued learning**

Coordinator Checklist

- Inform all Eligible Training Providers of the IWDS 2.0 transition plan
- Monitor and assist Providers with current or new applications
- Provide reminders to Providers about the June 26–30 blackout period
- Track August 31 review progress and report system issues to OET

For questions, training resources, and recorded sessions, visit the IWDS Transition Page on Illinois workNet under "IWDS ETPL Training." Additional module sessions are scheduled through June 2026.

IWDS 2.0 Transition

Post-Launch Requirement: Update Provider & Program Information

Providers whose applications are approved before July 1st

- Log in to IWDS 2.0 and verify that your provider and training program information (e.g., certification/entity characteristics) transferred correctly.
- Complete this between **July 1 and August 31, 2026**.

Training programs with eligibility expiration dates **after August 31**

- Providers must review and update programs and provider information, if needed, between July 1 and August 31, 2026, to ensure their training program information (e.g., certification/entity characteristics) in the new system is correct.

ETPL Coordinators should **assist** with provider login and will continue to verify data, review progress, and report system issues to OET.

IWDS 2.0 Access

3 PROVIDER USER GROUPS

1

Group 1 - Active Contacts

- Providers with active contacts that have user accounts in IWDS 1.0 (current IWDS)

2

Group 2 - No Active Contacts

- Providers in IWDS 1.0 that have no active user accounts and have never updated any of their programs.

3

Group 3 - New Providers

- New Providers that have never been listed on the ETPL.

 Each of these three (3) groups has a different pathway to gain access to IWDS 2.0

Group 1

Providers with IWDS 1.0 Accounts

Providers that have active contacts in IWDS 1.0 will have their user account moved into IWDS 2.0.



- The account user id will be the email address that is stored in IWDS 1.0.
- The account holder will get an email at that address with a link to obtain their State of Illinois ILogin account.
- These providers must use that matching email and sign-up for the ILogin account.

Note: If you believe you fall into this category, make sure your email address listed is the appropriate address to receive your new link to obtain your new IWDS 2.0 account. You may need to contact your LWIB or State ETPL Coordinator if you cannot login to IWDS 1.0

Group 2

Providers in IWDS 1.0 with No Account

Providers that have programs in IWDS 1.0 that do not have active contacts with user accounts in IWDS 1.0 will need to get added into IWDS 2.0



- The designated provider contact must contact their LWIB ETPL Coordinator and request access to IWDS 2.0
- The LWIB must enter the request into IWDS 2.0 to add a new provider user account.
- The account holder will then get an email at the email address with a link to obtain their State of Illinois ILogin account.
- These providers must use that matching email and sign-up for the ILogin account.

Group 3

Providers not on the current ETPL in IWDS 1.0

Providers that have no programs in IWDS 1.0 but wish to get listed on the ETPL will access the public Illinois workNet website to gain access and submit their programs for review.



- The designated Provider Administrator will access the link to become an Eligible Training Provider.
- The designated Provider Administrator will complete the pre-screening pages online.
- If the information entered in the pre-screening pages meets the ETPL policy then the Provider Administrator will end the pre-screening with a link to sign up for a new account and access IWDS 2.0.

Gaining Access to IWDS 2.0 is a Two (2) Part Process

Access

1. The provider user must have an account created in IWDS 2.0.
2. The provider user must have a State of Illinois ILogin account.

[Directions](https://iloginhelp.illinois.gov/how-to-guides/new-users-setup-an-ilogin-account.html) on setup of an ILogin Account

<https://iloginhelp.illinois.gov/how-to-guides/new-users-setup-an-ilogin-account.html>



Once the ILogin account is created then simply access the link to IWDS-2.0, login through the ILogin prompt, and you will be directed to your provider details page.

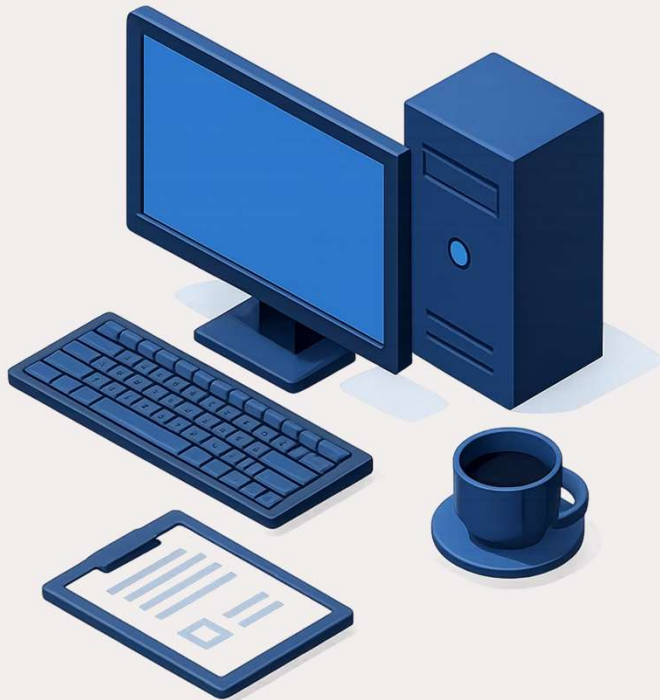
IWDS 2.0 Access Review

Three (3) distinct provider user groups that need access to IWDS 2.0

Must have a Provider User account in IWDS 2.0 setup. Contact LWIB ETPL Coordinator to verify.

Must sign-up for a State of IL ILogin account that matches the IWDS 2.0 account.

Must login through the ILogin prompt provided to gain access to your provider record and programs.



Upcoming ETPL Training

Please add these dates to your 2026 calendars

•Module 2 – ETPL in IWDS 2.0: Provider Access, Eligibility, and Data Management: *All Eligible Training Providers, LWIB/State ETPL Coordinators*, June 3, 2026, 1pm-2:30pm, [Registration Link](#)

•Module 3 - ETPL in IWDS 2.0: Review, Approval, and Policy Updates in IWDS 2.0: *LWIB/State EPTL Coordinators*, June 10, 2026, 1pm-2:30pm, [Registration Link](#)

•Module 4 – ETPL in IWDS 2.0: Dashboards, Workflow, and Reporting in IWDS 2.0: *LWIB/State EPTL Coordinators*, June 17, 2026, 1pm-2:30pm, [Registration Link](#)

•Module 5 - ETPL New Performance Reporting Process, Summary and Q&A: *All Eligible Training Providers, LWIB/State ETPL Coordinators*, June 24, 2026, 1pm-2:30pm, [Registration Link](#)

 Your active participation and timely action are crucial for a smooth transition. Thank you for your cooperation!



Thank You & Next Steps

We appreciate your active participation and commitment to a successful IWDS 2.0 transition. Your efforts ensure continued support for our workforce development programs.

Contact SIU or OET

For questions and support regarding the new IWDS 2.0 transition, please reach out to the Illinois workNet team.

Email: iwdst.info@illinoisworknet.com

For questions regarding submitting new Initial and Continued Eligibility Applications, updating your program information, and policy updates, please reach out to your LWIB ETPL Coordinator or contact the Office of Employment and Training (OET).

Email: CEO.OET.etplcoord@illinois.gov

Online Resources & Training

Visit the [Illinois workNet IWDS Transition Page](#) for comprehensive guides, FAQs, and recorded training modules.

Upcoming Training Modules for **Training Providers**:

- **Module 2:** IWDS 2.0 Application Submission (June 3rd)
- **Module 5:** Performance Reporting in IWDS 2.0 (June 24th)