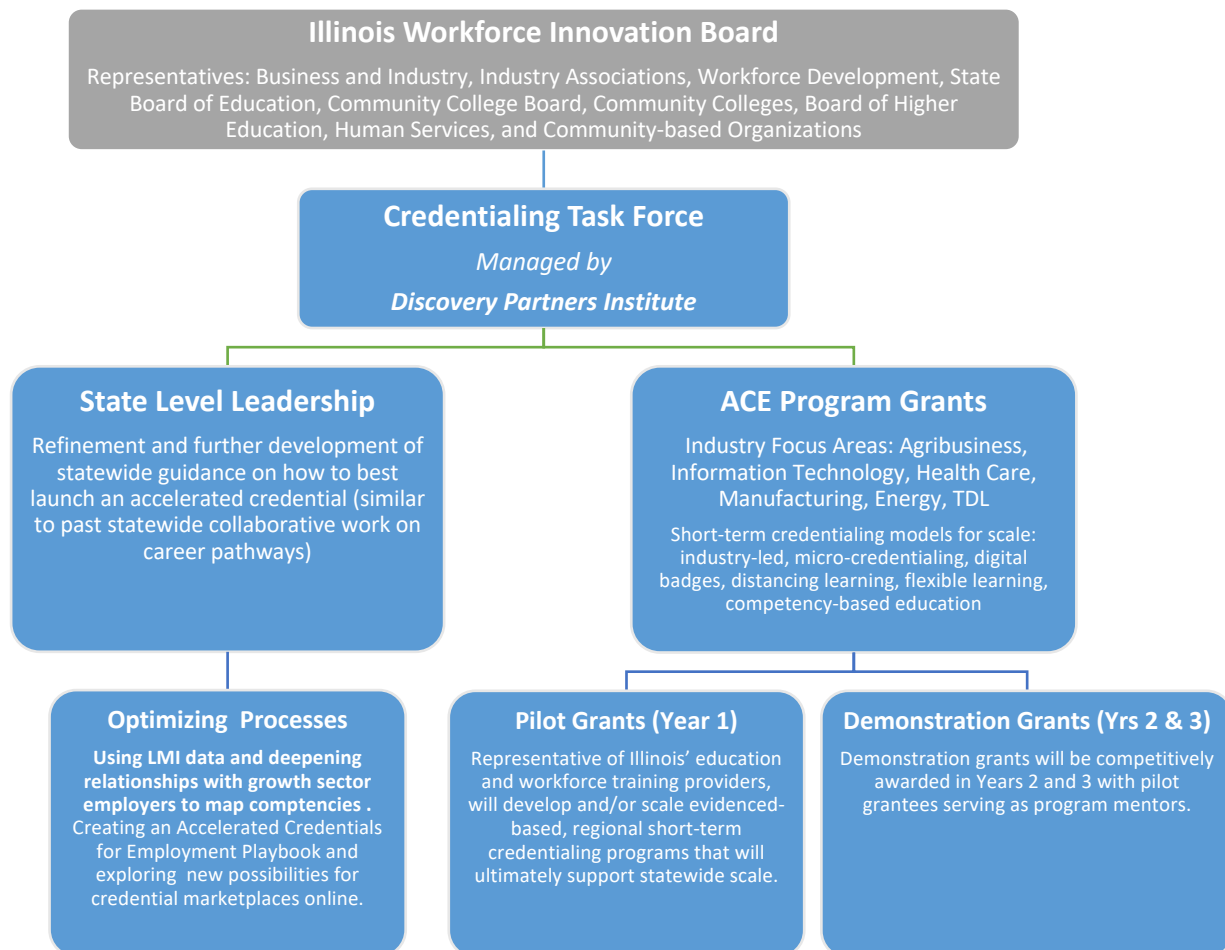


# Supplemental Materials: Figures and Tables

## Index

|  |    |
|--|----|
| Figure 1: ACE-IL At-a-Glance showing the high-level organization and functional components. ....   | 2  |
| Figure 2: Illinois Employment Statistics for Selected Industry .....   | 3  |
| Figure 3: Illinois Education Inequities.....   | 4  |
| Figure 4: Building upon the Career Pathways Dictionary, ACE-IL will leverage extensive employer and training stakeholder partnerships throughout the state. ....   | 5  |
| Figure 5: Illinois' 22 Local Workforce Innovation Areas shown within the state's 10 Economic Development Regions.....  | 6  |
| Figure 6: ACE-IL Partner Institutions and Organizations include State Government (including five departments of the Illinois Department of Commerce and Economic Opportunity, DCEO), program pilots, institutions of higher education, and both industry and workforce innovation partnerships. ....   | 7  |
| Figure 7: ACE-IL partner Illinois Innovation Network (IIN) Hubs shown here overlaid on the June 2020 Illinois unemployment rates by county. IIN is a system of connected university-community-industry-based hubs throughout the state that work together to drive innovation, economic development, and workforce development across Illinois. Hubs utilize a combination of research, public-private partnerships, entrepreneurship, and workforce training programs to spur economic growth in their region and throughout the state..... | 8  |
| Figure 8: Example of three established industry-aligned credentials, with associated required and optional badges, from the SIUE program, whose credentialing systems will serve as a model for ACE-IL. ....   | 9  |
| Figure 9: Illinois industry sectors showing percent change expected from 2016-2026 (horizontal) and location quotient (verticle) .....   | 10 |



**Figure 1: ACE-IL At-a-Glance showing the high-level organization and functional components.**

Figure 2 shows Illinois economic growth sectors from the Governor’s 2019-2024 Economic Development Report: A Plan to Revitalize the Illinois Economy and Build the Workforce of the Future. Available at:

<https://www2.illinois.gov/dceo/Documents/IllinoisEconomicPlan2019.10.9.2019.pdf>

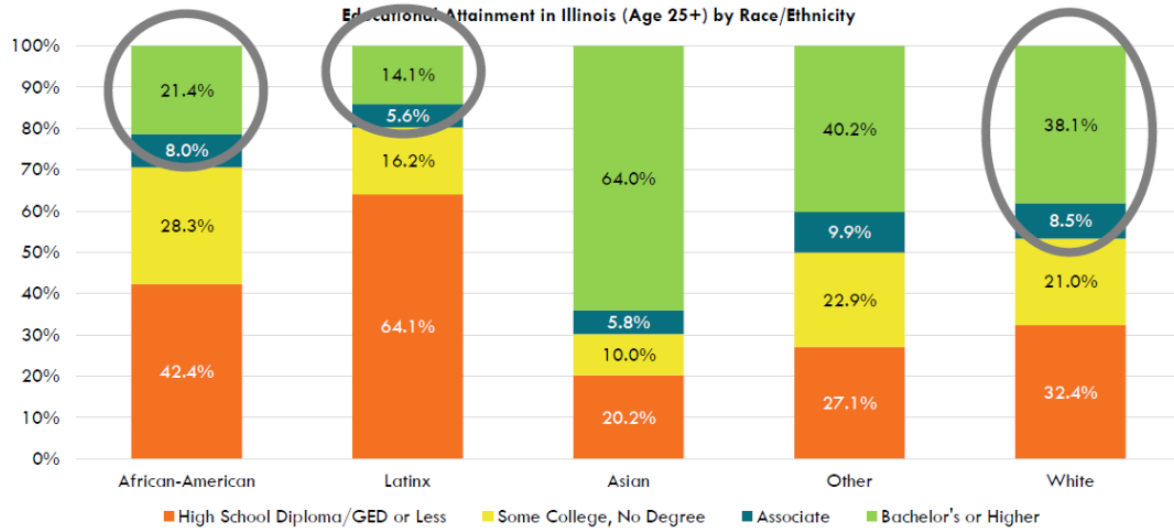
| Industry                     | Jobs in 2018 | Average wage | Location quotient | Employment change, 2009-18 | Number of employers | Projected employment change, 2016-26 | State purchasing coefficient | Value added per employee |
|------------------------------|--------------|--------------|-------------------|----------------------------|---------------------|--------------------------------------|------------------------------|--------------------------|
| Agribusiness and Ag Tech     | 192,084      | \$60,106     | 0.96              | + 22.6%                    | 8,982               | + 5.5%                               | \$34                         | \$99,099                 |
| Energy                       | 54,401       | \$95,741     | 0.96              | - 3.0%                     | 2,062               | 0.0%                                 | \$60                         | \$514,050                |
| Information Technology       | 137,651      | \$108,153    | 0.84              | + 39.5%                    | 15,780              | + 11.9%                              | \$65                         | \$129,300                |
| Life Sciences                | 48,751       | \$152,030    | 0.90              | + 5.1%                     | 1,655               | + 2.0%                               | \$24                         | \$386,973                |
| Healthcare                   | 733,133      | \$57,732     | 0.94              | + 8.0%                     | 29,713              | + 8.1%                               | \$66                         | \$96,154                 |
| Manufacturing                | 417,830      | \$68,260     | 1.20              | - 2.2%                     | 13,240              | + 1.0%                               | \$32                         | \$146,155                |
| Transportation and Logistics | 515,178      | \$70,129     | 1.27              | + 15.1%                    | 40,801              | + 9.4%                               | \$75                         | \$71,731                 |

Note: Location quotient is the ratio of the employment share in Illinois to the employment share in the nation. State purchasing coefficient is the share of every \$100 spent by companies in this industry that goes to suppliers in Illinois. The "manufacturing" industry includes only manufacturing industries not included in other sectors.

Source: Illinois Department of Employment Security, Quarterly Census of Employment and Wages, 2009 and 2018

**Figure 2: Illinois Employment Statistics for Selected Industries.**

## Large attainment gaps between White and African American, Latinx adults



Source: 2018 American Community Survey IPUMS 5-Year Estimates

6

Figure 3: Illinois Education Inequities among adults (age 25 or older). Source: [https://www.ibhe.org/pdf/IBHE\\_Equity\\_Update\\_ppt.pdf](https://www.ibhe.org/pdf/IBHE_Equity_Update_ppt.pdf)

---

## State Boards



---

## State Agencies

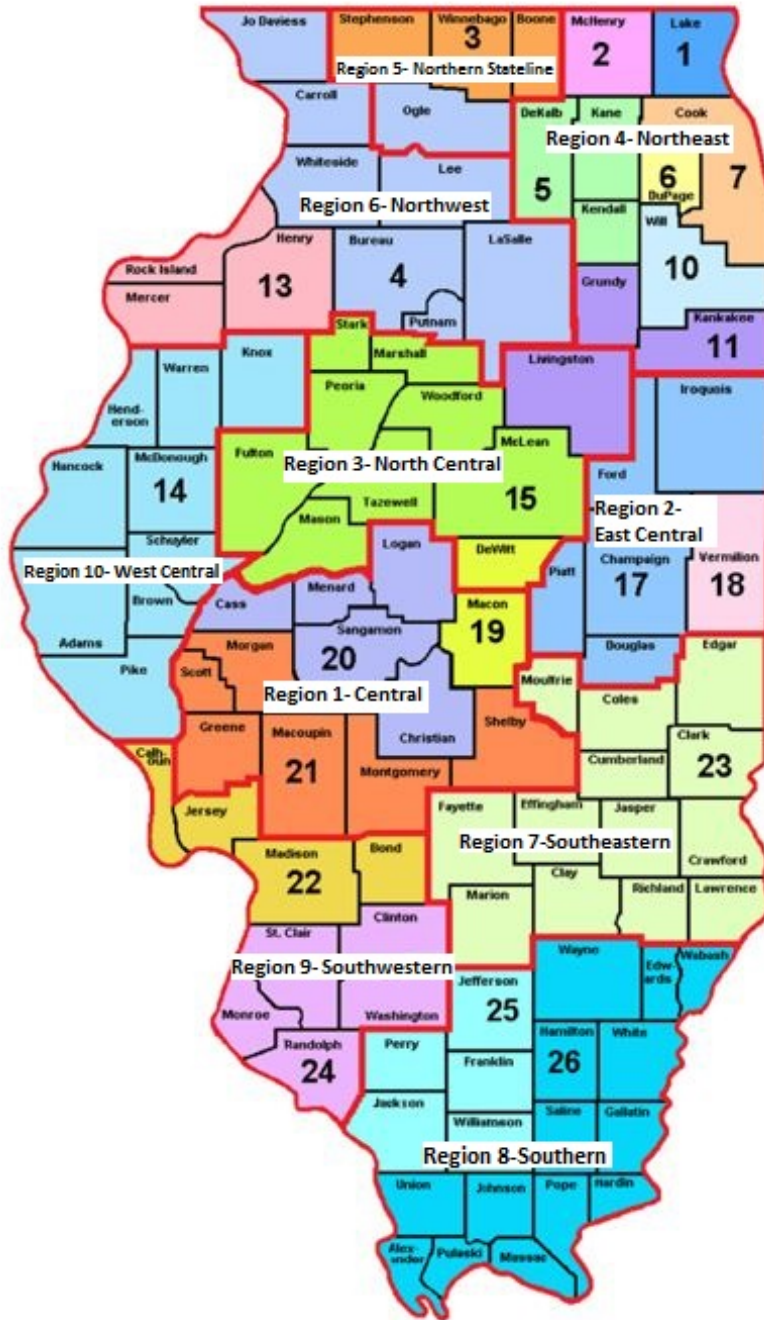


---

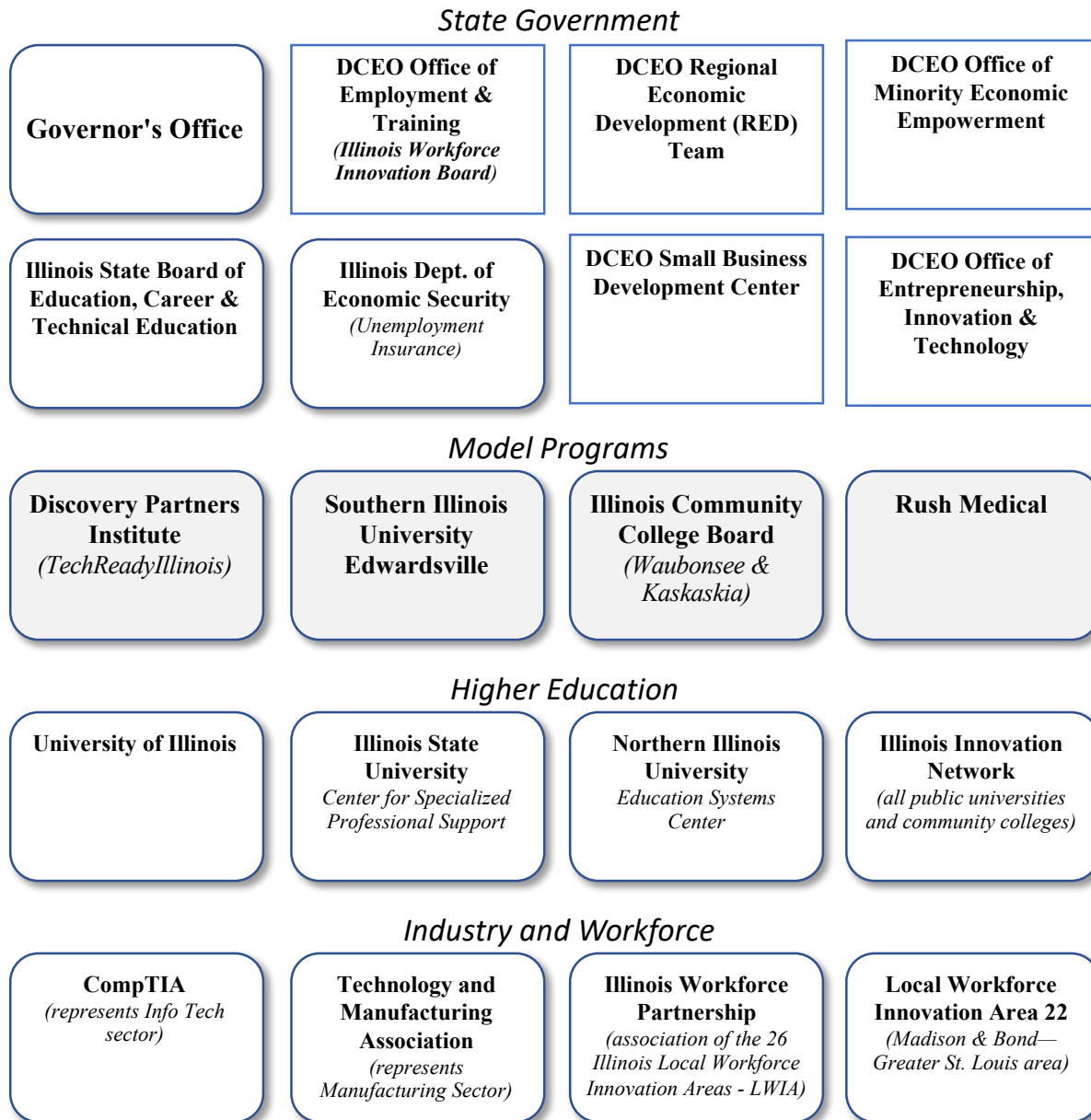
## External Partners



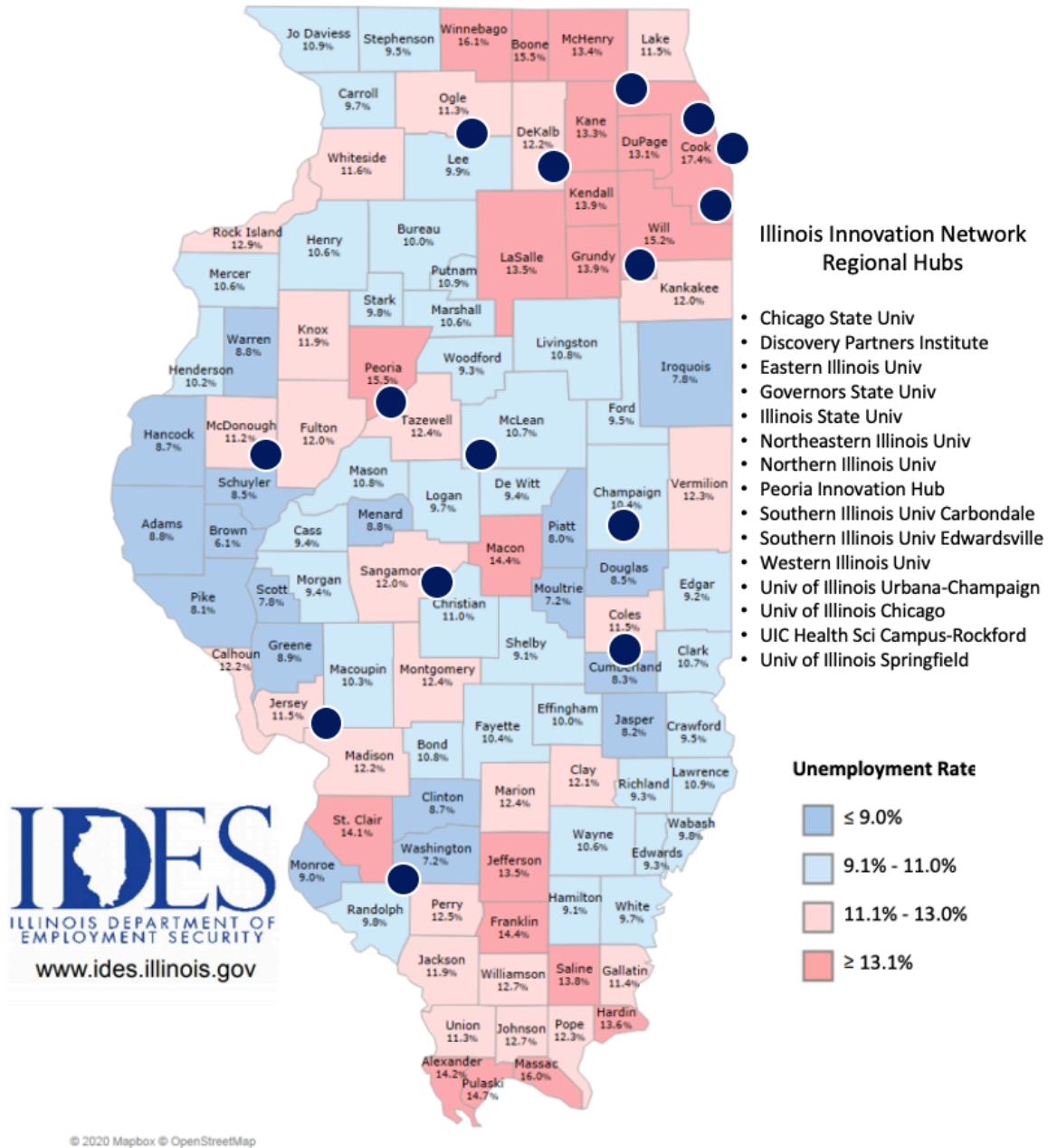
**Figure 4: Building upon the Career Pathways Dictionary, ACE-IL will leverage extensive employer and training stakeholder partnerships throughout the state.**



**Figure 5: Illinois' 22 Local Workforce Innovation Areas shown within the state's 10 Economic Development Regions.**



**Figure 6: ACE-IL Partner Institutions and Organizations include State Government (including five departments of the Illinois Department of Commerce and Economic Opportunity, DCEO), model programs, institutions of higher education, and both industry and workforce innovation partnerships.**

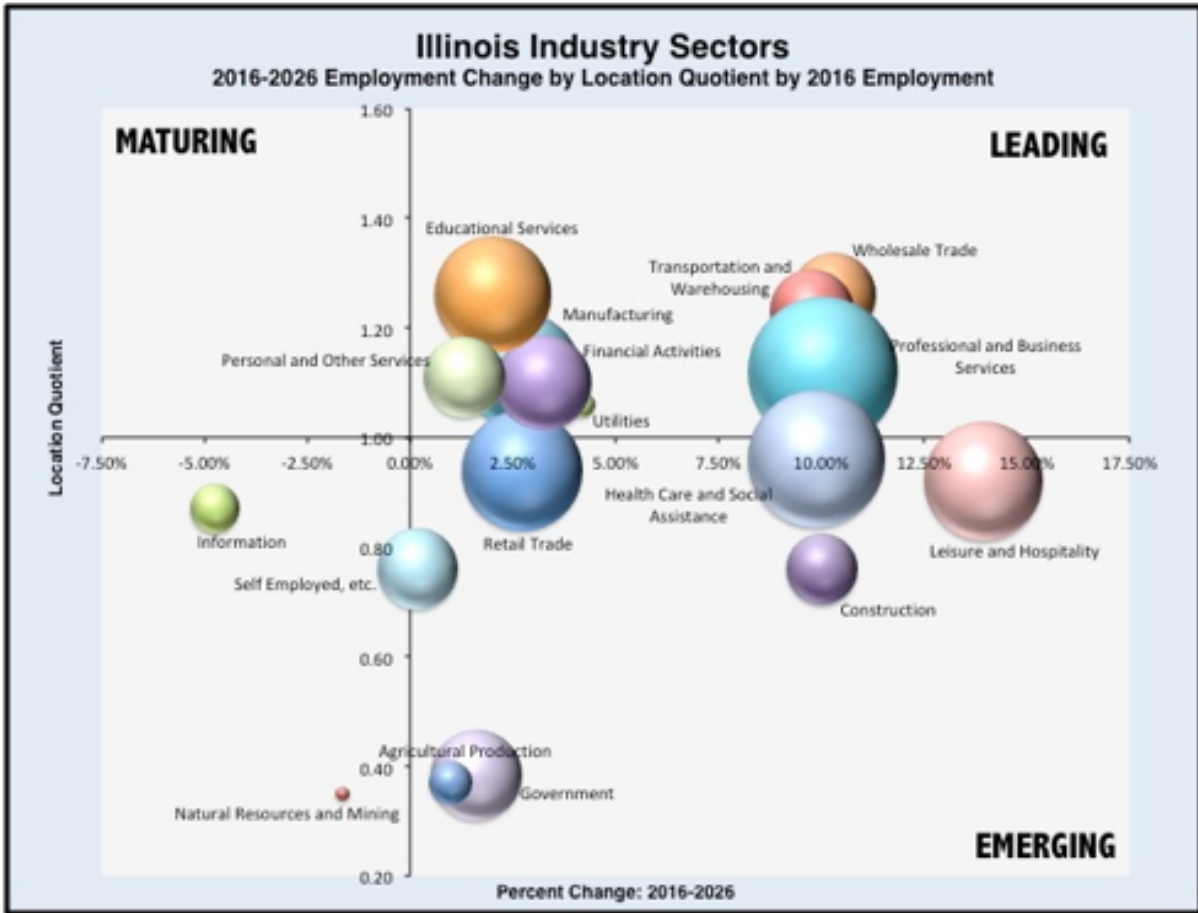


**Figure 7: ACE-IL partner Illinois Innovation Network (IIN) Hubs shown here overlaid on the June 2020 Illinois unemployment rates by county. IIN is a system of connected university-community-industry-based hubs throughout the state that work together to drive innovation, economic development, and workforce development across Illinois. Hubs utilize a combination of research, public-private partnerships, entrepreneurship, and workforce training programs to spur economic growth in their region and throughout the state.**



| <b>INDUSTRY-ALIGNED CREDENTIAL</b> | <b>REQUIRED BADGES</b>                                      |
|------------------------------------|---|
| <b>Laboratory Technician</b>       | Applied Chemistry/Biology/Math Fundamentals                 |
|                                    | Lab Safety  |
|                                    | Introduction to General Laboratory Techniques               |
|                                    | Introduction to Good Documentation Practices                |
| <b>Food Science Technician</b>     | Applied Chemistry/Biology/Math Fundamentals                 |
|                                    | Lab Safety  |
|                                    | Introduction to General Laboratory Techniques               |
|                                    | Introduction to Good Documentation Practices                |
|                                    | Food Science  |
|                                    | <b>Optional Food Safety Specialization</b>                  |
|                                    | Microbiology  |
| <b>Chemistry Technician</b>        | Applied Chemistry/Biology/Math Fundamentals                 |
|                                    | Lab Safety  |
|                                    | Introduction to General Laboratory Techniques               |
|                                    | Introduction to Good Documentation Practices                |
|                                    | Intermediate Chemistry and Biology Fundamentals             |
|                                    | Intermediate Laboratory Techniques                          |
|                                    | Chemistry Lab Manual  |
|                                    | Introduction to Analytical Chemistry Techniques             |
|                                    | Introduction to Quality Assurance and Quality Control       |
|                                    | <b>Optional Chemical Technician Specialization</b>          |
|                                    | Introduction to Biochemistry and Cellular/Molecular Biology |
| Microbiology                       |   |

**Figure 8: Example of three established industry-aligned credentials, with associated required and optional badges, from the SIUE program, whose credentialing systems will serve as a model for ACE-IL.**



**Figure 9: Illinois industry sectors showing percent change expected from 2016-2026 (horizontal) and location quotient (vertical)**