



# Illinois Performance Accountability and Transparency System (IPATS)

January 2021

**DRAFT - NOT FOR DISTRIBUTION**

*Workforce Innovation Opportunity Act (WIOA)*

# Illinois Performance Accountability and Transparency System (IPATS) Objectives

## Accountability

- Develop a WIOA Performance Accountability and Transparency prototype application.

## Transparency

- Provide transparency dashboards on WIOA performance indicator data for better program management, oversight, and accountability.

## Relevant

- Real time tracking of client data and program achievement to facilitate customer service and follow through to performance.

## Analytical

- Automate the DOL Statistical Adjustment Model (SAM) to standardize and innovate local performance negotiations.

## Integrity

- Create a virtual Data Validation System (DVS) based on TEGL 7-18 that is scalable for all WIOA programs.

# Agile Development

## Short Term Goals

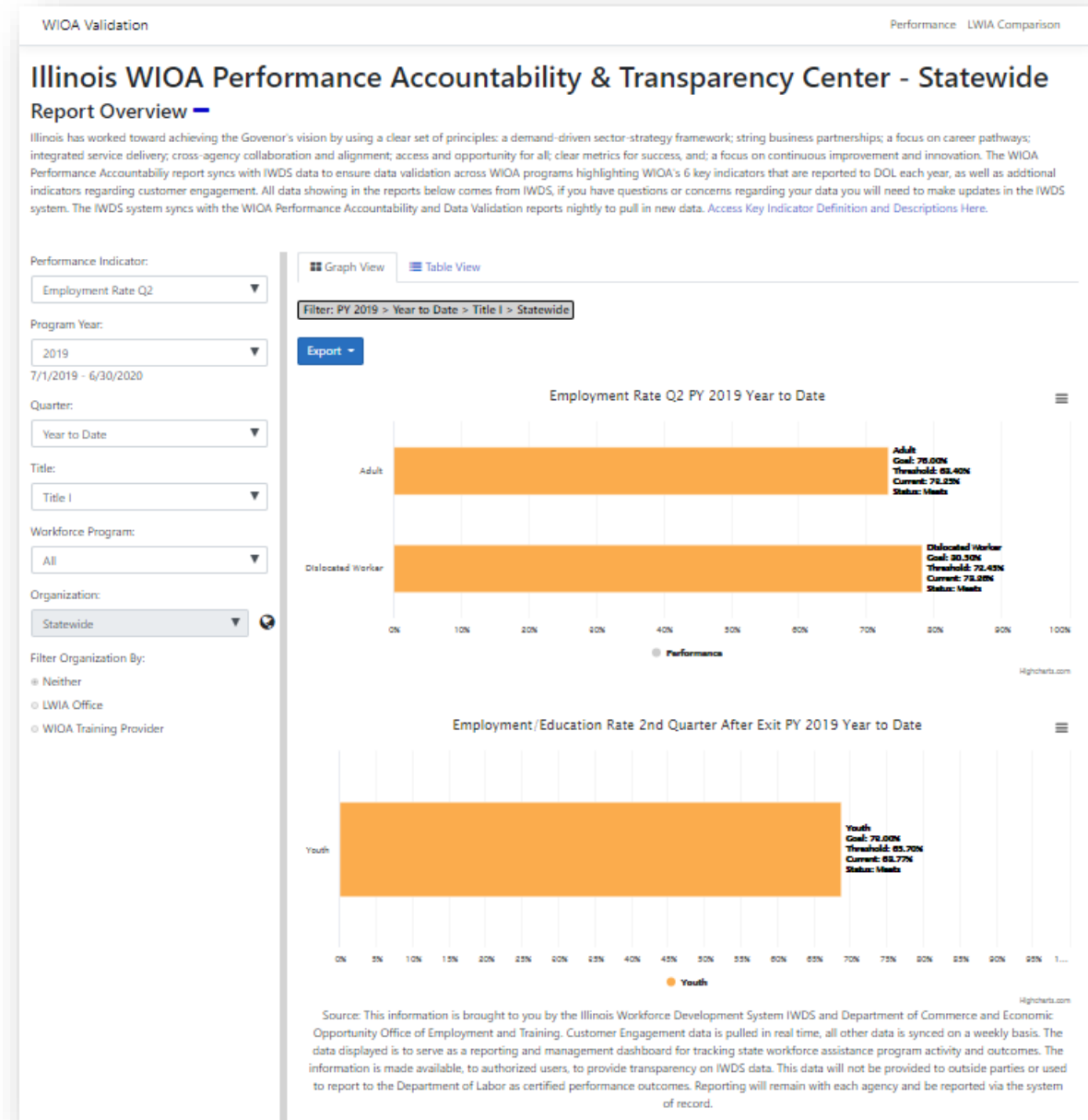
- Focus on WIOA Title I Performance Indicators
- Portable and quick access to IPATS
- Easily understandable with versatile search options
- Extractable Performance Accountability Reports
- Data Validation and Monitoring Tool
- Statistical Adjustment Model

## Long Term Potential


- Expand to include WIOA Title II & III & IV
- Expand to include Other State and Federal workforce Programs
- Negotiating Goals
- Customizable Reporting
- ETPL Information

# Data Sourcing

- WIOA Title I data will integrate directly with IWDS data tables to populate IPATS Performance Indicator on a weekly refresh basis & Customer Engagement on hourly basis.
- Login required; data will be displayed to authorized users based on varying permission levels.
- Serve as a reporting and management dashboard for tracking state workforce assistance program activity and outcomes.
- Searches and filters allow for multiple views and data comparisons.
- Data defaults to high level of information with option to get to (or drill down to) individual customer level of data. i.e. – per individual
- The data will not be provided to outside parties or used to report to the Department of Labor as certified performance outcomes. Reporting will remain with the agency and be reported via the case management system of record.



# Current Reporting Available in IWDS


**IWDS** Illinois Workforce Development System

**Performance Management**

[Staff Menu](#)  
[FAQs](#)  
[I'm Done: Log Off](#)

## Final Annual Outcomes

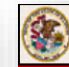
LWA: 00 - DCEO

Overall Outcome: **MEET** Program Year: 2017 through Program Quarter: 4

Performance Measurement	Negotiated Goal	90% Threshold	Actual Outcome	% of Negotiated Goal	% of Threshold Goal	Status
<a href="#">Youth Employment Rate Q2 (YER2) :</a>	73.0%	65.7%	72.47%	99.27%	110.3%	MEET
<a href="#">Youth Median Earnings Rate Q2 (YMER) :</a>	\$0.00	\$0.00	\$3,055.99	0.0%	0.0%	N/A
<a href="#">Youth Employment Rate Q4 (YER4) :</a>	61.1%	54.99%	67.52%	110.51%	122.79%	EXCEED
<a href="#">Youth Credential Attainment Rate (YCAR) :</a>	69.0%	62.1%	62.36%	90.38%	100.42%	MEET
<a href="#">Youth Measurable Skills Gain (YMSG) :</a>	0.0%	0.0%	31.96%	0.0%	0.0%	N/A
<a href="#">Adult Employment Rate Q2 (AER2) :</a>	72.4%	65.16%	71.71%	99.05%	110.05%	MEET
<a href="#">Adult Median Earnings Rate Q2 (AMER) :</a>	\$5,000.00	\$4,500.00	\$6,361.30	127.23%	141.36%	EXCEED
<a href="#">Adult Employment Rate Q4 (AER4) :</a>	71.0%	63.9%	69.57%	97.99%	108.87%	MEET
<a href="#">Adult Credential Attainment Rate (ACAR) :</a>	55.6%	50.04%	72.62%	130.61%	145.12%	EXCEED
<a href="#">Adult Measurable Skills Gain (AMSG) :</a>	0.0%	0.0%	26.71%	0.0%	0.0%	N/A
<a href="#">DW Employment Rate Q2 (DER2) :</a>	78.0%	70.2%	77.83%	99.78%	110.87%	MEET
<a href="#">DW Median Earnings Rate Q2 (DMER) :</a>	\$6,978.00	\$6,280.20	\$9,004.69	129.04%	143.38%	EXCEED
<a href="#">DW Employment Rate Q4 (DER4) :</a>	75.4%	67.86%	74.5%	98.81%	109.78%	MEET
<a href="#">DW Credential Attainment Rate (DCAR) :</a>	60.5%	54.45%	73.59%	121.64%	135.15%	EXCEED
<a href="#">DW Measurable Skills Gain (DMSG) :</a>	0.0%	0.0%	24.39%	0.0%	0.0%	N/A

AER2,AMER,DER2,DMER,YER2,YMER based on customers who exited between 07/01/2016 and 06/30/2017  
 AER4,ACAR,DER4,DCAR,YER4,YCAR based on customers who exited between 01/01/2016 and 12/31/2016  
 AMSG,DMSG,YMSG based on enrollment anniversaries between 7/01/2017 and 06/30/2018

Copyright 2004 by the State of Illinois. Using this web site indicates acceptance of [DCEO User Agreement](#) and [IWDS Privacy Notice](#).


**IWDS** Illinois Workforce Development System

**Performance Management**

[Staff Menu](#)  
[FAQs](#)  
[I'm Done: Log Off](#)

## Year-to-Date Manager's Report

LWA: 02 - McHenry County Workforce Network

Overall Outcome: **MEET** Program Year: 2019 through Program Quarter: 4

Performance Measurement	Negotiated Goal	90% Threshold	Actual Outcome	% of Negotiated Goal	% of Threshold Goal	Status
<a href="#">Youth Employment Rate Q2 (YER2) :</a>	63.0%	56.7%	81.4%	129.21%	143.56%	EXCEED
<a href="#">Youth Median Earnings Rate Q2 (YMER) :</a>	\$0.00	\$0.00	\$4,046.31	0.0%	0.0%	N/A
<a href="#">Youth Employment Rate Q4 (YER4) :</a>	65.0%	58.5%	67.74%	104.22%	115.79%	EXCEED
<a href="#">Youth Credential Attainment Rate (YCAR) :</a>	65.0%	58.5%	80.95%	124.54%	138.38%	EXCEED
<a href="#">Youth Measurable Skills Gain (YMSG) :</a>	0.0%	0.0%	20.83%	0.0%	0.0%	N/A
<a href="#">Adult Employment Rate Q2 (AER2) :</a>	74.0%	66.6%	80.95%	109.39%	121.55%	EXCEED
<a href="#">Adult Median Earnings Rate Q2 (AMER) :</a>	\$5,000.00	\$4,500.00	\$8,710.26	174.21%	193.56%	EXCEED
<a href="#">Adult Employment Rate Q4 (AER4) :</a>	75.0%	67.5%	74.47%	99.29%	110.33%	MEET
<a href="#">Adult Credential Attainment Rate (ACAR) :</a>	70.0%	63.0%	69.7%	99.57%	110.63%	MEET
<a href="#">Adult Measurable Skills Gain (AMSG) :</a>	0.0%	0.0%	48.39%	0.0%	0.0%	N/A
<a href="#">DW Employment Rate Q2 (DER2) :</a>	79.0%	71.1%	87.18%	110.35%	122.62%	EXCEED
<a href="#">DW Median Earnings Rate Q2 (DMER) :</a>	\$7,700.00	\$6,930.00	\$12,896.27	167.48%	186.09%	EXCEED
<a href="#">DW Employment Rate Q4 (DER4) :</a>	76.0%	68.4%	89.77%	118.12%	131.24%	EXCEED
<a href="#">DW Credential Attainment Rate (DCAR) :</a>	66.0%	59.4%	80.95%	122.65%	136.28%	EXCEED
<a href="#">DW Measurable Skills Gain (DMSG) :</a>	0.0%	0.0%	50.72%	0.0%	0.0%	N/A

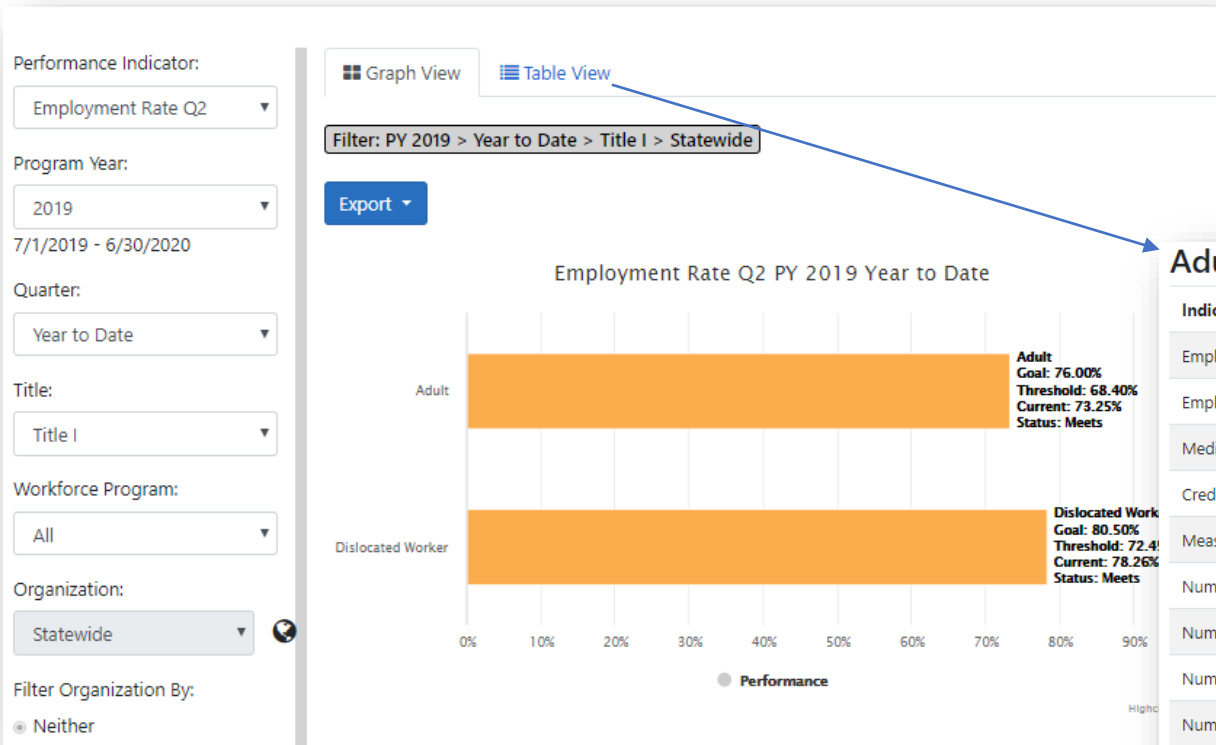
AER2,AMER,DER2,DMER,YER2,YMER based on customers who exited between 07/01/2018 and 06/30/2019  
 AER4,ACAR,DER4,DCAR,YER4,YCAR based on customers who exited between 01/01/2018 and 12/31/2018  
 AMSG,DMSG,YMSG based on enrollment anniversaries between 7/01/2019 and 06/30/2020

Copyright 2004 by the State of Illinois. Using this web site indicates acceptance of [DCEO User Agreement](#) and [IWDS Privacy Notice](#).

# Performance Accountability Statewide

## WIOA Key Performance Indicator Outcomes:

- Employment Rate 2<sup>nd</sup> Quarter after Exit
- Employment Rate 4<sup>th</sup> Quarter after Exit
- Median Earnings 2<sup>nd</sup> Quarter after Exit
- Credential Attainment
- Measurable Skills Gain
- Effectiveness in Serving Employers



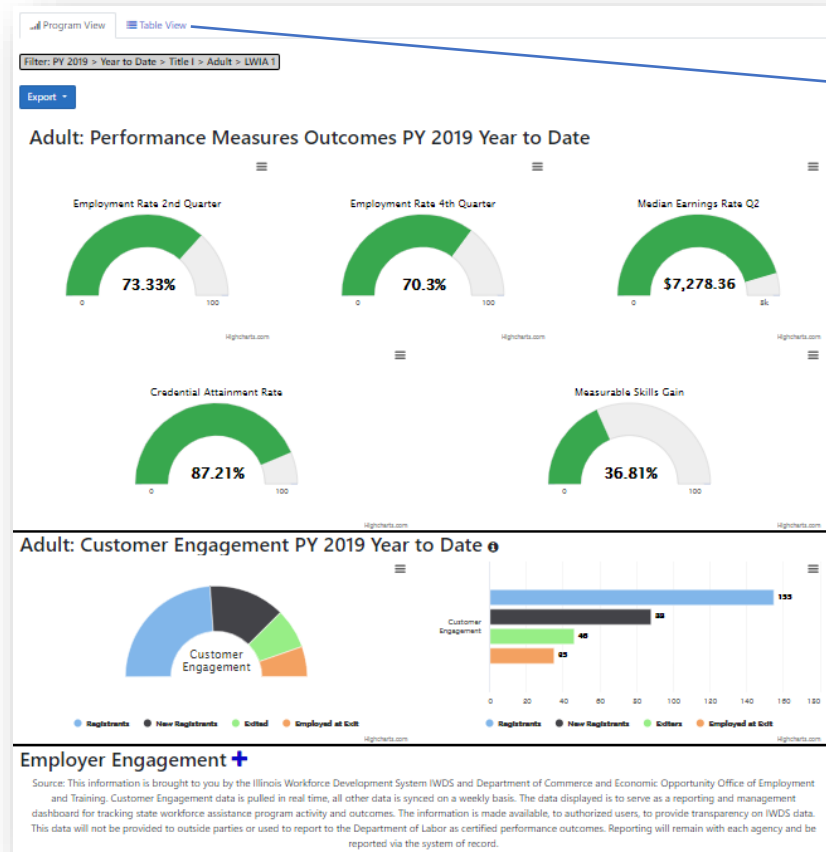
## Adult: Performance Measures Outcomes PY 2019 Year to Date

Indicator	Goal	Status	Current Total	Threshold	Numerator	Denominator
Employment Rate Q2	76%	Meets	73.25%	68.4%	3,607	4,924
Employment Rate Q4	73%	Meets	71.23%	65.7%	3,359	4,716
Median Earnings Rate Q2	\$5,460.00	Exceeds	\$7,269.36	\$4,914.00	\$7,269.36	\$2,719.00
Credential Attainment Rate	63%	Exceeds	74.53%	56.7%	2,440	3,274
Measurable Skills Gain	0%	Exceeds	35.93%	0%	1,746	4,860
Number of Registrants	Baseline	N/A	5,323	N/A	5,323	5,323
Number of New Registrants	Baseline	N/A	49%	N/A	2,601	5,323
Number of Completers	Baseline	N/A	29%	N/A	2,197	7,520
Number of Exiters	Baseline	N/A	2,197	N/A	2,197	2,197
Number Employed at Exit	Baseline	N/A	74%	N/A	1,621	2,197

# Performance Accountability Statewide

## WIOA Customer Engagement Outcomes:

- Number of Registrants
- Number of New Registrants
- Number of Completers
- Numbers of Exiters
- Number Employed at Exit



Program View Table View

Filter: PY 2019 > Year to Date > Title I > Adult > LWIA 1

Export

### Adult: Performance Measures Outcomes PY 2019 Year to Date

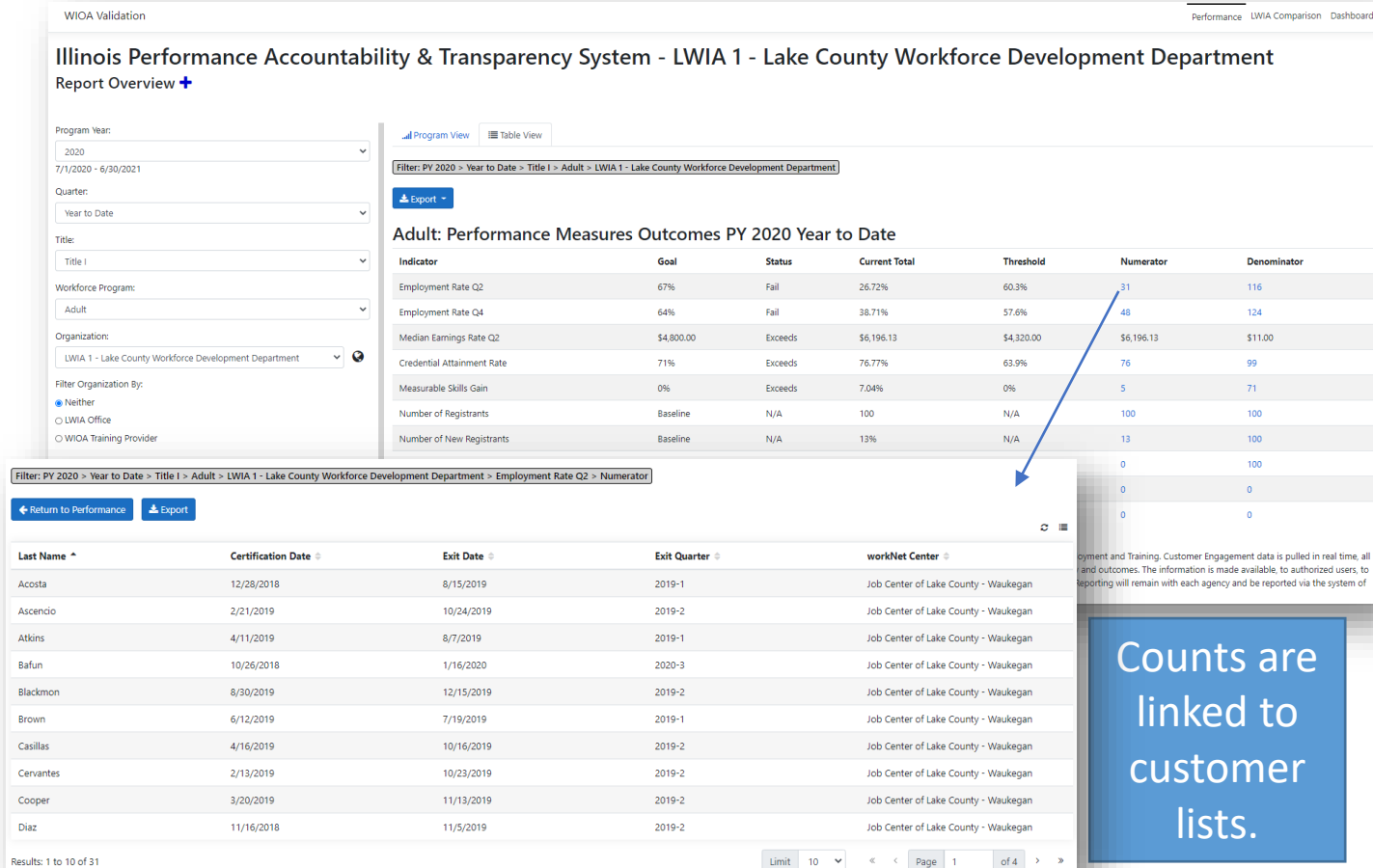
Indicator	Goal	Status	Current Total	Threshold	Numerator	Denominator
Employment Rate Q2	67%	Exceeds	73.33%	60.3%	88	120
Employment Rate Q4	64%	Exceeds	70.3%	57.6%	71	101
Median Earnings Rate Q2	\$4,800.00	Exceeds	\$7,278.36	\$4,320.00	\$7,278.36	\$69.00
Credential Attainment Rate	71%	Exceeds	87.21%	63.9%	75	86
Measurable Skills Gain	0%	Exceeds	36.81%	0%	60	163
Number of Registrants	Baseline	N/A	155	N/A	155	155
Number of New Registrants	Baseline	N/A	57%	N/A	88	155
Number of Completers	Baseline	N/A	23%	N/A	46	201
Number of Exiters	Baseline	N/A	46	N/A	46	46
Number Employed at Exit	Baseline	N/A	76%	N/A	35	46

Source: This information is brought to you by the Illinois Workforce Development System IWDS and Department of Commerce and Economic Opportunity Office of Employment and Training. Customer Engagement data is pulled in real time, all other data is synced on a weekly basis. The data displayed is to serve as a reporting and management dashboard for tracking state workforce assistance program activity and outcomes. The information is made available, to authorized users, to provide transparency on IWDS data. This data will not be provided to outside parties or used to report to the Department of Labor as certified performance outcomes. Reporting will remain with each agency and be reported via the system of record.

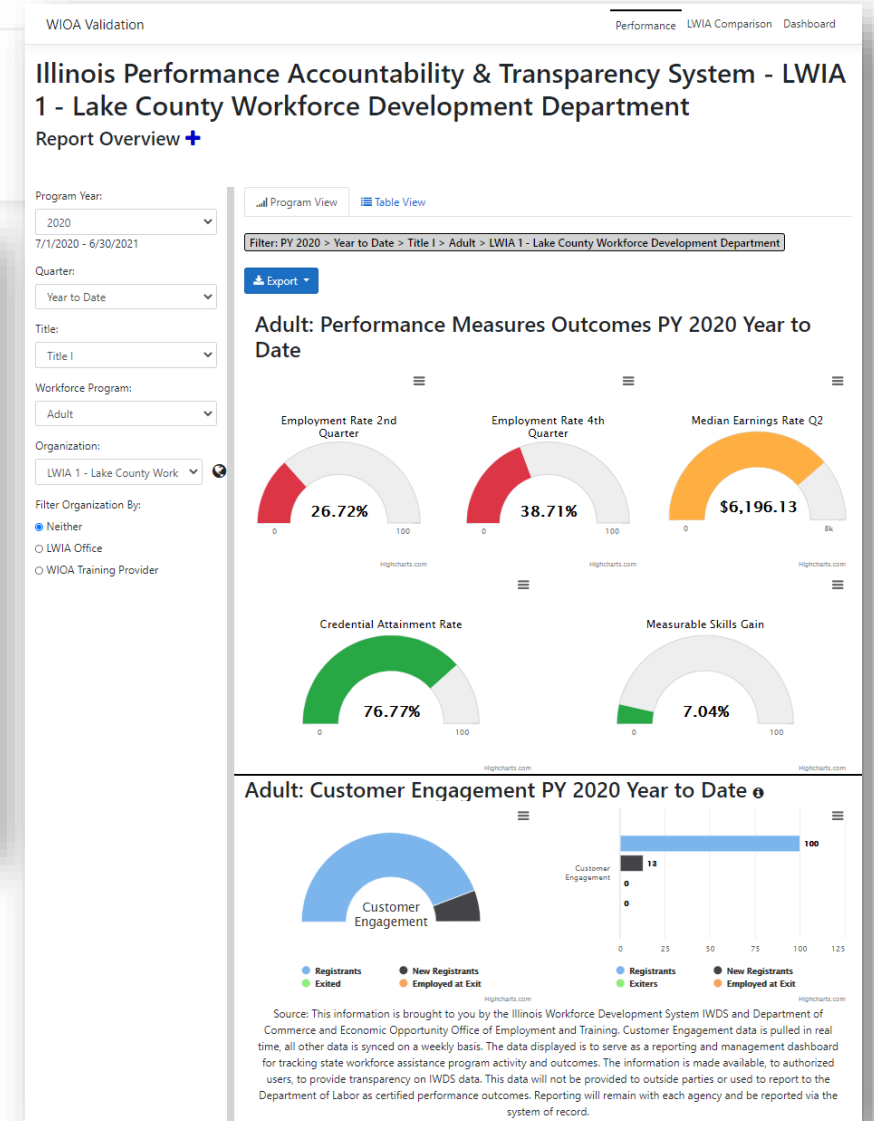


# Performance Accountability Detail

Detail Dashboards by LWIA or by program drillable to information on each individual participant.



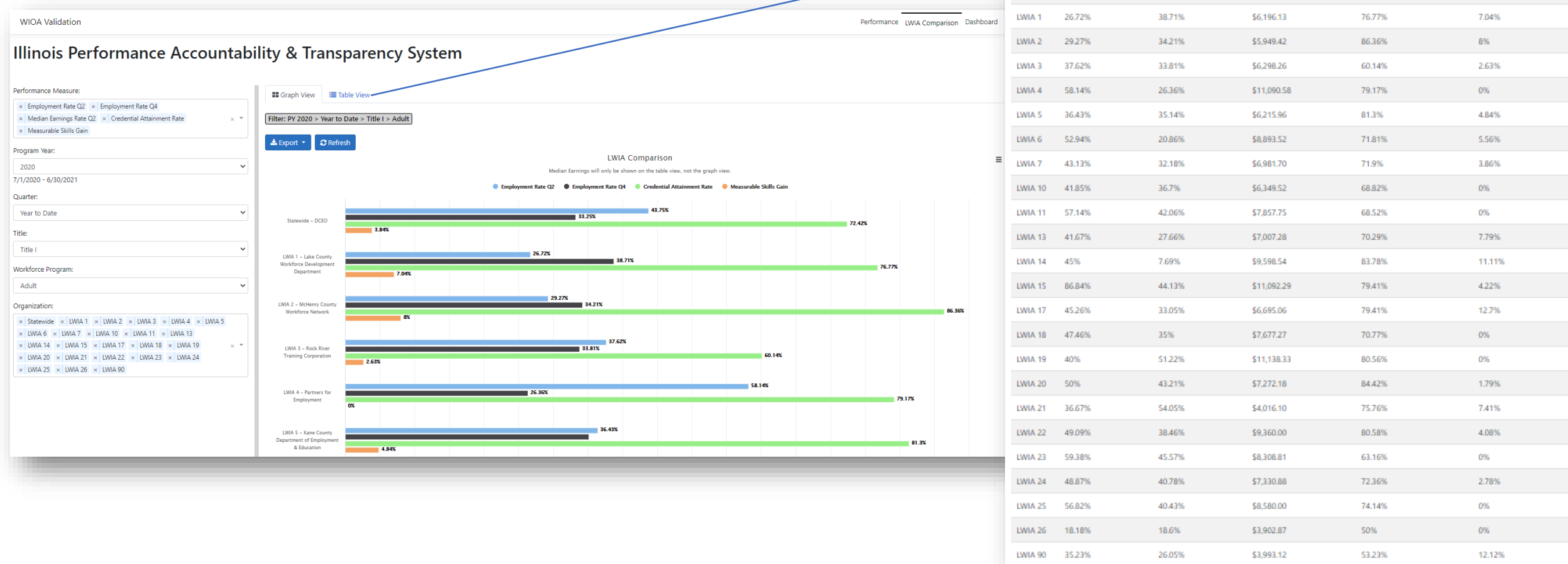
Counts are linked to customer lists.





# Key Indicator LWIA Comparison

Compare LWIA's performance across the 5 key WIOA indicators.



# Dashboards

Easily monitor and track your customer's progress to ensure your performance metrics are accurately reflected

WIOA Validation	Performance	LWIA Comparison	Dashboard
Illinois Performance Accountability & Transparency System - Statewide - DCEO			
Report Overview +			
Title:	Filter: PY 2020 > Year to Date > Title I > Statewide - DCEO		
Title I			
Workforce Program:			
All			
Organization:			
Statewide - DCEO			
Filter Organization By:			
<input checked="" type="radio"/> Neither			
<input type="radio"/> LWIA Office			
<input type="radio"/> WIOA Training Provider			
Section	#	%	
Participants			
Planned Participants	0		
Total Participants	0		
Total Active Registrants	0		
Total Exitters	0		
Total	0		
Customer Engagement			
Number of Active Registrants with Service	0		
Individualized Career Service (ICS)	0		
Training Service	0		
Customer Activity			
No Case Management/Case Note in 30 Days	0		
Last activity greater than 60 days ago	0		
Last active service greater than 90 days ago	0		
Registrants with open Services for more than 6 months	0		
Registrants with open Services for more than 18 months	0		
Enrolled in LWIA Also	0		
Co-enrolled in LWIA90 Grants	0		

Co-enrolled in LWIA90 Grants	0
Co-enrolled in another title	0
Performance Indicator Measurements	
Total Training Participant	0
Total Participants with Measurable Skills Gain	0
Total Participants with a Credential but without a Measurable Skills Gain	0
30 days left to earn a Measurable Skills Gain	0
Total Never Enrolled in Training	0
Active Registrants Enrolled in Training	0
Training Exitters	0
Participants who have Not Exited and have Earned a Credential	0
Exitters that Earned a Credential	0
Training Exitters that have not earned a Credential	0
30 days left to earn Credential	0
Entered Employment at Exit	0
Entered Training Related Employment at Exit	0
Entered Training Related Employment 2nd Quarter after Exit	0
Entered Training Related Employment 4th Quarter after Exit	0
Exitters with Wages 2nd Quarter Post Exit	0
Total	

[illegible]

A Web Page

http://

WIOA PERFORMANCE ☒ DATA VALIDATION ☒ NEGOTIATED GOALS Hi, OMiller@siu.edu

## WIOA Customer Data Validation Review

2/10 Customers Complete

Review the Data Elements listed below by completing the following steps:

**Step 1.** Verify that each Data Element Record is correct.  
**Step 2.** Use the dropdown to identify which of the acceptable source documentation was used to verify each Data Element. If the Data Element Record is wrong select "Incorrect Data Reported" in the Source Documentation drop down.  
**Step 3.** Upload a copy of the source documentation used. If Data Element is wrong upload Source Documentation that contains the correct information and add a case note.

Name: Jane Doe  
DOB: 3/7/1993  
SSN: \*\*\*-\*\*-\*\*\*\*  
LWI#A: 20 - Land of Lincoln Workforce Alliance  
Program: WIOA Title I  
Certified Titles: 1A - Adult Low Income Career Services, 1A - Adult BSD Career Services  
Application Date: 1/19/2018  
Exit Date: 1/19/2018  
Career Planner: Jane Doe

Dropdown will include approved source documentation items, Incorrect Data Reporting, and Documentation is Missing. When Missing Documentation is selected the upload will not be required.

PRI# Data Element NO.	Data Element Name	Data Type/Element Record	Source Documentation	Upload Verification	Comments
900	Date of Program Entry	###/##/####	Electronic Record	Job-ID ElectronicRecord	<div>correct values entered into system documentation submitted successfully ✓ X</div>
901	Date of Program Exit	###/##/####	Select	Fetch File	Add Comment
923	Other Reasons for Exit	06 = Ineligible	Select	Fetch File	Add Comment
1303	Type of Training Service #1	12 = Job Readiness Training in conjunction with other training	Select	Fetch File	Add Comment
1310	Type of Training Service #2	01 = On the job Training (non-WIOA Youth)	Select	Fetch File	Add Comment
1315	Type of Training Service #3	00 = No Training Service	Select	Fetch File	Add Comment
1332	Participate in Postsecondary Education During Program Participation	0 = No, Did Not Participate in Postsecondary Education	Select	Fetch File	Add Comment
1401	Enrolled in Secondary Education Program	0 = No	Select	Fetch File	Add Comment
1406	Date Enrolled in Post Ed Education or Training Program Leading to a Recognized Postsecondary Credential	###/##/####	Select	Fetch File	Add Comment
1600	Employed in 1st Quarter After Exit Quarter	2 = Yes, Registered Apprenticeship	Select	Fetch File	Add Comment

A Web Page

http://

WIOA Customer Data Validation Review

Back to Customer List 2/10 Customers Complete

Review the Data Elements listed below by completing the following steps:

Step 1. Verify that each Data Element Record is correct.

Step 2. Use the dropdown to identify which of the acceptable source documentation was used to verify each Data Element. If the Data Element Record is wrong select "Incorrect Data Reported" in the Source Documentation drop down.

Step 3. Upload a copy of the source documentation used. If Data Element is wrong upload Source Documentation that contains the correct information and add a case note.

Name: John Doe  
DOB: 3/7/1993  
SSN: \*\*\*-\*\*-1234  
LWIA: 20 - Land of Lincoln Workforce Alliance  
Program: WIOA Title I  
Certified Titles: 1A - Adult Low Income Career Services, 1A - Adult BSD Career Services  
Application Date: 1/19/2019  
Exit Date: 1/1/2019  
Career Planner: Jane Doe

PRI# Data Element ID	Data Element Name	Data Type/Element Record	Source Documentation	Upload Verification	Comments
900	Date of Program Entry	MM/DD/YYYY	Electronic Record	JohnD_ElectronicRecordJan2018 X	Add Comment
901	Date of Program Exit	MM/DD/YYYY	Select	Fetch File	Add Comment
923					Add Comment
1303					Add Comment
1310					Add Comment
1315					Add Comment
1332					Add Comment
1401	Enrolled in Secondary Education Program	0 = No	Select	Fetch File	Add Comment

### Upload Verification

File Selected: JohnD\_ElectronicRecordJan2018 X

Source Type: Electronic Record

Select additional data elements you would like to associate this File and Source Type to:

- ☒ Date of Program Entry
- ☒ Date of Program Exit
- ☒ Other Reason for Exit
- ☐ Type of Training Service #1
- ☐ Type of Training Service #2
- ☐ Type of Training Service #3

Upload File

# Data Validation

# TEGL 7-18 & TEGl 23-19

Negotiated Goals S.A.M. Submit Goals

### Statistical Adjustment Model Summary

I am not sure if select programs is the best language to use here. The drop down would include Adult, Adult Comps, DW, DW Comps, Youth, and Youth Comps

Select a WIOA Title :      Select a Program:      Select an Organization:

Title I Show All State Wide

Print Export

TARGET OUTCOME

Indicator	Adult	DW	Youth	Measure
Entered Employment Rate 2nd Quarter After Exit	85.3%	88.8%	80.7%	Entered Employment or Enrollment in Education Rate 2 Quarter After Exit
Entered Employment Rate 4th Quarter After Exit	78.7%	87.7%	71.9%	Entered Employment or Enrollment in Education Rate 4th Quarter After Exit
Median Earnings 2nd Quarter After Exit	\$5269	\$6990	N/A	Median Earnings 2nd Quarter After Exit
Credential Attainment 4th Quarter After Exit	62.6%	76.8%	66.6%	Credential Attainment 4th Quarter After Exit

### PREDICTED OUTCOMES

Indicator	Adult	DW	Youth	Measure
Entered Employment Rate 2nd Quarter After Exit	77.2%	71.3%	76.0%	Entered Employment or Enrollment in Education Rate 2 Quarter After Exit
Entered Employment Rate 4th Quarter After Exit	75.8%	80.0%	58.9%	Entered Employment or Enrollment in Education Rate 4th Quarter After Exit
Median Earnings 2nd Quarter After Exit	\$5649	\$7964	N/A	Median Earnings 2nd Quarter After Exit
Credential Attainment 4th Quarter After Exit	63.9%	63.8%	69.5%	Credential Attainment 4th Quarter After Exit

PY 2011 - 2018 AVERAGE of SIMULATED WIOA OUTCOMES

Indicator	Adult	DW	Youth	Measure
Entered Employment Rate 2nd Quarter After Exit	74.8%	74.8%	74.0%	Entered Employment or Enrollment in Education Rate 2 Quarter After Exit
Entered Employment Rate 4th Quarter After Exit	76.8%	77.6%	60.8%	Entered Employment or Enrollment in Education Rate 4th Quarter After Exit
Median Earnings 2nd Quarter After Exit	\$5591	\$7741	N/A	Median Earnings 2nd Quarter After Exit
Credentialed Attainment 4th Quarter After Exit	66.9%	67.4%	69.7%	Credentialed Attainment 4th Quarter After Exit

## PY 2008 - 2018 SIMULATED WIOA OUTCOMES

Select A Measure Below:

The table and graph below will update as different measures are selected. the Program is associated to each measure in the drop down

2008	2009	2010	2011	2012	2013	2014	2015	2016	2017	2018
70.7%	73.1%	74.3%	70.4%	67.0%	62.0%	71.1%	73.3%	73.1%	78.1%	78.1%

Adult - Entered Employment Rate 2nd Quarter After Exit

### Statistical Adjustment Model Summary

Select a WIOA Title :

Title 1

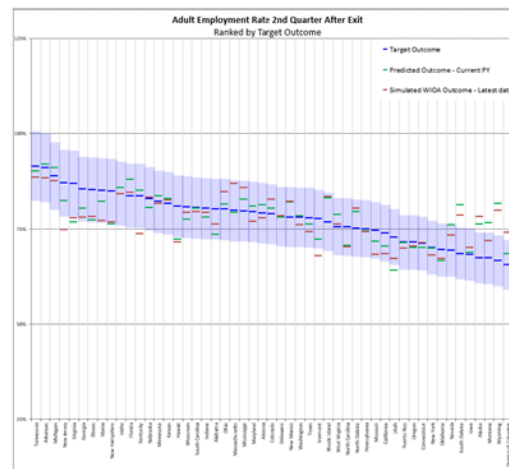
Print Export



Select a Measure:

Employment Rate 2nd Quarter After Exit	▼
----------------------------------------	---

I am not sure if select programs is the best language to use here. The drop down would include Adult, Adult Comps, DW, DW Comps, Youth, and Youth Comps



### Illinois Coefficients

Participant data used in forecasting (latest PY available)		2015		2015		2015		2015	
Measure		Employment Rate 2nd Quarter After Exit		Employment Rate 4th Quarter After Exit		Median Earnings 2nd Quarter After Exit		Credential Attainment	
Target Outcome		85.3%		78.7%		\$5,269		62.6%	
Predicted Outcome		77.2%		75.8%		\$5,649		61.9%	
Parameter	Latest PY data	Coefficient	Latest PY data	Coefficient	Latest PY data	Coefficient	Latest PY data	Coefficient	Latest PY data
Female	0.075	58.1%	0.012	61.1%	-1.940	60.6%	-0.003	57.7%	
Age 25 to 44	0.023	57.1%	0.050	58.0%	4.127	58.1%	-0.014	58.9%	
Age 45 to 54	-0.008	16.3%	-0.108	16.6%	437	15.3%	-0.055	16.3%	
Age 55 to 59	0.096	5.8%	0.021	5.8%	523	5.1%	0.337	5.1%	
Age 60+	-0.420	1.8%	-0.249	1.3%	662	1.5%	0.093	1.5%	
Hispanic ethnicity	-0.008	14.7%	-0.045	13.2%	-1.597	14.4%	-0.179	14.4%	
Race: Asian (not Hispanic)	0.109	3.8%	0.356	3.9%	1.276	3.3%	0.145	2.7%	
Race: Black (not Hispanic)	-0.023	49.6%	-0.021	49.3%	-818	49.1%	0.171	46.0%	
Race: Hawaiian/Pacific Islander (not Hispanic)	-0.003	0.2%	0.395	0.4%	1,527	0.2%	0.037	0.0%	
Race: American Indian or Native Alaskan(not Hispanic)	-0.083	0.4%	-0.041	0.5%	-2,991	0.4%	0.105	0.0%	
Sum of race (not Hispanic)	0.058	1.0%	0.077	1.0%	382	1.0%	-0.060	1.0%	
Highest grade completed: Less than High School graduate	-0.184	5.8%	-0.156	5.4%	-730	5.4%	-0.138	5.5%	
Highest grade completed: High school equivalency	0.021	54.2%	0.036	53.0%	-416	53.6%	0.057	54.0%	
Highest grade completed: Some college	0.103	19.9%	0.058	20.9%	988	20.7%	0.033	22.2%	
Highest grade completed: Certificate or Other Post-Secondary Degree	0.060	3.2%	-0.166	3.8%	2,745	3.5%	0.215	3.3%	
Highest grade completed: Associate degree	0.267	4.7%	0.312	4.0%	3,371	4.7%	-0.192	4.4%	
Highest grade completed: Bachelor degree	-0.002	10.0%	-0.137	10.0%	3,060	9.7%	-0.035	8.9%	
At least one postsecondary credential	0.052	27.4%	0.081	25.3%	1,022	28.1%	-0.060	32.2%	
Individual with a disability	-0.124	2.9%	-0.058	2.5%	-1,131	2.2%	0.302	2.2%	
Veteran	0.094	3.9%	0.100	4.2%	1,827	3.6%	-0.276	3.3%	
Had earnings in 2nd preprogram quarter	0.052	54.8%	0.051	53.4%	-2,306	59.9%	-0.005	57.7%	
Median wage in 2nd preprogram quarter	NA	NA	NA	NA	0.364	1.037	NA	NA	
Received services: Financially assisted under the Wagner-Peyser Act	-0.012	68.4%	-0.008	68.1%	-42	68.8%	-0.054	64.4%	
Learned English language proficiency	0.242	3.9%	0.039	3.9%	1,694	3.6%	0.167	2.2%	
Single parent	0.031	31.8%	0.041	32.2%	-471	33.7%	0.082	34.3%	
Low income	-0.003	90.8%	-0.002	90.8%	-701	89.6%	0.066	91.1%	
TANF recipient	-0.041	3.6%	-0.028	3.7%	1,175	3.7%	-0.121	3.3%	
Other public assistance recipient	-0.027	68.1%	-0.005	65.4%	6	67.6%	-0.103	71.1%	
Homeless	-0.099	2.3%	0.004	2.2%	360	1.7%	-0.086	2.2%	
Offender	-0.021	16.4%	-0.037	16.2%	-239	16.4%	-0.157	18.1%	
UI claimant, non-exhaustive	0.006	9.5%	0.002	13.0%	983	9.6%	0.056	8.8%	
UI exhaustive	-0.071	5.8%	-0.056	5.8%	-212	5.6%	0.247	5.6%	
Received supportive services	0.038	56.0%	0.030	56.1%	119	58.6%	-0.037	64.4%	
Received pre-employment payments	-0.067	0.1%	-0.040	0.2%	-264	0.1%	-0.047	0.1%	
Received intensive services	0.015	93.4%	0.011	93.4%	285	93.4%	0.136	98.0%	
Received training services	0.107	66.6%	0.050	64.5%	1,303	68.0%	0.014	68.0%	
Established Individual Training Account (ITA)	-0.028	57.2%	0.011	56.4%	50	58.1%	0.043	84.4%	
Pell grant recipient	-0.037	8.4%	0.039	9.2%	367	9.3%	0.227	14.4%	
Received pre-vocational activity services	-0.011	2.5%	-0.006	3.0%	175	2.1%	0.018	1.1%	
School status at participation	-0.033	2.8%	-0.012	2.5%	395	3.1%	-0.149	4.4%	
Average days in program	-0.00004	370	-0.00004	403	0.93842	360	-0.00018	400	
Natural Resources Employment	-1.402	0.5%	-0.881	0.5%	29,407	0.5%	2,726	0.0%	
Construction Employment	-1.709	3.7%	-1.154	3.7%	37,561	15.6%	1,041	3.1%	
Manufacturing Related Employment	-0.512	9.9%	-0.140	10.0%	24,325	9.9%	0.211	9.9%	
Information Services Employment	-1.084	1.9%	-0.458	1.9%	7,224	1.9%	-15.044	1.1%	
Financial Services Employment	-1.980	6.2%	-0.607	6.2%	5,436	6.2%	11.587	6.0%	
Healthcare and Business Services Employment	0.449	15.8%	0.444	15.8%	37,561	15.8%	-1.115	15.5%	
Educational, or Health Care Related Employment	-0.822	22.5%	-0.903	22.5%	26,407	22.5%	-0.447	22.5%	
Leisure, Hospitality, or Entertainment Related Employment	-1.224	10.6%	0.856	10.6%	15,154	10.6%	-0.544	10.6%	
Other Services Employment	-1.602	3.4%	-0.642	3.5%	18,447	3.4%	-4.825	3.3%	
Federal, State, or Local Government Employment	-1.138	4.4%	-0.561	4.4%	28,459	4.4%	0.047	4.4%	
Unemployment Rate Not Seasonally Adjusted	-1.360	6.0%	-0.801	6.0%	8,800	6.0%	0.000	6.0%	

# Statistical Adjustment Model by LWIA

Performance adjusted by Labor Market Information factors based on the Federal Model.



A Web Page

http://

PERFORMANCE DATA VALIDATION NEGOTIATED GOALS Hi, OMiller@siu.edu

WIOA Performance WIOA Quarterly Reporting

### Workforce Integrated Performance - Quarterly Reporting

Select a Reporting Year: PY18 - PY19 Select a WIOA Title: Title I Select an Organization: State Wide

Tips: Use the filters above to filter to a specific reporting year, title, or organization. Use the tiles to open the State Wide Performance Report for a specific program and quarter.

#### WIOA Adult

Quarter 1  
Statewide  
Performance  
Report  
(ETA-1969)

Quarter 2  
Statewide  
Performance  
Report  
(ETA-1969)

PENDING  
Quarter 3  
Statewide  
Performance  
Report  
(ETA-1969)

PENDING  
Quarter 4  
Statewide  
Performance  
Report  
(ETA-1969)

#### WIOA Youth

Quarter 1  
Statewide  
Performance  
Report  
(ETA-1969)

Quarter 2  
Statewide  
Performance  
Report  
(ETA-1969)

PENDING  
Quarter 3  
Statewide  
Performance  
Report  
(ETA-1969)

PENDING  
Quarter 4  
Statewide  
Performance  
Report  
(ETA-1969)

#### Dislocated Worker

Quarter 1  
Statewide  
Performance  
Report  
(ETA-1969)

Quarter 2  
Statewide  
Performance  
Report  
(ETA-1969)

PENDING  
Quarter 3  
Statewide  
Performance  
Report  
(ETA-1969)

PENDING  
Quarter 4  
Statewide  
Performance  
Report  
(ETA-1969)

Source: This information is brought to you by Illinois Workforce Development System & the Illinois Department of Commerce & Economic Opportunity

A Web Page

http://

PERFORMANCE DATA VALIDATION NEGOTIATED GOALS Hi, OMiller@siu.edu

WIOA Performance WIOA Quarterly Reporting

### Workforce Integrated Performance - Quarter 1

Select a Reporting Year: PY18 - PY19 Quarter 1 Select a WIOA Title: Title I Select a Workforce Devel: Adult

OMB Control Number: 1205-0021  
Expiration Date: 08-30-2021

ETB-9079

#### PY 2018 Qtr 9/30/2018 Performance Report for WIOA Adult

Page 1

REPORTING PERIOD COVERED: 7/1/2018-9/30/2018

Performance Items	Basic Career Services (after than self service)	Individualized Career Services	Training Services	Total Current Period	Total Previous Period
<b>A. SUMMARY INFORMATION</b>					
1. Total Clients (Cohort Period 7/1/2017-9/30/2018)	0	1,375	3,113	4,488	4,308
2. Total Participants Served (Cohort Period 10/1/2017-9/30/2018)	0	2,345	7,283	9,628	9,309
3. Total Reportable Individuals (Cohort Period 10/1/2017-9/30/2018)	0	2	1,961	1,961	1,556
<b>B. PARTICIPANT SUMMARY AND SERVICE INFORMATION (Cohort Period 10/1/2017-9/30/2018)</b>					
3					
1a. Male	0	1,050	2,581	3,631	3,788
1b. Female	0	1,280	4,411	5,691	5,496
2a. Hispanic/Latino	0	330	1,008	1,348	1,296
2b. American Indian or Alaskan Native	0	24	37	61	57
2c. Asian	0	151	210	361	346
2d. Black or African American	0	1,317	3,361	4,678	4,529
2e. Native Hawaiian or Other Pacific Islander	0	2	21	23	27
2f. White	0	630	3,091	3,729	3,591
2g. More Than One Race	0	18	79	97	88
3a. Eligible Veterans	0	74	155	229	226
3b. Individuals with a Disability	0	322	211	533	339
3c. Incarcerated Workers	0	4	7	11	11
3d. Unemployed Individuals	0	1,727	4,085	5,812	5,695
4a. Secondary School Graduate or Equivalent	0	1,273	3,969	5,242	5,823
4b. Completed 1 or more years of Postsecondary Education	0	303	1,429	1,732	1,721
4c. Postsecondary Certification, License, or Educational Certificate (non-degree)	0	74	350	424	387
4d. Associate's Degree	0	190	503	693	646
4e. Bachelor's Degree or Equivalent	0	266	533	799	771
4f. Advanced Degree Beyond Bachelor's Degree	0	76	143	219	220
<b>C. EMPLOYMENT BARRIERS (Cohort Period 10/1/2017-9/30/2018)</b>					
1. Displaced Homesteaders	0	2	4	6	
2. Low-income individuals	0	1,530	6,071	8,009	7,826
3. Older individuals	0	256	358	614	605
4. Ex-offenders	0	308	952	1,260	1,195
5. Homeless individuals or runaway youth	0	60	105	165	162
6. Current or former foster care youth	0	0	0	0	0
7. English language learners, individuals with low levels of literacy or facing substantial cultural barriers	0	1,151	2,830	3,981	3,863
8. Eligible migrant and seasonal farmworkers	0	0	0	0	0
9. Exhausting TANF within 2 years (Part A Title IV of the Social Security Act)	0	2	1	3	4
10. Single parents (including single pregnant women)	0	263	1,841	2,104	2,040
11. Long-term unemployed (27 or more consecutive weeks)	0	123	356	479	239

PY 2018 Qtr 9/30/2018 Performance Report for WIOA Adult

Page 2

REPORTING PERIOD COVERED: 7/1/2018-9/30/2018

Performance Items	Basic Career Services (after than self service)	Individualized Career Services	Training Services	Total Current Period	Total Previous Period						
<b>D. COVERAGE OF SERVICES (Cohort Period 10/1/2017-9/30/2018)</b>											
1. Employment Rate (Cohort Period 10/1/2018-9/30/2017)	100.0%	75.1%	79.0%	77.7%	77.3%						
2. Employment Rate (Cohort Period 7/1/2016-3/1/2017)	66.7%	74.4%	79.2%	77.7%	78.1%						
3. Median Earnings (Cohort Period 10/1/2016-9/30/2017)	\$10,160	\$4,952	\$7,398	\$8,481	\$8,543						
4. Credential Rate (Cohort Period 7/1/2016-3/1/2017)			75.9%	75.9%	77.0%						
5. Measurable Skill Gain (Cohort Period 10/1/2017-9/30/2018)											
<b>E. COVERAGE OF SERVICES (Cohort Period 10/1/2017-9/30/2018)</b>											
1. Covered Entrants				141							
2. Covered Entrants Who Received a Service During the Entry Period				141	100.0%						
3. Covered Entrants Who Received a Staff-Assisted Service During the Entry Period				141	100.0%						
<b>Common Call Programs. Please indicate by checking the box below each program below that utilizes a common call policy with this program in this state.</b>											
Program	Wagner Payson	Adults, Dislocated Workers, Youth	TAA	Job Corps	National Farmworker Labor Program (NFLP)	Indian and Native American Program (INA)	Reentry Employment Opportunities (Adult)	Reentry Employment Opportunities (Youth)	YouthBuild	HHS	SCSEP
Common Call?											
<b>ADDITIONAL COMMENTS</b>											

Participant information is based on data given at the point of entry into the program.  
 Services to Employment are determined at the point of entry into the program.  
 \*Credential Rate and Measurable Skill Gain do not apply to the Wagner Payson program.

**Public Burden Statement (1205-0021)**  
 Persons are not required to respond to this collection of information unless it displays a currently valid OMB control number. Respondent's reply to these reporting requirements is mandatory (Workforce Innovation and Opportunity Act, Section 136). Public reporting burden for this collection of information is estimated to average 30 minutes per response, including the time for reviewing instructions, searching existing data sources, gathering and maintaining the data needed, and completing and reviewing the collection of information. Send comments regarding this burden estimate to the Office of Policy Development and Research • U.S. Department of Labor • Bureau of Labor Statistics • 200 Constitution Ave., NE • Washington, DC 20035.

Do NOT send the completed application to this address.

Source: This information is brought to you by Illinois Workforce Development System & the Illinois Department of Commerce & Economic Opportunity

# New Visibility of Certified Quarterly Reports

Readily available quarterly performance reports for any program or LWIA.

Goal: Drill down to individual participant level data/customer detail.

# Questions?

*Workforce Innovation Opportunity Act (WIOA)*