

DuPage County Human Services



Transportation Resources

2007



DuPage County Human Services

421 N. County Farm Road
Wheaton, IL 60187

(630) 407-6500

1-800-942-9412

(630) 407-6502 (TDD)

(630) 407-6501 (FAX)

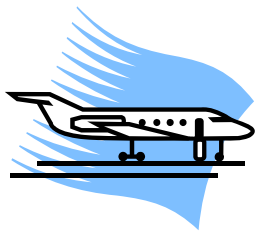
www.dupageco.org

TABLE OF CONTENTS

General Numbers	3
DuPage County Ride DuPage, Paratransit, and Pilot II Programs	4
ADA (Americans with Disabilities Act) and CTA Paratransit	5
Illinois Dept. of Healthcare and Family Services – First Transit	5
PACE	5
Parking for Persons with Disabilities	6
City / Village Transportation Resources	
Addison	7
Aurora	7
Bartlett	8
Bensenville	8
Bloomington	8
Bolingbrook	8
Burr Ridge	9
Carol Stream	9
Clarendon Hills	10
Darien	10
Downers Grove	10
Elmhurst	11
Glendale Heights	11
Glen Ellyn	12
Hanover Park	12
Hinsdale	12
Itasca	13
Lemont	13-14
Medinah	14
Lisle	13
Lombard	13
Naperville	14
Oak Brook	14
Roselle	14
St. Charles	15
Villa Park	15
Warrenville	16
Wayne	16
West Chicago	16
Westmont	16
Wheaton	17
Willowbrook	17
Winfield	17
Wood Dale	17
Woodridge	18
Township Transportation Programs	19-20
Volunteer Transportation Services	21
Discounts	21
Transportation Services for Senior Citizens	22

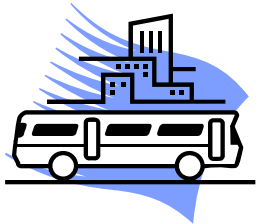
TRANSPORTATION

Transportation has consistently been a problem in the suburban area. Traveling for medical attention, social services, education and employment can be challenging. Many resources for senior citizens are available from your municipality, park district, township or the county and are listed on the following pages. If you are interested in traveling by air, bus or train, inquire about discounts from the following commercial resources.



Airlines

Check the yellow pages for individual airline numbers.



Greyhound Lines

1-800-231-2222
1-800-345-3109 (TDD)
www.greyhound.com



Amtrak

1-800-USA-RAIL
(1-800-872-7245)
1-800-523-6590 TDD/TTY
www.amtrak.com



Metra

(312) 322-6777
(312) 322-6774 (TDD)
www.metrarail.com

RIDE DU PAGE

Ride DuPage is a transportation service that operates 7 days per week, 24-hours a day. Organizations such as municipalities, townships, social service organizations, and employers can participate by subsidizing transportation for their clients or constituents.

Sponsoring agencies determine the eligibility for their riders. For example, a municipality may wish to establish eligibility based on age or disability, while a social service organizations may establish eligibility based on income.

As of July 2006 the participating sponsors are DuPage County Human Services, DuPage County Senior Services, the DuPage Veteran's Assistance Commission, the Village of Glen Ellyn, Lisle Township, the City of Naperville, and Naperville Township. Plans are developing to add sponsors throughout the County.

THE DU PAGE COUNTY PARATRANSIT PROGRAM

The DuPage County Paratransit Program, a Ride DuPage sponsor, offers curb-to-curb transportation to county residents who meet low-income guidelines. Travel is provided to medical appointments within DuPage County, to Hines Veterans Hospital and DuPage County Human Services at 421 N. County Farm Road, Wheaton, IL. Eligibility guidelines must be met and applicants must pre-register. There is a charge of \$4 each way to the 421 and 111 N. County Farm Road Buildings, all other destinations are \$1.50 for the first 6 miles, then \$1.50 each additional mile. To register, seniors should call **DuPage County Senior Services at (630) 407-6500 or 1-800-942-9412.**

THE DU PAGE COUNTY PILOT II PROGRAM

Pilot II is a subsidized transportation program utilizing taxicabs to provide services to senior citizens and persons with disabilities. The program allows participants to purchase discount coupons from sponsor agencies. Arrangements for the taxi ride are made directly with the cab company. Individual sponsoring agencies decide the eligibility requirements and specific rules for the participants they subsidize. Those interested must enroll through a participating sponsor agency. Lift-equipped vehicles are available. For further information, please call **DuPage County Human Services (630) 407-6500 or 1-800-942-9412** or <http://www.dupageco.org/humanr/humanservices/transportation>.



ADA (Americans with Disabilities Act) and CTA Paratransit
(312) 917-4357
(312) 917-1338
1-888-405-2065 (TDD)

The Regional Transportation Authority (RTA) is responsible for registration and the determination of eligibility for PACE Regional ADA Paratransit Services. The RTA can also tell you where you can register for the ADA Paratransit ID card. Eligible riders may travel with one companion at no charge. If space permits, more than one companion may accompany the passenger, but are required to pay the full fare. All trips must be scheduled at least one day in advance.

ILLINOIS DEPARTMENT OF HEALTHCARE AND FAMILY SERVICES
(IDHFS)/FIRST TRANSIT

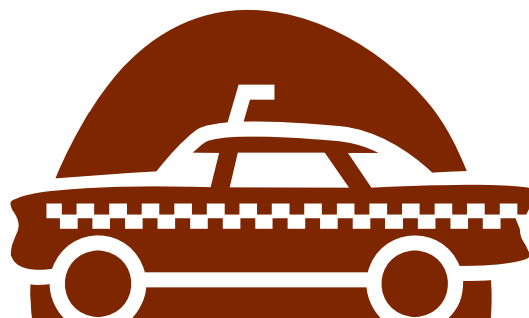
Provides rides to medical appointments for seniors and disabled persons receiving Medicaid benefits. To arrange transport call **1-877-725-0569** with your Medicaid ID number, date, time, location and phone number of medical appointment, no less than 24 hours in advance.

PACE (Suburban Bus Division of the RTA)
 550 W. Algonquin Road, Arlington Heights, IL 60005
(847) 364-7223
(847) 364-5093 (TDD)



Pace has two programs that offer curb-to-curb services in DuPage County. These are:

- **ADA Paratransit Service** provides transportation to persons with disabilities who meet regional eligibility criteria.
- **Dial-A-Ride Services** provide transportation for senior citizens, persons with disabilities, and in some cases, to the general public.



PARKING FOR PERSONS WITH DISABILITIES

Standard, vanity and personalized license plates with disability parking and permanent and temporary parking cards are available through the Secretary of State's office. For further information, contact:

Office of the Secretary of State
Senior and Community Services
501 S. Second Street
Room 541, Howlett Building
Springfield, IL 62756
1-800-252-2904
(217) 782-2887
(312) 814-2665
(217) 782-7758
www.cyberdriveil.com



DUPAGE COUNTY TRANSPORTATION RESOURCES



DuPage County, Pace, township and municipality transportation services are listed on the following pages. Eligibility, service areas and fees vary. Contact the program(s) servicing your area for additional information.

<p>VILLAGE OF ADDISON</p> <p><i>Addison Township</i> (630) 530-8161</p> <p><i>Bloomingtondale Township</i> (630) 529-7715</p>	<p>Addison Township Pilot II</p>	<p>(630) 530-8161 Ext. 140</p>	<p>Serves Addison Township residents 65+ and persons with disabilities. Trips can be taken 24 hours a day throughout DuPage County and to Alexian Brothers Hospital. (See page 4) Pilot II ID card required and must be Addison Township resident. (Goes anywhere)</p>
	<p>Addison Township Curb-to-Curb Transit Service</p>	<p>(630) 350-8161</p>	<p>Serves Addison Township residents 65+ and persons with disabilities. Lift-equipped vehicles available. For trips within township borders and to other sites. Call M-F, 8:00 A.M. - 4:30 P.M.</p>
	<p>Bloomingtondale Township Dial-A-Ride</p>	<p>1-888-713-7445</p>	<p>Serves Bloomingtondale Township residents 65+ and persons with disabilities. For trips within township borders. Call M-F, 8:00 A.M. – 5:00 P.M.</p>
<p>CITY OF AURORA</p>	<p>Winfield Township Seniors & Disabled Bus</p>	<p>(630) 231-9474</p>	<p>Serves residents 55+ and persons with disabilities. No RTA or ADA card needed. Call M-F 8:30 A.M. – 5:00 P.M. and Sat 9:00 A.M.-12:00 noon.</p>
	<p>Naperville Township Ride DuPage</p>	<p>(630) 357-8058</p>	<p>Serves residents 65+ and persons with disabilities. RTA card required for persons under 60 years of age. Hours are M-F 8:30 A.M. – 4:30 P.M.</p>
	<p>Naperville Township Special Services Van</p>	<p>(630) 697-2766</p>	<p>Emergency Services only, 1st come, 1st served. Hours are M-F 9:00 A.M. – 4:00 P.M.</p>

<p>VILLAGE OF BARTLETT</p> <p><i>Wayne Township</i> (630) 231-7140</p>	<p>Wayne Township Dial-A-Ride</p> <p>Wayne Township Pilot II</p>	<p>1-800-713-7445</p> <p>(630) 231-7140</p>	<p>Serves Wayne Township residents and offers reduced rates for persons 65+ and students. For trips within Wayne Township plus Central DuPage Hospital and St. Charles Mall. Hours are M-F 9:00 A.M. – 4:00 P.M.</p> <p>Serves Wayne Township residents 65+ and persons with disabilities. Trips can be taken 24 hours a day throughout DuPage County and to Elgin Hospitals. (See page 4) Hours are M-F 8:30 A.M. – 4:30 P.M.</p>
<p>VILLAGE OF BENSENVILLE</p> <p><i>Addison Township</i> (630) 530-8161</p>	<p>Addison Township Curb-to-Curb Van</p> <p>Addison Township Pilot II</p> <p>Village of Bensenville Dial-A-Bus</p>	<p>(630) 350-8161</p> <p>(630) 530-8161 Ext. 140</p> <p>(630) 350-3425</p>	<p>Serves Addison Township residents. Lift-equipped vehicles available. For trips within township borders and to other sites. Call M-F, 8:00 A.M. – 3:30 P.M.</p> <p>Serves Addison Township residents 65+ and persons with disabilities. Trips can be taken 24 hours a day throughout DuPage County and to Alexian Brothers Hospital. (See page 4) (Goes anywhere)</p> <p>Serves all Bensenville residents. Trips must be scheduled one hour in advance for destinations requiring a specific arrival time. Trips with flexible arrival times may be made 30 minutes in advance. Reservations appreciated 24-hours in advance for wheelchair trips.</p>
<p>VILLAGE OF BLOOMINGDALE</p> <p><i>Bloomington Township</i> (630) 529-7715</p>	<p>Bloomington Township Dial-A-Ride</p>	<p>1-800-713-7445</p>	<p>Serves Bloomington Township residents 65+ and persons with disabilities. For trips within township borders. Call M-F, 8:00 A.M. – 5:00 P.M.</p>
<p>VILLAGE OF BOLINGBROOK</p> <p><i>Lisle Township</i> (630) 968-2087</p>	<p>Lisle/Naperville Ride DuPage</p>	<p>(630) 968-2087 Ext. 211</p>	<p>Serves residents of Lisle Township, Naperville Township and City of Naperville residents 65+ and persons with disabilities. Lift-equipped vehicles available. Trips can be taken 24-hours a day, 7 days a week. Register at Lisle, or Naperville Township offices.</p>

<p>VILLAGE OF BURR RIDGE</p> <p><i>Downers Grove Township</i> (630) 968-0451</p>	<p>Downers Grove Township Dial-A-Ride</p> <p>Village of Burr Ridge Pilot II</p>	<p>(630) 968-6408</p> <p>(630) 654-8181</p>	<p>Serves Downers Grove Township residents 65+ and persons with disabilities. For trips within the Township borders. Pre-registration is required.</p> <p>Serves Burr Ridge residents 60+ and persons with disabilities. Lift-equipped vehicles available. For local trips and to O'Hare and Midway airports. Trips can be taken 24 hours a day throughout DuPage County. (See page 4)</p>
<p>VILLAGE OF CAROL STREAM</p> <p><i>Bloomington Township</i> (630) 529-7715</p> <p><i>Milton Township</i> (630) 668-1616</p> <p><i>Wayne Township</i> (630) 231-7140</p>	<p>Bloomington Township Dial-A-Ride</p> <p>Village of Carol Stream Pilot II</p> <p>Milton Township Ride DuPage</p> <p>Wayne Township Dial-A-Ride</p> <p>Wayne Township Pilot II</p>	<p>1-800-713-7445</p> <p>(630) 665-7050</p> <p>1-800-713-7445 (If you have an RTA card) (630) 668-1616 (If you do not have an RTA card)</p> <p>1-800-713-7445</p> <p>(630) 231-7140</p>	<p>Serves Bloomington Township residents 65+ and persons with disabilities. For trips within township borders. Call M-F, 8:00 A.M. – 5:00 P.M.</p> <p>Serves Carol Stream residents 60+ and persons with disabilities. Trips can be taken 24 hours a day throughout DuPage County. (See page 4)</p> <p>Serves Milton Township residents 65+ and persons with disabilities. For trips within township borders. Call M-F, 8:00 A.M. - 5:00 P.M.</p> <p>Serves Wayne Township resident's 65+, persons with disabilities and students. For trips within Wayne Township plus Central DuPage Hospital and St. Charles Mall. Call M-F, 8:00 A.M. – 5:00 P.M.</p> <p>Serves Wayne Township residents 60+. Lift-equipped vehicles available. Trips can be taken 24 hours a day throughout DuPage County and to Elgin Hospitals. (See page 4)</p>

<p>VILLAGE OF CLARENDON HILLS</p> <p><i>Downers Grove Township</i> (630) 968-0451</p>	<p>Downers Grove Township Dial-A-Ride</p>	<p>(630) 968-6408</p>	<p>Serves residents of Downers Grove Township. For trips within township borders. Call M-F, 8:30 A.M. – 4:00 P.M.</p>
<p>CITY OF DARIEN</p> <p><i>Downers Grove Township</i> (630) 968-0451</p>	<p>Darien Township Pilot II</p> <p>Downers Grove Township Dial-A-Ride</p>	<p>(630) 852-5000</p> <p>(630) 968-6408</p>	<p>Serves City of Darien residents 65+ and persons with disabilities. (See page 4)</p> <p>Serves residents of Downers Grove Township. For trips within township borders. Call M-F, 8:00 A.M. – 4:00 P.M.</p>
<p>VILLAGE OF DOWNERS GROVE</p> <p><i>Downers Grove Township</i> (630) 968-0451</p> <p><i>Lisle Township</i> 630-968-2087</p> <p><i>Milton Township</i> (630) 668-1616</p> <p><i>York Township</i> (630) 620-2400</p>	<p>Downers Grove Township Dial-A-Ride</p> <p>Village of Downers Grove Subsidized Taxi Program</p> <p>Lisle/Naperville Ride DuPage</p> <p>Milton Township Ride DuPage</p> <p>York Township Senior Transportation Service</p>	<p>(630) 968-6408</p> <p>(630) 434-5533</p> <p>(630) 968-2087 Ext. 211</p> <p>1-800-713-7445 (If you have an RTA card) (630) 668-1616 (If you do not have an RTA card)</p> <p>(630) 620-2413</p>	<p>Serves residents of Downers Grove Township. Call M-F, 8:00 A.M. – 4:00 P.M.</p> <p>Serves Downers Grove residents 65+ and persons with disabilities. For trips within township borders. Pre-purchase coupons at the Village Hall. Yearly registration required.</p> <p>Serves residents of Lisle Township, Naperville Township and City of Naperville residents 65+ and persons with disabilities. Lift-equipped vehicles available. Trips can be taken 24-hours a day, 7 days a week. Register at Lisle, or Naperville Township offices.</p> <p>Serves Milton Township residents 65+ and persons with disabilities. Lift-equipped vehicles available. Trips can be taken 24-hours a day, 7 days a week. Register at Milton Township offices</p> <p>Serves York Township residents including persons 55+. Wheel chair clients Tue. & Thurs. only. Fares vary. Coupon books available. For trips within township borders. Call M-F, 8:15 A.M. - 3:15 P.M. Reservations must be made at least two working days in advance.</p>

<p>CITY OF ELMHURST</p> <p><i>Addison Township</i> (630) 530-8161</p> <p><i>York Township</i> (630) 620-2400</p>	<p>Addison Township Pilot II</p>	<p>(630) 530-8161 Ext. 140</p>	<p>Serves Addison Township residents 65+ and persons with disabilities. Trips can be taken 24 hours a day throughout DuPage County and to Alexian Brothers Hospital. (See page 4) (Goes anywhere)</p>
	<p>Addison Township Curb-to-Curb Transit Service</p>	<p>(630) 350-8161</p>	<p>Serves Addison Township residents. Lift-equipped vehicles available. For trips within and outside township borders. Call M-F, 8:00 A.M. – 3:30 P.M.</p>
	<p>City of Elmhurst Subsidized Taxi Program</p>	<p>(630) 530-3017</p>	<p>Serves Elmhurst residents 65+ and persons with disabilities. \$1.40 for one-way, 21 one-way trips per month. Trips within Elmhurst city limits. Call M-F, 8:30 A.M. - 5:00 P.M. ID card good for 4 years.</p>
	<p>City of Elmhurst Pilot II</p>	<p>(630) 530-3017</p>	<p>Serves Elmhurst residents 65+ and persons with disabilities. Travel may go beyond Elmhurst city limits. Trips can be taken 24 hours a day throughout DuPage County. (See page 4)</p>
	<p>York Township Senior Transportation Service</p>	<p>(630) 620-2413</p>	<p>Serves York Township residents including persons 55+. Wheel chair clients Tue. & Thurs. only. Fares vary. Coupon books available. For trips within township borders. Call M-F, 8:15 A.M. - 3:15 P.M. Reservations must be made at least two working days in advance.</p>
<p>VILLAGE OF GLENDALE HEIGHTS</p> <p><i>Bloomington Township</i> (630) 529-7715</p> <p><i>Milton Township</i> (630) 668-1616</p>	<p>Bloomington Township Dial-A-Ride</p>	<p>1-800-713-7445</p>	<p>Serves Bloomington Township residents 65+ and persons with disabilities. Call M-F, 8:00 A.M. – 5:00 P.M.</p>
	<p>Milton Township Dial-A-Ride</p>	<p>1-800-713-7445 (If you have an RTA card) (630) 668-1616 (If you do not have an RTA card)</p>	<p>Serves Milton Township residents 65+ and persons with disabilities. For trips within township borders. Call M-F, 8:00 A.M. - 5:00 P.M.</p>

<p>VILLAGE OF GLEN ELLYN</p> <p><i>Milton Township</i> (630) 668-1616</p> <p><i>York Township</i> (630) 620-2400</p>	<p>Village of Glen Ellyn Ride DuPage</p> <p>Milton Township Dial-A-Ride</p> <p>York Township Senior Transportation Service</p>	<p>(630) 858-6343</p> <p>1-800-713-7445 (If you have an RTA card) (630) 668-1616 (If you do not have an RTA card)</p> <p>(630) 620-2413</p>	<p>Serves Glen Ellyn residents 60+ and persons with disabilities. Lift-equipped vehicles available. Trips can be taken 24 hours a day 7 days per week. Register at Glen Ellyn Senior Center.</p> <p>Serves Milton Township residents 65+ and persons with disabilities. For trips within township borders. Call M-F, 8:00 A.M. - 5:00 P.M.</p> <p>Serves York Township residents including persons 55+. Wheel chair clients Tue. & Thurs. only. Fares vary. Coupon books available. For trips within township borders. Call M-F, 8:15 A.M. - 3:15 P.M. Reservations must be made at least two working days in advance.</p>
<p>VILLAGE OF HANOVER PARK</p> <p><i>Bloomington Township</i> (630) 529-7715</p> <p><i>Wayne Township</i> (630) 231-7140</p>	<p>Bloomington Township Dial-A-Ride</p> <p>Wayne Township Dial-A-Ride</p> <p>Wayne Township Pilot II</p>	<p>1-800-713-7445</p> <p>1-800-713-7445</p> <p>(630) 231-7140</p>	<p>Serves Bloomington Township residents 65+ and persons with disabilities. Call M-F, 8:00 A.M. – 5:00 P.M.</p> <p>Serves Wayne Township residents 65+. Lift-equipped vehicles available. Trips can be taken 24 hours a day throughout DuPage County.</p> <p>Serves Wayne Township residents 60+ and persons with disabilities. Lift-equipped vehicles available. Trips can be taken 24 hours a day throughout DuPage County and to Elgin Hospitals. (See page 4)</p>
<p>CITY OF HINSDALE</p> <p><i>Downers Grove Township</i> (630) 968-0451</p>	<p>Downers Grove Township Dial-A-Ride</p>	<p>(630) 968-6408</p>	<p>Serves Downers Grove Township residents 65+ and persons with disabilities. For trips within the Township borders. Pre-registration is required.</p>



VILLAGE OF ITASCA	Addison Township Curb-to-Curb Transit Service	(630) 350-8161	Serves Addison Township residents. Lift-equipped vehicles available. For trips within township borders and to other sites. Call M-F, 8:00 A.M. - 3:30 P.M.
<i>Addison Township</i> (630) 530-8161	Addison Township Pilot II	(630) 530-8161 Ext. 140	Serves Addison Township residents 65+ and persons with disabilities. Trips can be taken 24 hours a day throughout DuPage County and to Alexian Brothers Hospital. (See page 4) (Goes anywhere)
<i>Bloomingtondale Township</i> (630) 529-7715	Bloomingtondale Township Dial-A-Ride	1-800-713-7445	Serves Bloomingtondale Township residents 65+ and persons with disabilities. Call M-F, 8:00 A.M. - 5:00 P.M.
VILLAGE OF LEMONT	Downers Grove Township Dial-A-Ride	(630) 968-6408	Serves Downers Grove Township residents 65+ and persons with disabilities. For trips within the Township borders. Pre-registration is required.
<i>Downers Grove Township</i> (630) 968-0451			
VILLAGE OF LISLE	Lisle/Naperville Ride DuPage	(630) 968-2087 Ext. 211	Serves residents of Lisle Township, Naperville Township and City of Naperville residents 65+ and persons with disabilities. Lift-equipped vehicles available. Trips can be taken 24-hours a day, 7 days a week. Register at Lisle, or Naperville Township offices.
<i>Lisle Township</i> (630) 968-2087	Village of Lisle	(630) 271-4100	Serves residents of incorporated Lisle who are 65+ and persons with disabilities. \$50 coupons – Client pays \$12.50 per month. Cabs go anywhere. Call M-F, 7:00 A.M. - 5:00 P.M.
<i>Milton Township</i> (630) 668-1616			
VILLAGE OF LOMBARD	Addison Township Pilot II	(630) 530-8161 Ext. 140	Serves Addison Township residents 65+ and persons with disabilities. Trips can be taken 24 hours a day throughout DuPage County and to Alexian Brothers Hospital. (Goes anywhere)
<i>Addison Township</i> (630) 530-8161	Addison Township Curb-to-Curb Transit Service	(630) 350-8161	Serves Addison Township residents. Lift-equipped vehicles available. For trips within township borders and to other sites. Call M-F, 8:00 A.M. - 3:30 P.M.

VILLAGE OF LOMBARD CONT.	Milton Township Dial-A-Ride	1-800-713-744	Serves Milton Township residents 65+ and persons with disabilities. Call M-F, 8:00 A.M. - 5:00 P.M.
<i>Milton Township (630) 668-1616</i>	Village of Lombard Taxi Subsidy Program	(630) 620-5700	Serves incorporated Lombard residents 65+ and persons with disabilities. Call Monday, 8:00 A.M. - 7:00 P.M. / Tuesday, Thursday, and Friday, 8:00 A.M. - 4:30 P.M.
<i>York Township (630) 620-2400</i>	York Township Senior Transportation Service	(630) 620-2413	Serves York Township residents including persons 55+. Wheel chair clients Tue. & Thurs. only. Fares vary. Coupon books available. For trips within township borders. \$2 for Senior Center, \$4 for Kohl's, \$3 for Doctors appt. Call M-F, 8:15 A.M. - 3:15 P.M. Reservations must be made at least two working days in advance.
VILLAGE OF MEDINAH	Bloomingdale Township Dial A Ride	1-800-713-7445	Serves the general public Mon. – Fri. 8:00 A.M. – 5:00 P.M.
CITY OF NAPERVILLE	Naperville Township Special Services Van	(630) 697-2766	Emergency service for Naperville Township residents 65+ and persons with disabilities. Trips are on a first come, first serve basis. Travel M-F, 9:00 A.M. - 4:00 P.M. to Naperville, Aurora, and Warrenville.
	Lisle/Naperville Ride DuPage	(630) 968-2087 Ext. 211	Serves residents of Lisle Township, Naperville Township and City of Naperville residents 65+ and persons with disabilities. Lift-equipped vehicles available. Trips can be taken 24-hours a day, 7 days a week. Register at Lisle, or Naperville Township offices.
VILLAGE OF OAK BROOK	York Township Senior Transportation Service	(630) 620-2413	Serves York Township residents including persons 55+. Wheel chair clients Tue. & Thurs. only. Fares vary. Coupon books available. For trips within township borders. \$2 for Senior Center, \$4 for Kohl's, \$3 for Doctors appt. Call M-F, 8:15 A.M. - 3:15 P.M. Reservations must be made at least two working days in advance.
<i>York Township (630) 620-2400</i>			

<p>VILLAGE OF ROSELLE</p> <p><i>Bloomingtondale Township</i> (630) 529-7715</p>	<p>Bloomingtondale Township Dial-A-Ride</p>	<p>1-800-713-7445</p>	<p>Serves Bloomingtondale Township residents 65+ and persons with disabilities. Call M-F, 8:00 A.M. – 5:00 P.M.</p>
<p>CITY OF ST. CHARLES</p> <p><i>Wayne Township</i> (630) 231-7140</p>	<p>Wayne Township Dial-A-Ride</p> <p>Wayne Township Pilot II</p>	<p>1-800-713-7445</p> <p>(630) 231-7140</p>	<p>Serves Wayne Township residents and offers reduced rates for persons 65+ and students. For trips within Wayne Township plus Central DuPage Hospital and St. Charles Mall.</p> <p>Serves Wayne Township residents 60+. Trips can be taken 24 hours a day throughout DuPage County and to Elgin Hospitals. (See page 4)</p>
<p>VILLAGE OF VILLA PARK</p> <p><i>Addison Township</i> (630) 530-8161</p> <p><i>York Township</i> (630) 620-2400</p>	<p>Addison Township Pilot II</p> <p>Addison Township Curb-to-Curb Transit Service</p> <p>Villa Park Subsidized Taxi Program</p> <p>York Township Senior Transportation Service</p>	<p>(630) 530-8161 Ext. 140</p> <p>(630) 350-8161</p> <p>(630) 834-8500</p> <p>(630) 620-2413</p>	<p>Serves Addison Township residents 65+ and persons with disabilities. Trips can be taken 24 hours a day throughout DuPage County and to Alexian Brothers Hospital. (See page 4) (Goes anywhere)</p> <p>Serves Addison Township residents. Lift-equipped vehicles available. For trips within township borders and to other sites. Call M-F, 8:00 A.M. - 3:30 P.M.</p> <p>Serves INCORPORATED Villa Park residents 65+ and persons with disabilities. Fare \$1 through Villa Park only. Apply in person for pass. Picture ID required. Call M-F, 9:00 A.M. – 5:00 P.M.</p> <p>Serves York Township residents including persons 55+. Wheel chair clients Tue. & Thurs. only. Fares vary. Coupon books available. For trips within township borders. \$2 for Senior Center, \$4 for Kohl's, \$3 for Doctors appt. Call M-F, 8:15 A.M. - 3:15 P.M. Reservations must be made at least two working days in advance.</p>

CITY OF WARRENVILLE <i>Naperville Township</i> (630) 357-8058 <i>Winfield Township</i> (630) 231-3591	Winfield Township Senior and Disabled Bus	(630) 231-9474	Serves Winfield Township residents 55+ and persons with disabilities. 24-hour advance notice required.
	City of Warrenville Pilot II	(630) 393-9427	Serves Warrenville residents 65+ and persons with disabilities. Lift-equipped vehicles available. Trips can be taken 24 hours a day throughout DuPage County. (See page 4)
	Lisle/Naperville Ride DuPage	(630) 968-2087 Ext. 211	Serves residents of Lisle Township, Naperville Township and City of Naperville residents 65+ and persons with disabilities. Lift-equipped vehicles available. Trips can be taken 24-hours a day, 7 days a week. Register at Lisle, or Naperville Township offices.
VILLAGE OF WAYNE <i>Wayne Township</i> (630) 231-7140	Wayne Township Dial-A-Ride	1-800-713-7445	Serves Wayne Township residents and offers reduced rates for persons 65+ and students. For trips within Wayne Township plus Central DuPage Hospital and St. Charles Mall.
	Wayne Township Pilot II	(630) 231-7140	Serves Wayne Township residents 60+. Trips can be taken 24 hours a day throughout DuPage County and to Elgin Hospitals. (See page 4)
CITY OF WEST CHICAGO <i>Wayne Township</i> (630) 231-7140 <i>Winfield Township</i> (630) 231-3591	Wayne Township Dial-A-Ride	1-800-713-7445	Serves Wayne Township residents and offers reduced rates for persons 65+ and students. For trips within Wayne Township plus Central DuPage Hospital and St. Charles Mall.
	Wayne Township Pilot II	(630) 231-7140	Serves Wayne Township residents 60+. Trips can be taken 24 hours a day throughout DuPage County and to Elgin Hospitals. (See page 4)
	Winfield Township Senior and Disabled Bus	(630) 231-9474	Serves Winfield Township residents 55+ and persons with disabilities. 24-hour advance notice required.



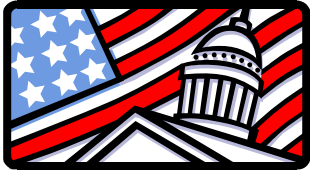
<p>VILLAGE OF WESTMONT</p> <p><i>Downers Grove Township</i> (630) 968-0451</p>	<p>Township of Downers Grove Dial-A-Ride</p> <p>Village of Westmont Subsidized Taxi Program</p>	<p>(630) 968-6408</p> <p>(630) 829-4400</p>	<p>Serves Downers Grove Township residents 65+ and persons with disabilities. For trips within the Township borders. Pre-registration is required.</p> <p>Serves Westmont residents 65+ and persons with disabilities. Pre-purchase discount coupons at the Village Hall.</p>
<p>CITY OF WHEATON</p> <p><i>Milton Township</i> (630) 668-1616</p>	<p>Milton Township Dial-A-Ride</p> <p>City of Wheaton Pilot II</p>	<p>1-800-713-7445 (If you have an RTA card) (630) 668-1616 (If you do not have an RTA card)</p> <p>(630) 260-2000</p>	<p>Serves Milton Township residents 65+ and persons with disabilities. Call M-F, 8:00 A.M. - 5:00 P.M.</p> <p>Serves Wheaton residents 65+ and persons with disabilities. Trips can be taken 24 hours a day throughout DuPage County. (See page 4)</p>
<p>VILLAGE OF WILLOWBROOK</p> <p><i>Downers Grove Township</i> (630) 968-0451</p>	<p>Downers Grove Township Dial-A-Ride</p> <p>Village of Willowbrook Pilot II</p>	<p>(630) 968-6408</p> <p>(630) 323-8215</p>	<p>Serves Downers Grove Township residents 65+ and persons with disabilities. For trips within the Township borders. Pre-registration is required.</p> <p>Serves Willowbrook residents 65+ and persons with disabilities. Pre-purchase coupons through the village. Trips can be taken 24 hours a day throughout DuPage County. (See page 4)</p>
<p>VILLAGE OF WINFIELD</p> <p><i>Milton Township</i> (630) 668-1616</p> <p><i>Winfield Township</i> (630) 231-3591</p>	<p>Milton Township Dial-A-Ride</p> <p>Winfield Township Senior and Disabled Bus</p>	<p>1-800-713-7445 (If you have an RTA card) (630) 668-1616 (If you do not have an RTA card)</p> <p>(630) 231-9474</p>	<p>Serves Milton Township residents 65+ and persons with disabilities. Call M-F, 8:00 A.M. - 5:00 P.M.</p> <p>Serves Winfield Township residents 55+ and persons with disabilities. 24-hour advance notice required.</p>



<p>CITY OF WOOD DALE</p> <p><i>Addison Township</i> (630) 530-8161</p>	<p>Addison Township Pilot II</p> <p>Addison Township Curb-to-Curb Transit Service</p> <p>City of Wood Dale Dial-A-Ride</p>	<p>(630) 530-8161 Ext. 140</p> <p>(630) 350-8161</p> <p>(630) 787-3764</p>	<p>Serves Addison Township residents 65+ and persons with disabilities. Trips can be taken 24 hours a day throughout DuPage County and to Alexian Brothers Hospital. (See page 4) (Goes anywhere)</p> <p>Serves Addison Township residents. Lift-equipped vehicles available. For trips within and outside of township borders. Call M-F, 8:00 A.M. – 3:30 P.M.</p> <p>Serves Wood Dale and unincorporated Wood Dale residents for trips within Wood Dale City Limits, except for local hospitals. Rides \$3 or \$4 each way. Purchase passes.</p>
<p>VILLAGE OF WOODRIDGE</p> <p><i>Downers Grove Township</i> (630) 968-0451</p> <p><i>Lisle Township</i> (630) 968-2087</p>	<p>Downers Grove Township Dial-A-Ride</p> <p>Lisle/Naperville Ride DuPage</p> <p>Village of Woodridge Pilot II</p>	<p>(630) 968-6408</p> <p>(630) 968-2087 Ext. 211</p> <p>(630) 852-7000</p>	<p>Serves Downers Grove Township residents 65+ and persons with disabilities. For trips within the Township borders. Pre-registration is required.</p> <p>Serves residents of Lisle Township, Naperville Township and City of Naperville residents 65+ and persons with disabilities. Lift-equipped vehicles available. Trips can be taken 24-hours a day, 7 days a week. Register at Lisle, or Naperville Township offices.</p> <p>Serves Woodridge residents 60+ and persons with disabilities. Trips can be taken 24 hours a day throughout DuPage County, the Village of Woodridge and immediately adjacent locations. (See page 4)</p>



TOWNSHIP TRANSPORTATION PROGRAMS



The following list of Township resources is also included within each city or village listing in the preceding pages.

Addison Township Pilot II (630) 530-8161 Ext. 140

Serves Addison Township residents 65+ and persons with disabilities. Trips can be taken 24 hours a day throughout DuPage County and to Alexian Brothers Hospital. (Goes anywhere - you pay ½ fare)

Addison Township Curb-to-Curb Transit Service (630) 350-8161

Serves Addison Township residents. Lift-equipped vehicles available. For trips within township borders, and to other sites. Call Monday - Friday, 8:00 A.M. - 3:30 P.M.

Bloomington Township Dial-A-Ride 1-800-713-7445

Serves Bloomington Township residents 65+ and persons with disabilities. For trips within township borders. Call Monday - Friday, 8:00 A.M. - 5:00 P.M.

Downers Grove Township Dial-A-Ride (630) 968-6408

Serves Downers Grove Township residents 65+ and persons with disabilities. For trips within the township borders. Pre-registration is required.

Lisle/Naperville Ride DuPage (630) 968-2087

Serves Lisle Township, the City of Naperville, and Naperville Township residents 65+ and persons with disabilities. Operates 7 days per week, 24-hours per day.

Milton Township Dial-A-Ride

1-800-713-7445 (If you have an RTA card) - **(630) 668-1616** (If you do not have an RTA card)

Serves Milton Township residents 65+ and persons with disabilities. For trips within township borders. Call Monday - Friday, 8:00 A.M. - 5:00 P.M.

Naperville Township Special Services Van
(630) 697-2766

Emergency service for Naperville Township residents 65+, and persons with disabilities. Trips are available Monday – Friday, 9:00 A.M. to 4:00 P.M. on a first come, first serve basis. (Service is cutting back and will only take clients who don't qualify for Ride DuPage)

Wayne Township Dial-A-Ride
1-800-713-7445

Serves Wayne Township residents and offers reduced rates for people 65+ and students. For trips within Wayne Township plus Central DuPage Hospital and St. Charles Mall.

Wayne Township Pilot II
(630) 231-7140

Serves Wayne Township residents 60+. Lift-equipped vehicles available. Trips can be taken 24 hours a day throughout DuPage County and to Elgin Hospitals.

Winfield Township Senior and Disabled Bus
(630) 231-9474

Serves Winfield Township residents 55+ and persons with disabilities. 24-hour advance notice required.

York Township Senior Transportation Service
(630) 620-2413

Serves York Township residents including persons 55+. Wheel chair clients Tue. & Thurs. only. Fares vary. Coupon books available. For trips within township borders. \$2 for Senior Center, \$4 for Kohl's, \$3 for Doctors appt. Call M-F, 8:15 A.M. - 3:15 P.M. Reservations must be made at least two working days in advance.



VOLUNTEER TRANSPORTATION SERVICES

American Cancer Society (630) 932-1141

Volunteers provide transportation to and from treatment centers with an American College of Surgeons approved cancer program (depending on driver availability). A 5-day notice (1 week) is needed.

Downers Grove FISH (630) 415-3083

Provides volunteer transportation primarily for emergency or medical needs. 24 to 48-hour advance notice required.

DISCOUNTS

Automobile Insurance Discount - Legislation requires insurance companies to give a discount on automobile liability insurance premiums to driver's age 55 and older upon completion of an approved defensive driving program. To find insurance companies who honor this discount, contact the **Illinois Department of Insurance, (312) 814-2420**. (Ask for Insurance)

AARP's 55 Alive / Mature Driving Class is approved for the discount. For information regarding scheduling, contact **either**:

- ◆ **DuPage County Human Services, Senior Citizen Services
(630) 407-6500 or 1-800-942-9412**
- ◆ **AARP Program Department
55 Alive / Mature Driving
8750 W. Bryn Mawr Avenue Suite 600 Chicago, IL 60631
1-866-295-7276 AARP Midwest Office
www.aarp.org, click Drivers Safety – enter zip code for nearest location**

License Plates and Drivers License Discounts - If you qualify for Circuit Breaker, you can save \$54 on license plate fees. Also drivers, age 69 and over, pay a reduced rate of \$5 for their drivers license, which is good for four years. Drivers age 81 through 86 receive a two-year license for only \$2. Those 87 and older are tested annually and the license is free. For additional information, call the **Office of the Secretary of State**, toll-free, at **1-800-252-8980**.

TRANSPORTATION SERVICES



The following businesses provide transportation services for DuPage County senior citizens. Fees for services may vary depending on destination, etc. If possible, it is advisable to call at least one week before the date that transportation is needed. Payment may be required at the time of service.

Comfort Coach

P.O. Box 447, Addison, IL 60101
(630) 285-1900

Provides a hydraulic lift to assist with transporting someone in using a wheelchair. Please provide 2-3 day notice.

Illinois Medi-car

395 W. Lake Street, Elmhurst, IL 60126
(630) 530-1500

Platinum Care, Inc.

P.O. Box 2553
Naperville, IL 60567
(630) 778-8585
platinumcareinc.com

RTA/Pace/Metra Routing Information

(630) 836-7000
www.rtachicago.com

Range of Motion

26W175 Meadowview Court, Wheaton, IL 60187
(630) 871-8696

Please provide 24-hour notice. Door to door, wheelchair accessible.