

# Microsoft Elevate America Online Course Instructions

*Note: you must have an email account before you can access Elevate America online courses. If you do not have an email address, follow the instructions at the bottom of this document. It is quick and easy.*

## Elevate America instructions to:

- Enter Elevate America online course vouchers for the first time ..... page 1 - 5
- Use Elevate America vouchers to add additional courses .....page 6 - 7
- Return to Elevate America courses you have already started .....page 8 - 9

Follow these steps to enter Elevate America online course vouchers for the first time:

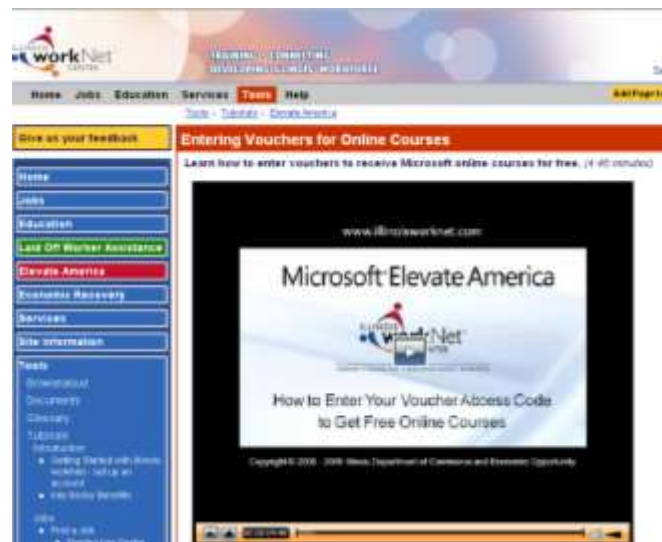


Step 1: Print this instruction checklist and complete each step.

Go to: <http://www.illinoisworknet.com>, click on “**Individuals**” and log into your Illinois workNet account. Click on “**Click here for instructions on how to use the voucher(s)**” at the top of the page. Follow the instructions carefully.

Step 2: Click on “**Watch a video to learn how to enter vouchers and access Microsoft courses**” to learn how to enter vouchers and access Microsoft courses.

[http://www.illinoisworknet.com/vos\\_portal/residents/en/Tools/Tutorials/ElevateAmerica/v7\\_EA\\_entervouchers.htm](http://www.illinoisworknet.com/vos_portal/residents/en/Tools/Tutorials/ElevateAmerica/v7_EA_entervouchers.htm)



Step 3: Click on **“View Voucher Instructions,”** which appears next to each assigned voucher.

Click on **“Watch the Elevate America Computer Requirements video”** to learn how to check a computer to see if it meets Microsoft online course system requirements.

([http://www.illinoisworknet.com/vos\\_portal/residents/en/Tools/Tutorials/ElevateAmerica/v2\\_EA\\_computerReqAndAssistance.htm](http://www.illinoisworknet.com/vos_portal/residents/en/Tools/Tutorials/ElevateAmerica/v2_EA_computerReqAndAssistance.htm)); select **“click here to verify that your computer meets minimum technical requirements”** (<https://www.microsoftlearning.com/help/systemRequirements.aspx>), click the **“Scan My System”** button on the top right corner of the System Requirements page. (Note: Internet Explorer Browser 6 or higher is required to access courses.) If your computer does not meet the technical requirements, find a location near you that offers public access to computers on Illinois workNet. Make sure that you have speakers or headphones available to you as you take your courses.

Step 4: **Create your Elevate America Online Course Member Name and Password** to access Microsoft Elevate America Online Courses (this is different from your Illinois workNet Username). ([http://www.illinoisworknet.com/vos\\_portal/residents/en/ElevateAmerica/CreateWindowsLiveId.htm](http://www.illinoisworknet.com/vos_portal/residents/en/ElevateAmerica/CreateWindowsLiveId.htm)) Complete the information and click the **“Create Account”** button. **This will NOT create a valid email address or Illinois workNet account.** By completing this form you are creating your Microsoft Elevate America Online Course Member Name and Password.

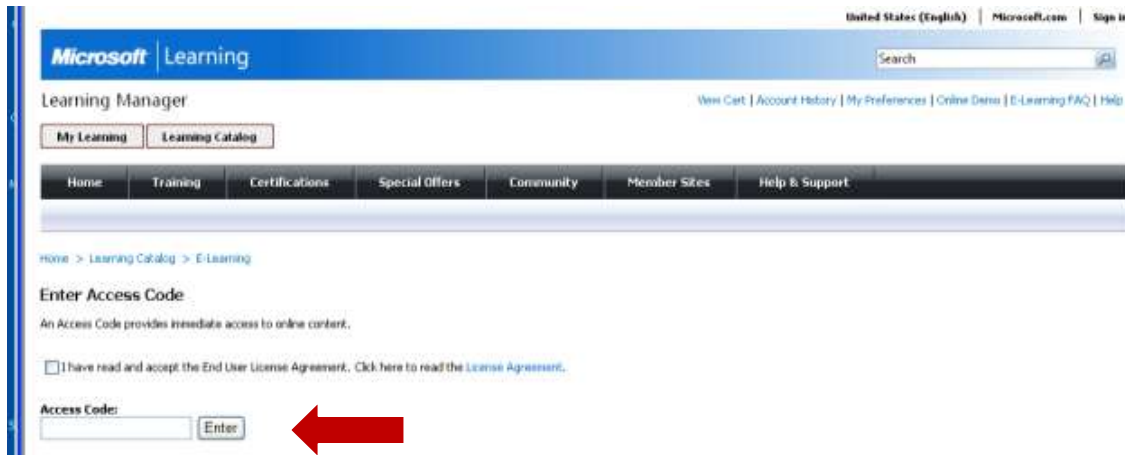
The screenshot shows a web form titled "Create your Microsoft Windows Online Course Member Name". It includes a navigation menu on the left with options like Home, Jobs, Education, Services, Tools, and Help. The main content area has a header "Create your Microsoft Windows Online Course Member Name" and instructions for existing and new users. There are three input fields: "Member Name\*" (pre-filled with "@ea.illinoisworknet.com"), "Password\*", and "Confirm Password\*". Each field has specific requirements for characters and length. A "Create Account" button is located at the bottom of the form.

Be sure to write down your member name and password here. Keep this information handy and do not share it with others. You will use this information every time you return to your course(s).

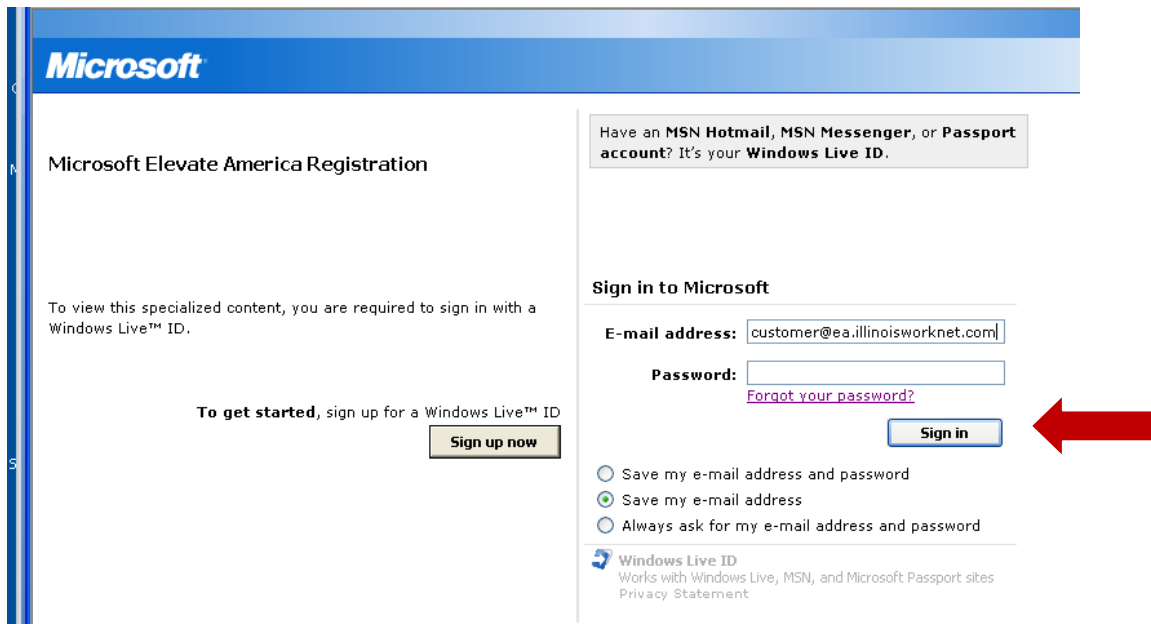
Member Name : \_\_\_\_\_ @ea.illinoisworknet.com

Password: \_\_\_\_\_

Step 5: Follow the **“enter your voucher number (access code)”** link to agree to the terms of use, then copy and paste (or type) your voucher number into the access code box (use capital letters). Click the **“Enter”** button.

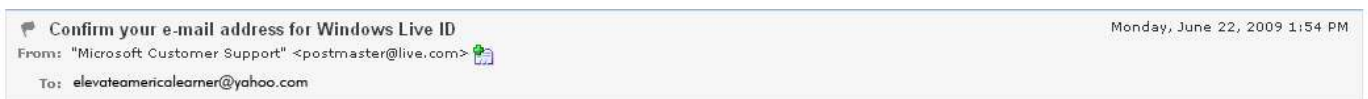


Step 6: On the right side of the page where it says **“Sign in to Microsoft,”** type in your member name and password, and then click the **“Sign in”** button.



Step 7: Now you are at the Microsoft Learning registration page. Complete the registration form and click "I accept" at the bottom of the page. **On the next registration page enter additional information and verify your email address by following these steps:**

1. Open a new window, and go to your email account inbox.
2. Click on the Microsoft email message (subject: Verification e-mail).
3. Click on the link in the body of the message to verify your email address.
4. You will be asked to "Sign In," so enter your member name and password and sign in.
5. See that you have successfully verified your email and click "Continue."
6. Minimize the new Microsoft E-Learning page that opens and go back to the original screen and click continue.



Hello, [elevateamericalearner@yahoo.com](mailto:elevateamericalearner@yahoo.com)

Thank you for signing up for a Windows Live ID. Please follow the instructions below to confirm that you signed up for this account, or to cancel the account if you did not sign up.

#### CONFIRM ACCOUNT

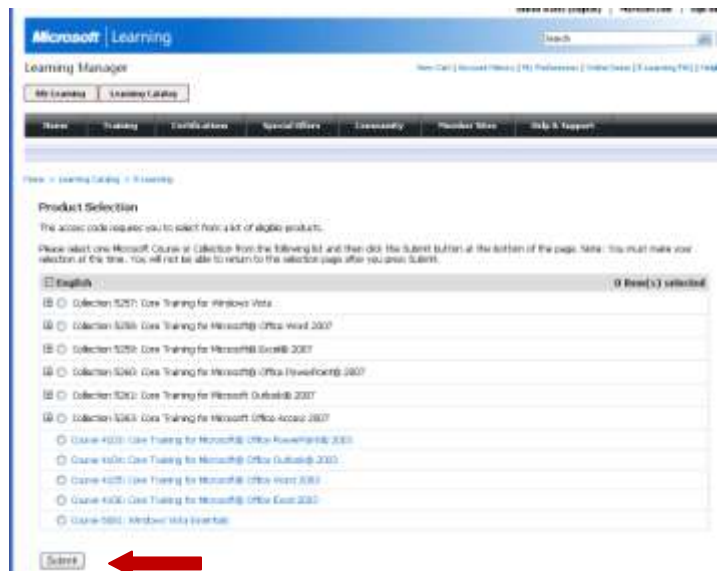
To help prevent unauthorized account creation, we need you to confirm your e-mail address. We will use this e-mail address to send you important messages about your account. Also, some Windows Live ID sites and services may require a confirmed e-mail address.

To confirm this e-mail address, select and copy the following link. Open a browser and paste the link in the address bar. Press Enter or Return on your keyboard and follow the instructions that display.

 <https://accountservices.msn.com/EmailPage.srf?emailid=97b9ea40344215f7&ed=BwLaJPIrPRvke1q6fpHGUiJw58zVwJpHeA91wD92cNfzI9%2B4aBuMiPacnYid&lc=1033&urlnum=0>

Step 8: You are automatically directed to the Learning Manager. You will be required to select one Microsoft Course or Collection of Courses from a list and then click the submit button at the bottom of the page.

Note: You must make your selection at this time, you will not be able to return to this selection page after you click "submit." After clicking "submit," you will see the course or collection of courses that you have used your voucher to select.



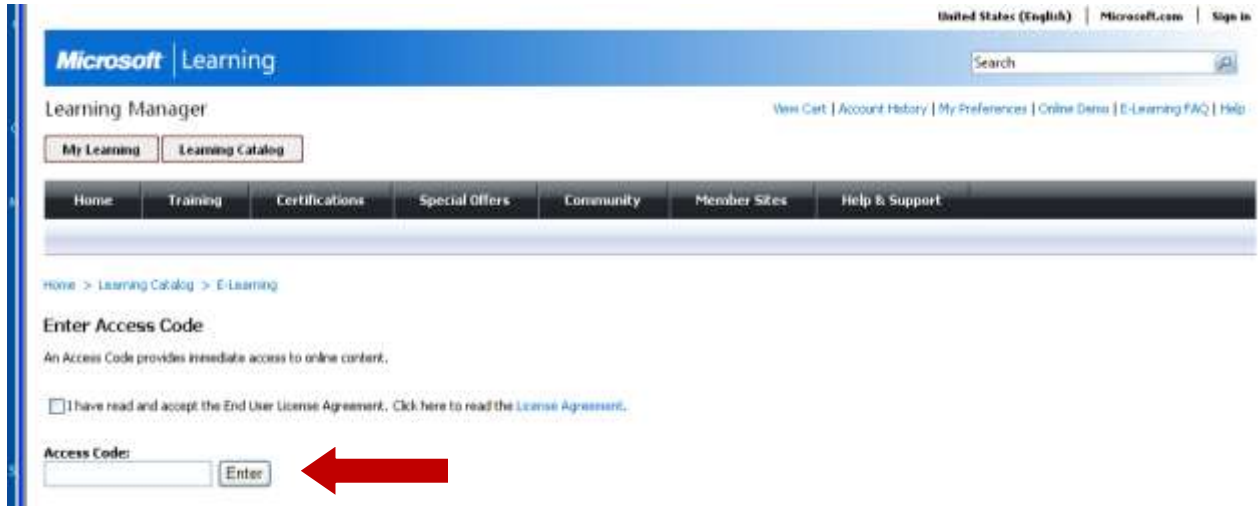
Begin your courses by clicking on the course name. You don't have to complete them all in one sitting; finish what you can and then click "**Sign Out**" on the top right corner of the page.

*All Elevate America vouchers must be used by October 31, 2009.*

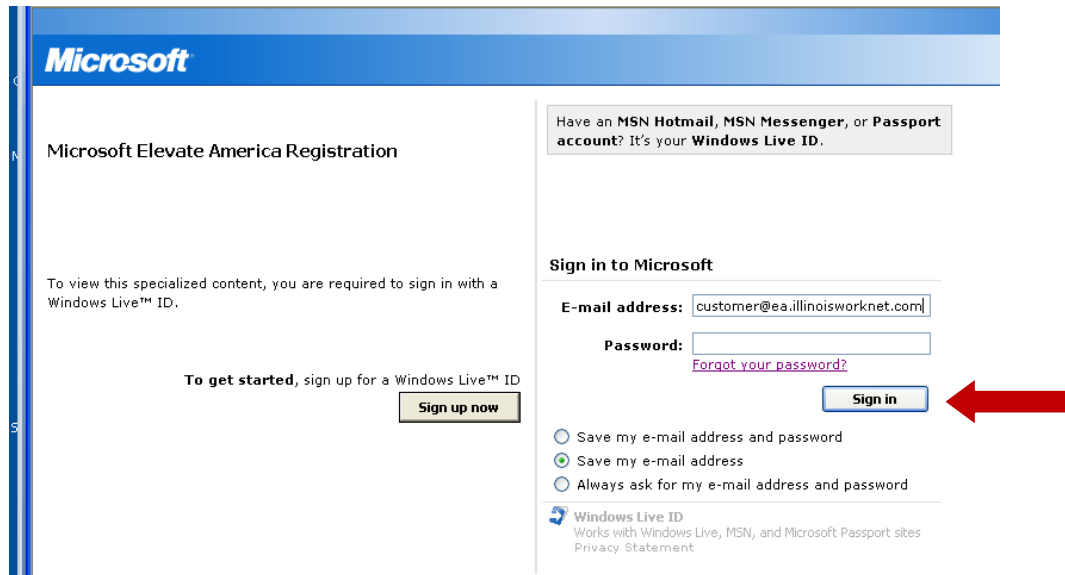
**Follow these steps to use Microsoft Elevate America vouchers to add additional courses:**

Once a member name and password have been set up and a voucher number has been used to load a course, the following steps are required to add additional courses to an account. The following steps need to be repeated each time a voucher is used to add a course collection to an account.

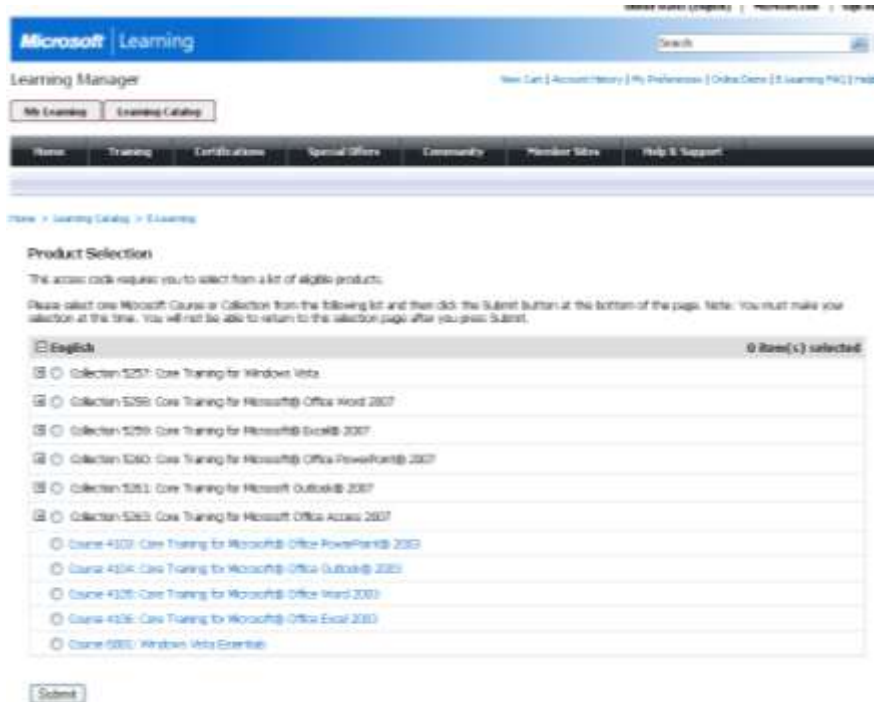
Step 1: Go to <https://www.microsoftlearning.com/elearning/entercode.aspx> and then copy and paste (or type) your voucher number into the Microsoft Access Code box. Click the **“Enter”** button.



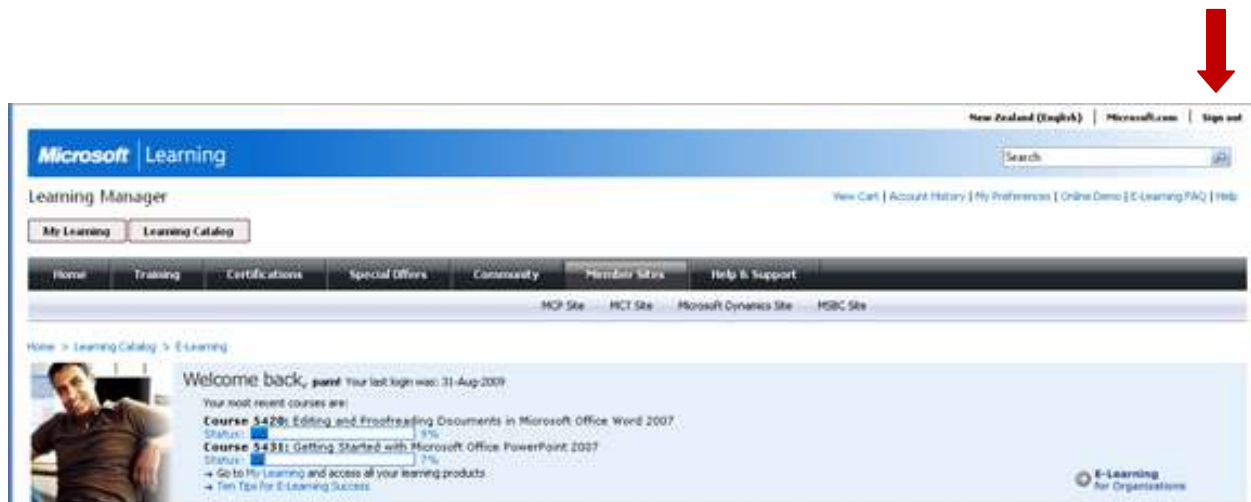
Step 2: If you are not already signed in, enter your Member Name ( \_\_\_\_\_ @ ea.illinoisworknet.com), password, and click **"Sign in."**



Step 3: You are automatically directed to the Learning Manager. You will be required to select one Microsoft Course or Collection of Courses from a list and then click the "**submit**" button at the bottom of the page. Note that you must make your selection at this time, you will not be able to return to this selection page after you click "**submit.**" Make sure you select a course collection that you have not already added to your account. After clicking "**submit,**" you will see the course or collection of courses that you have used your voucher to select.



Begin your courses by clicking on the course name. You don't have to complete them all in one sitting; finish what you can and then click "**Sign Out**" on the top right corner of the page.



*All Elevate America vouchers must be used by October 31, 2009.*

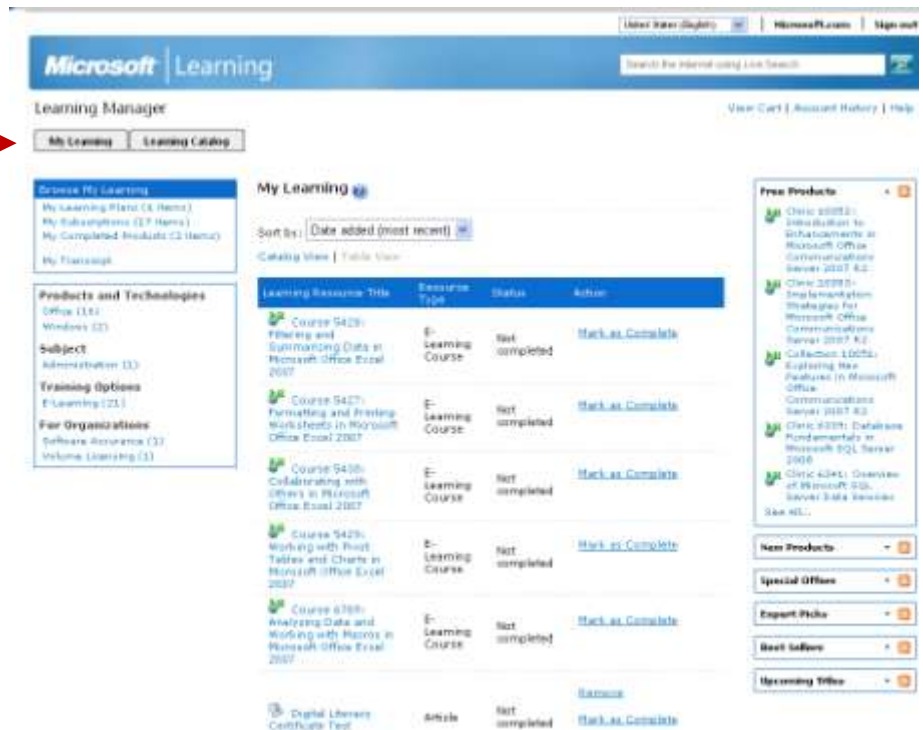
Follow these steps to return to Elevate America courses you have already started:

Step 1: Log in to <https://www.microsoftlearning.com/>

Step 2: Click on the **"Sign In"** link located at the top right corner of page and enter your member name (\_\_\_\_\_@ea.elevateamerica.com) and password. The system may remember your login or prompt you to select an automatic login.



Step 3: Now click on the **"My Learning"** button located on the top left the page.



Step 4: You will see a list of your courses in the middle of the page.

Step 5: Click on the course name you want to enter.

Step 6: From the course page, click the "**Begin**" button to direct you to your course.



*All Elevate America vouchers must be used by October 31, 2009.*

---

**IMPORTANT NOTE:** Access to the courses you selected by entering your Elevate America Voucher Access Codes is **FREE**. There is **NO COST** to access and complete the courses you selected by entering your voucher access code. IF YOU SEE ANY PRODUCT OFFERS, YOU CAN IGNORE THEM.

Use the following 1-800 number and email address if you have any questions about Microsoft Elevate America. (800) 636-7544

E-mail: [e-learn@microsoft.com](mailto:e-learn@microsoft.com) Click here for additional Microsoft Elevate America customer service information.

#### **Instructions for setting up an Email account:**

If you do not have an email account, setting up a free e-mail account is quick and easy. Listed below are some of the most commonly used free email services. Also, you can use your proper email address as your user name when setting up a My Illinois workNet account.

- Hotmail (Windows Live ID): Got to <http://www.hotmail.com> and click on "Sign Up" and complete the required information.

- Yahoo Mail: Go to <http://www.yahoo.com> and click on "Sign Up" next to the words Free Mail. Complete the required information.

- Google Gmail: Go to <http://www.google.com> and click on "Sign in." Click on *Create an Account*, and complete the required information.

Copyright © 2006 - 2009 Illinois Department of Commerce and Economic Opportunity  
Illinois workNet Centers are an equal opportunity employer/program. At Illinois workNet Centers, auxiliary aids and services are available upon request to individuals with disabilities. All voice telephone numbers on this website may be reached by persons using TTY/TDD equipment by calling TTY (800) 785-6055 or 711.