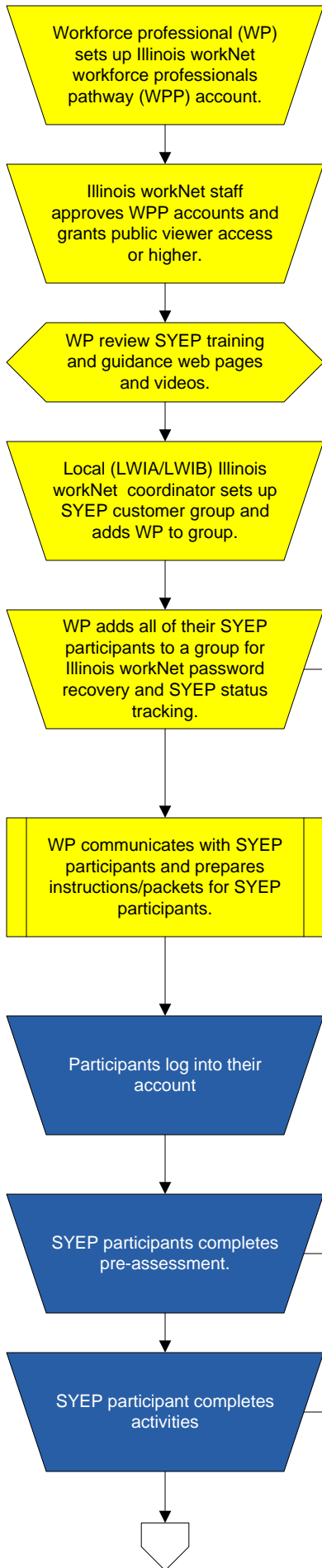
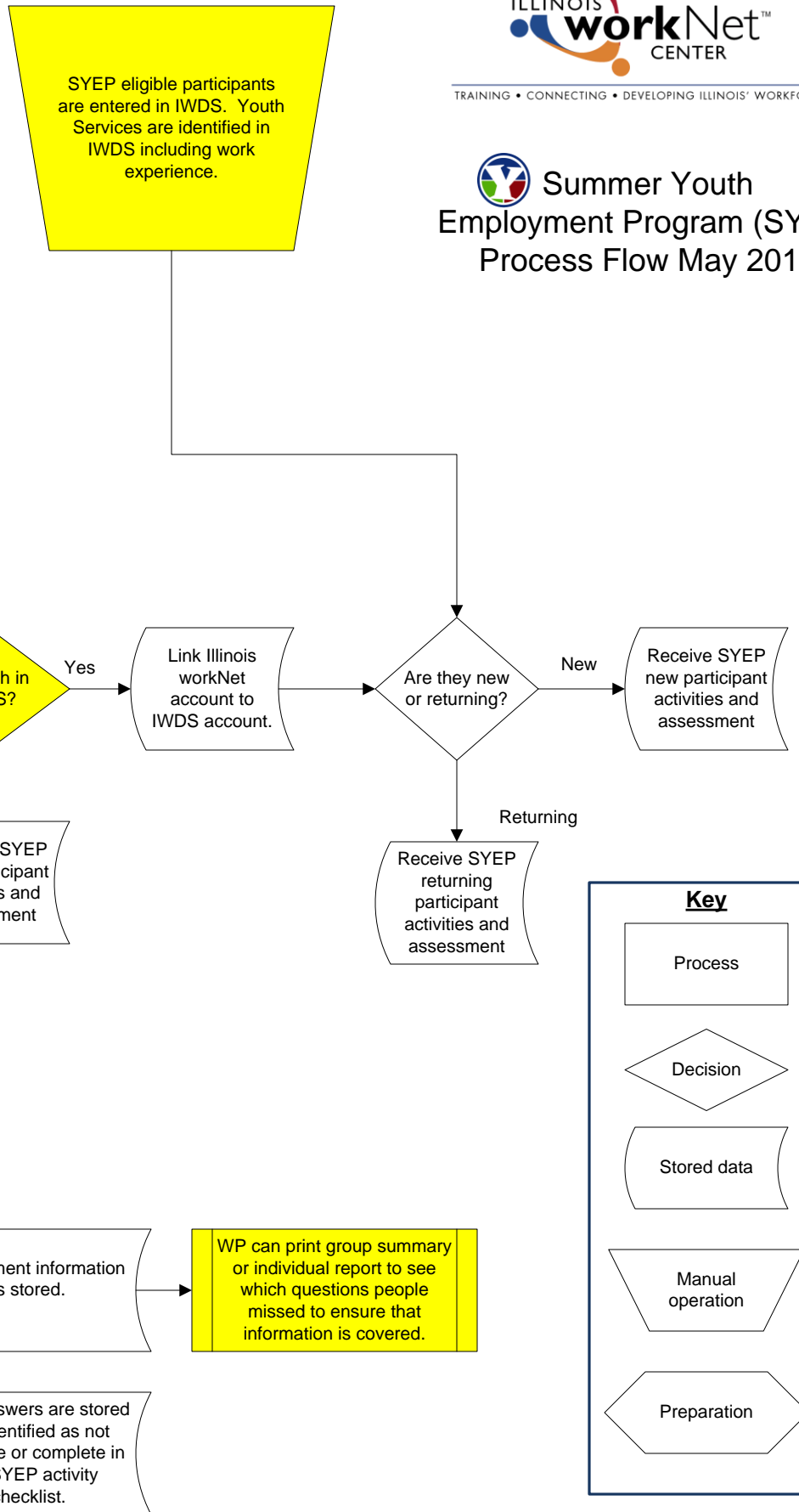


## Illinois workNet Portal Process

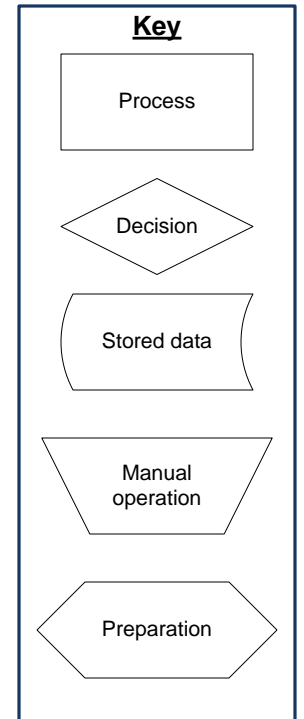


## IWDS Process



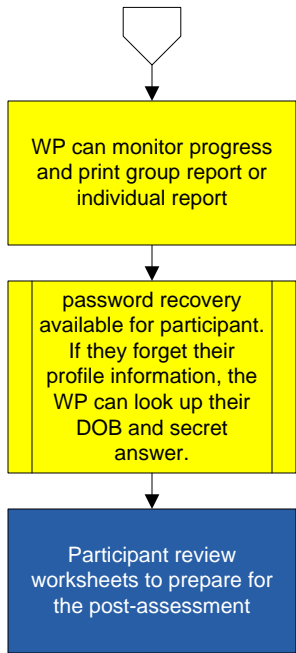
TRAINING • CONNECTING • DEVELOPING ILLINOIS' WORKFORCE

## Summer Youth Employment Program (SYEP) Process Flow May 2010



# Summer Youth Employment Program (SYEP) Process Flow

## Illinois workNet Portal Process



### Definitions:

**Customer Group:** Illinois workNet tool for organizing groups of Illinois workNet Individuals accounts and allowing specific Illinois workNet workforce professional account access to a predetermined set of information and tracking. Depending on the type of information that is accessed the individual account holder is notified when they are added to a group to either:

- request access to specific information (i.e., interests inventory information), or
- to notify them that specific workforce professionals will have access to their information (i.e., SYEP assessments).

**SYEP Participant:** A youth eligible to participate in the Summer Youth Employment Program that has been entered into IWDS.

**Workforce Professional:** Partner or program staff that have an Illinois workNet workforce professionals account with public viewer or higher access to resources.

