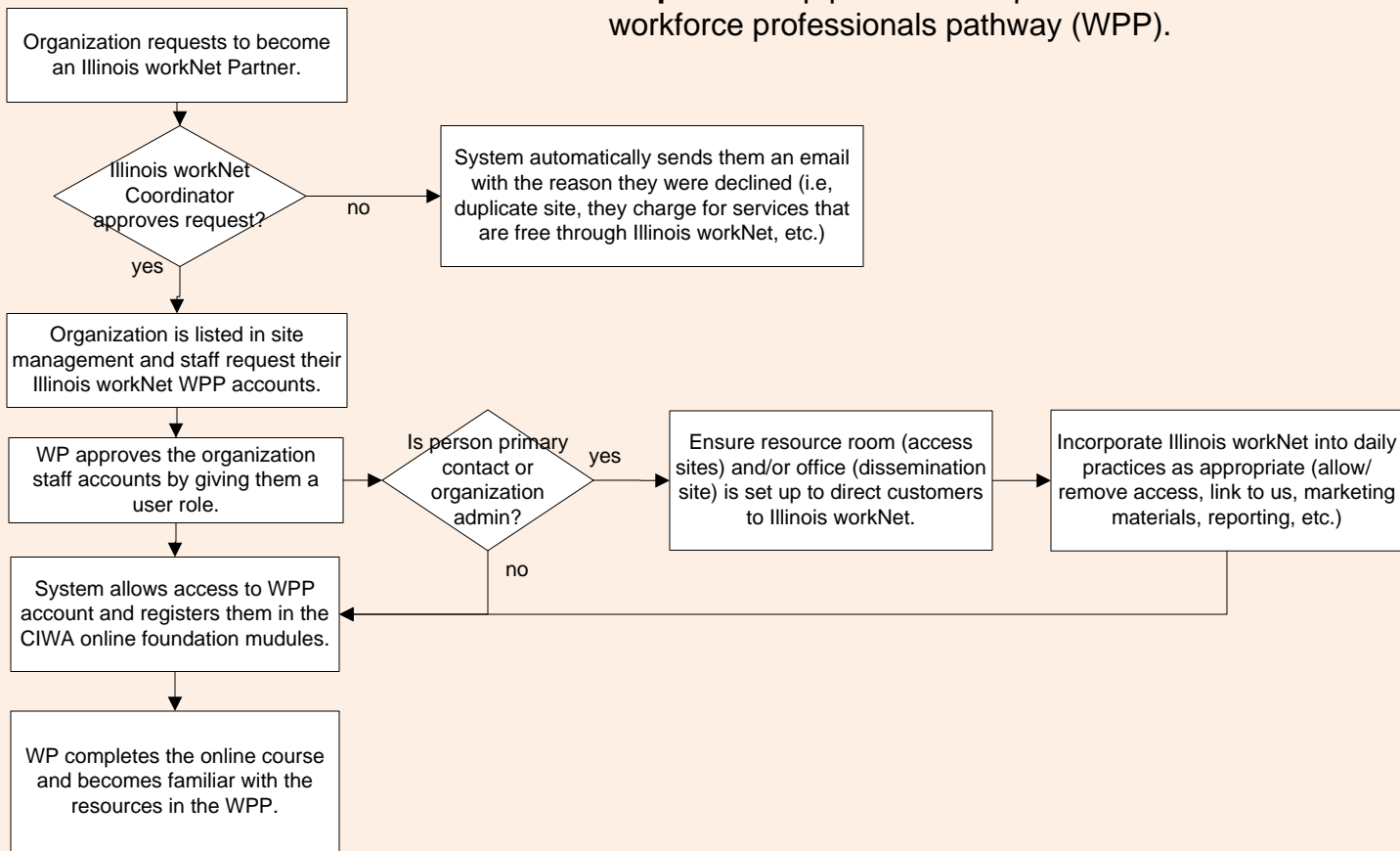
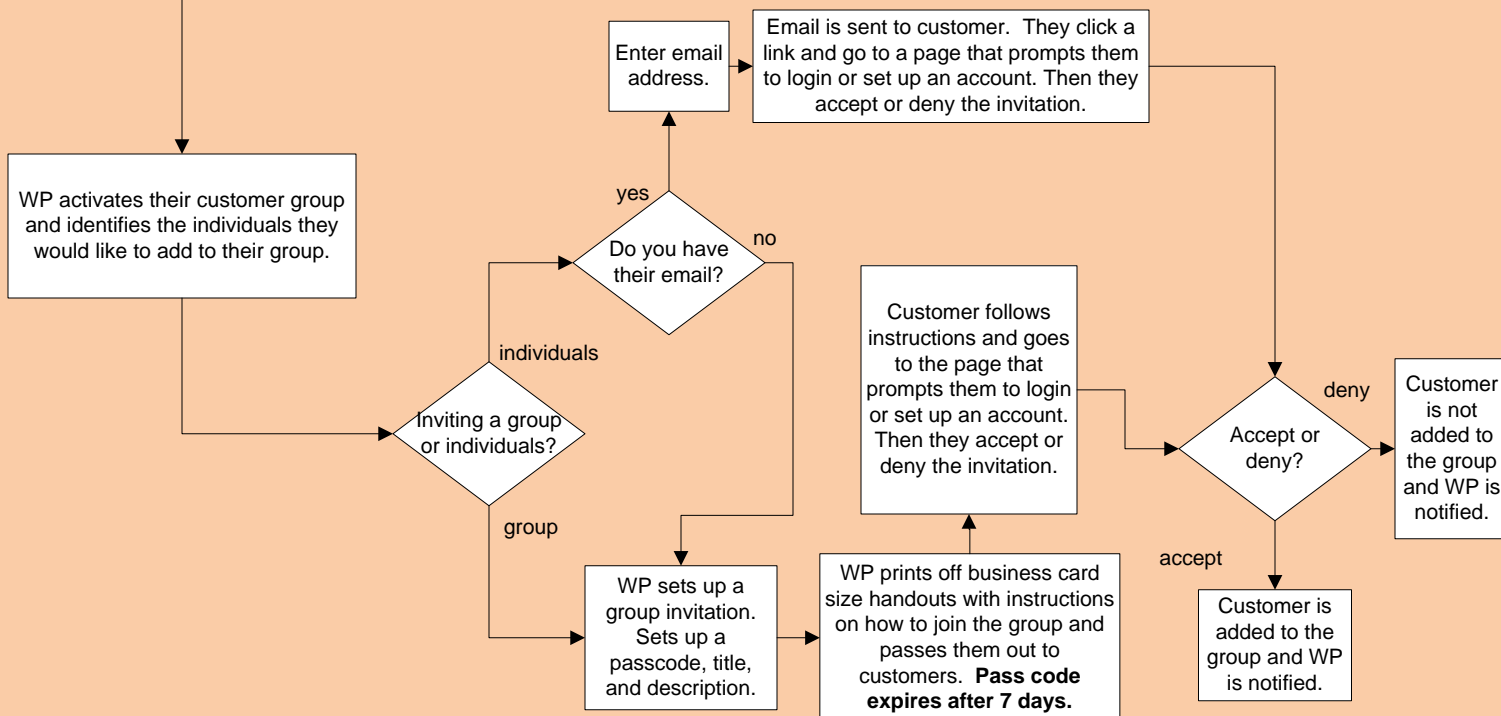


Step 1: Set up partners and provide access to Illinois workforce professionals pathway (WPP).



Step 2: Workforce Professional (WP) activates their personal customer group and invites customers to join.



Step 3: Use customer group tools, activities, and assessment to assist customers.

DRAFT/Sample Illinois workNet® Assessment General Workflow **Planned Future Enhancement

Customer attends orientation session with group. When they sign up for orientation, direct them to set up an account and follow the activities. If they express a concern about using a computer, direct them to the computer skills survey. Direct them to beginner computer skill resources and local content to find basic computer skill workshops/training.

